

27.04.2008 15:00 - 28.04.2008 15:00

(Ethernet, 100 mbps, Windows 2003)

	■	■	■	■	■	
[\Ngnom\temp\alex\] Write Rate file_operations_base (KBytes/sec)	>=2 105 85,9%	<2 105 13,7%	<1 329 0,28%	<909 0,14%	<656 0%	1435
[\Ngnom\temp\alex\] Read Rate file_operations_base (KBytes/sec)	>=2 703 0%	<2 703 0%	<2 105 99,2%	<1 515 0,63%	<976 0,21%	1435
[\Ngnom\temp\alex\] Availability (%) file_operations_base	>=100 100%	<100 0%	<100 0%	<100 0%	<100 0%	1435
	0%	→	0%	→	99,2%	→
					99,9%	

(2 )

ProLAN

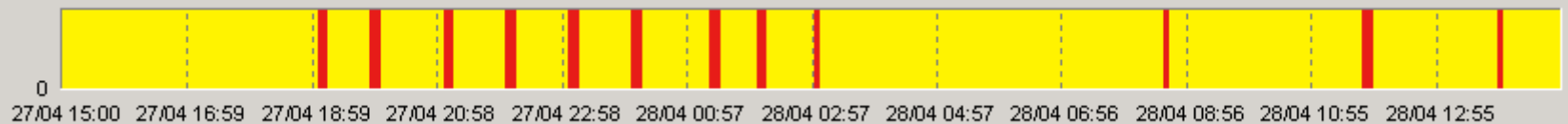
ProLAN.

PROLAN,

PROLAN  
PARTNER@PROLAN.RU

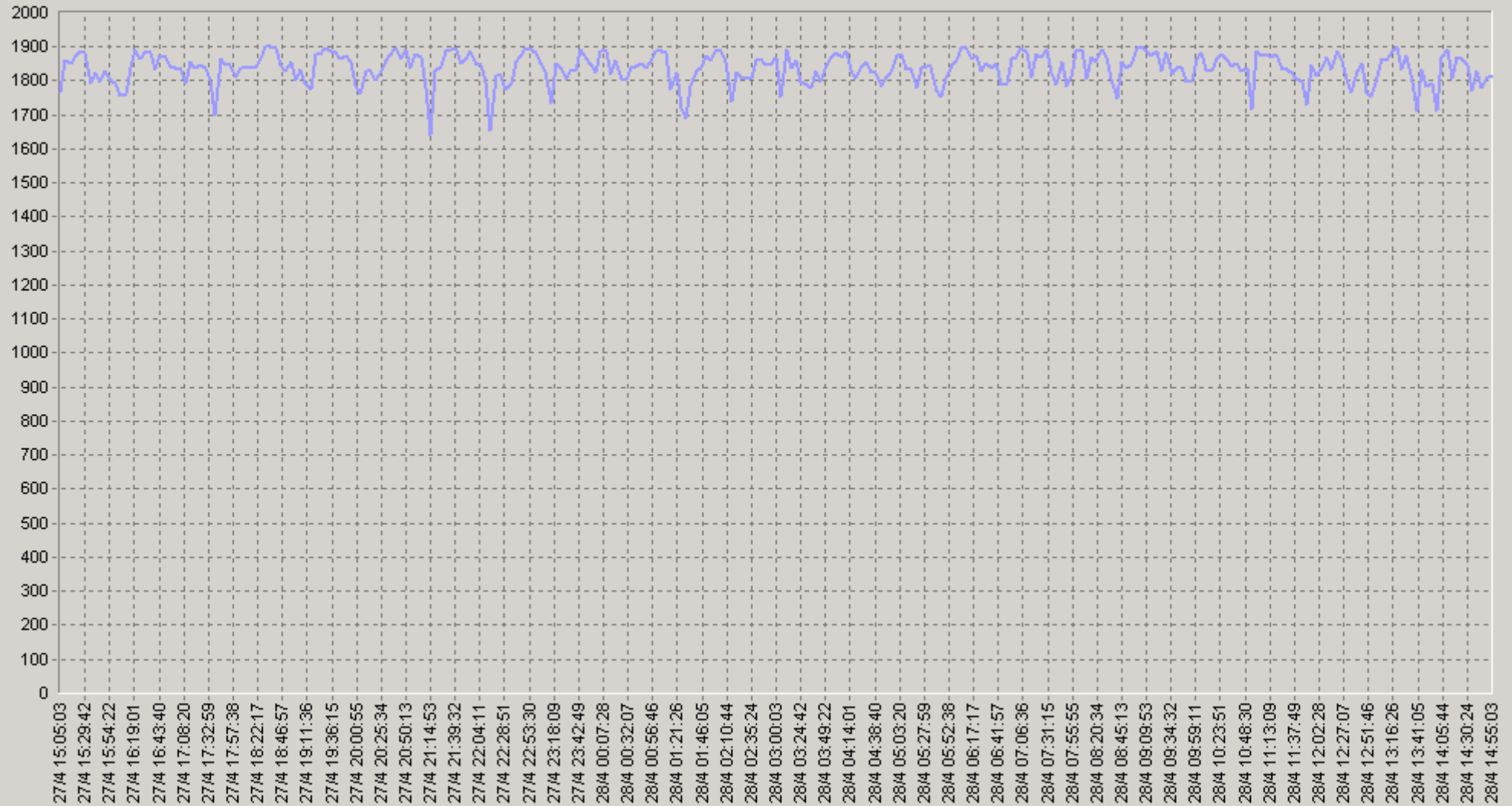
«

»



27.04.2008 15:00 - 28.04.2008 15:00

[\\gnom\temp\alex\] Read Rate file\_operations\_base (KBytes/sec)



— [\\gnom\temp\alex\] Read Rate file\_operations\_base (KBytes/sec)(SLA-ON-SERVER3)

27.04.2008 15:00 - 28.04.2008 15:00

## 20. [\\gnom\temp\alex\] Read Rate file\_operations\_base (KBytes/sec)

		75>	90>		75>	90>
00:00-00:20	1 856	1 859	1 753	06:00-06:20	1 876	1 812
00:20-00:40	1 821	1 800	1 701	06:20-06:40	1 847	1 732
00:40-01:00	1 853	1 792	1 781	06:40-07:00	1 829	1 750
01:00-01:20	1 851	1 859	1 724	07:00-07:20	1 863	1 802
01:20-01:40	1 753	1 702	1 681	07:20-07:40	1 857	1 795
01:40-02:00	1 860	1 820	1 789	07:40-08:00	1 823	1 699
02:00-02:20	1 844	1 878	1 862	08:00-08:20	1 855	1 768
02:20-02:40	1 809	1 754	1 656	08:20-08:40	1 835	1 770
02:40-03:00	1 858	1 871	1 767	08:40-09:00	1 854	1 739
03:00-03:20	1 838	1 871	1 791	09:00-09:20	1 890	1 883
03:20-03:40	1 794	1 783	1 650	09:20-09:40	1 848	1 770
03:40-04:00	1 847	1 838	1 778	09:40-10:00	1 819	1 701
04:00-04:20	1 866	1 867	1 791	10:00-10:20	1 857	1 795
04:20-04:40	1 833	1 810	1 715	10:20-10:40	1 857	1 808
04:40-05:00	1 817	1 786	1 715	10:40-11:00	1 816	1 754
05:00-05:20	1 848	1 825	1 726	11:00-11:20	1 876	1 859
05:20-05:40	1 821	1 776	1 665	11:20-11:40	1 837	1 750
05:40-06:00	1 808	1 747	1 698	11:40-12:00	1 792	1 717

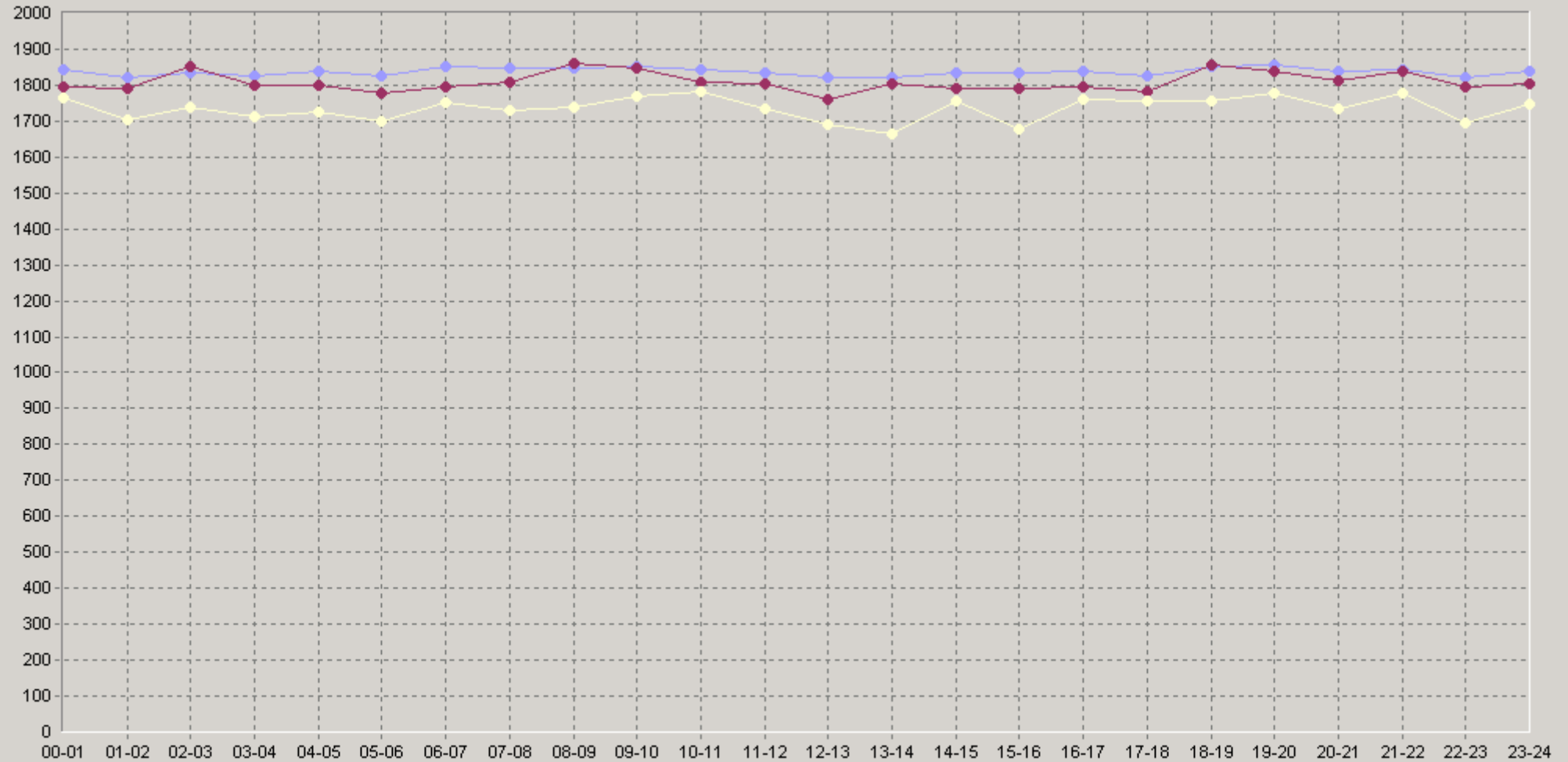
27.04.2008 15:00 - 28.04.2008 15:00

## 20. [\gnom\temp\alex\] Read Rate file\_operations\_base (KBytes/sec)

		75>	90>			75>	90>
12:00-12:20	1 850	1 805	1 773	18:00-18:20	1 840	1 843	1 779
12:20-12:40	1 828	1 750	1 708	18:20-18:40	1 879	1 890	1 828
12:40-13:00	1 792	1 726	1 617	18:40-19:00	1 843	1 833	1 736
13:00-13:20	1 869	1 855	1 803	19:00-19:20	1 812	1 778	1 753
13:20-13:40	1 833	1 838	1 637	19:20-19:40	1 886	1 889	1 854
13:40-14:00	1 758	1 672	1 599	19:40-20:00	1 867	1 883	1 787
14:00-14:20	1 860	1 859	1 781	20:00-20:20	1 803	1 781	1 627
14:20-14:40	1 835	1 783	1 768	20:20-20:40	1 846	1 792	1 764
14:40-15:00	1 810	1 792	1 616	20:40-21:00	1 871	1 889	1 813
15:00-15:20	1 832	1 792	1 685	21:00-21:20	1 788	1 781	1 754
15:20-15:40	1 860	1 873	1 821	21:20-21:40	1 870	1 874	1 784
15:40-16:00	1 811	1 778	1 645	21:40-22:00	1 869	1 876	1 784
16:00-16:20	1 793	1 768	1 682	22:00-22:20	1 776	1 795	1 696
16:20-16:40	1 875	1 880	1 828	22:20-22:40	1 805	1 761	1 653
16:40-17:00	1 854	1 828	1 784	22:40-23:00	1 888	1 892	1 883
17:00-17:20	1 838	1 787	1 757	23:00-23:20	1 819	1 825	1 735
17:20-17:40	1 811	1 807	1 681	23:20-23:40	1 833	1 792	1 748
17:40-18:00	1 826	1 773	1 759	23:40-00:00	1 860	1 835	1 768

27.04.2008 15:00 - 28.04.2008 15:00

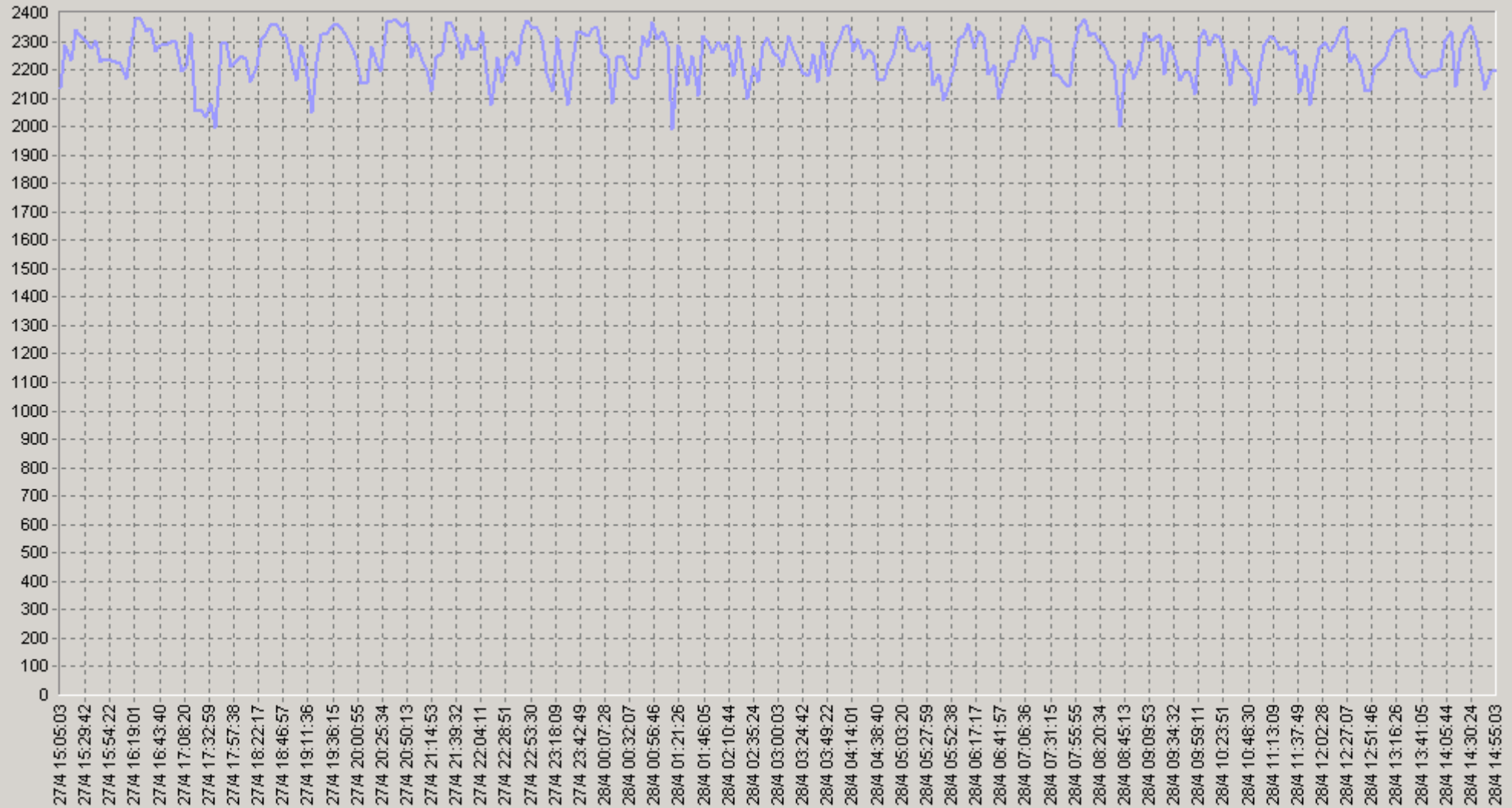
## 60 [\vgnom\temp\alex\] Read Rate file\_operations\_base (KBytes/sec)



◆ [BaseLine Avg] [\vgnom\temp\alex\] Read Rate file\_operations\_base (KBytes/sec)(60)(SLA-ON-SERVER3)  
 ● [BaseLine Percnt75 (>=)] [\vgnom\temp\alex\] Read Rate file\_operations\_base (KBytes/sec)(60)(SLA-ON-SERVER3)  
 ▲ [BaseLine Percnt90 (>=)] [\vgnom\temp\alex\] Read Rate file\_operations\_base (KBytes/sec)(60)(SLA-ON-SERVER3)

27.04.2008 15:00 - 28.04.2008 15:00

[\\ngnom\temp\alex\] Write Rate file\_operations\_base (KBytes/sec)



— [\\ngnom\temp\alex\] Write Rate file\_operations\_base (KBytes/sec)(SLA-ON-SERVER3)

27.04.2008 15:00 - 28.04.2008 15:00

## 20: [\gnom\temp\alex\] Write Rate file\_operations\_base (KBytes/sec)

		75>	90>		75>	90>	
00:00-00:20	2 217	2 210	2 075	06:00-06:20	2 323	2 315	2 301
00:20-00:40	2 198	2 188	1 857	06:20-06:40	2 234	2 174	2 020
00:40-01:00	2 310	2 278	2 220	06:40-07:00	2 206	2 165	2 043
01:00-01:20	2 224	2 255	2 157	07:00-07:20	2 307	2 273	2 230
01:20-01:40	2 209	2 121	1 970	07:20-07:40	2 273	2 217	2 049
01:40-02:00	2 272	2 232	2 169	07:40-08:00	2 193	2 094	1 963
02:00-02:20	2 260	2 294	2 172	08:00-08:20	2 339	2 326	2 294
02:20-02:40	2 182	2 116	2 081	08:20-08:40	2 203	2 165	2 060
02:40-03:00	2 271	2 225	2 186	08:40-09:00	2 192	2 130	2 064
03:00-03:20	2 261	2 255	2 146	09:00-09:20	2 304	2 278	2 205
03:20-03:40	2 194	2 081	2 014	09:20-09:40	2 242	2 107	2 068
03:40-04:00	2 246	2 200	2 125	09:40-10:00	2 183	2 105	2 039
04:00-04:20	2 323	2 307	2 283	10:00-10:20	2 322	2 309	2 270
04:20-04:40	2 238	2 195	2 103	10:20-10:40	2 223	2 198	2 068
04:40-05:00	2 230	2 181	2 114	10:40-11:00	2 168	2 081	2 024
05:00-05:20	2 305	2 281	2 181	11:00-11:20	2 302	2 262	2 203
05:20-05:40	2 236	2 198	1 969	11:20-11:40	2 249	2 198	2 151
05:40-06:00	2 173	2 101	2 026	11:40-12:00	2 172	2 132	1 942

27.04.2008 15:00 - 28.04.2008 15:00

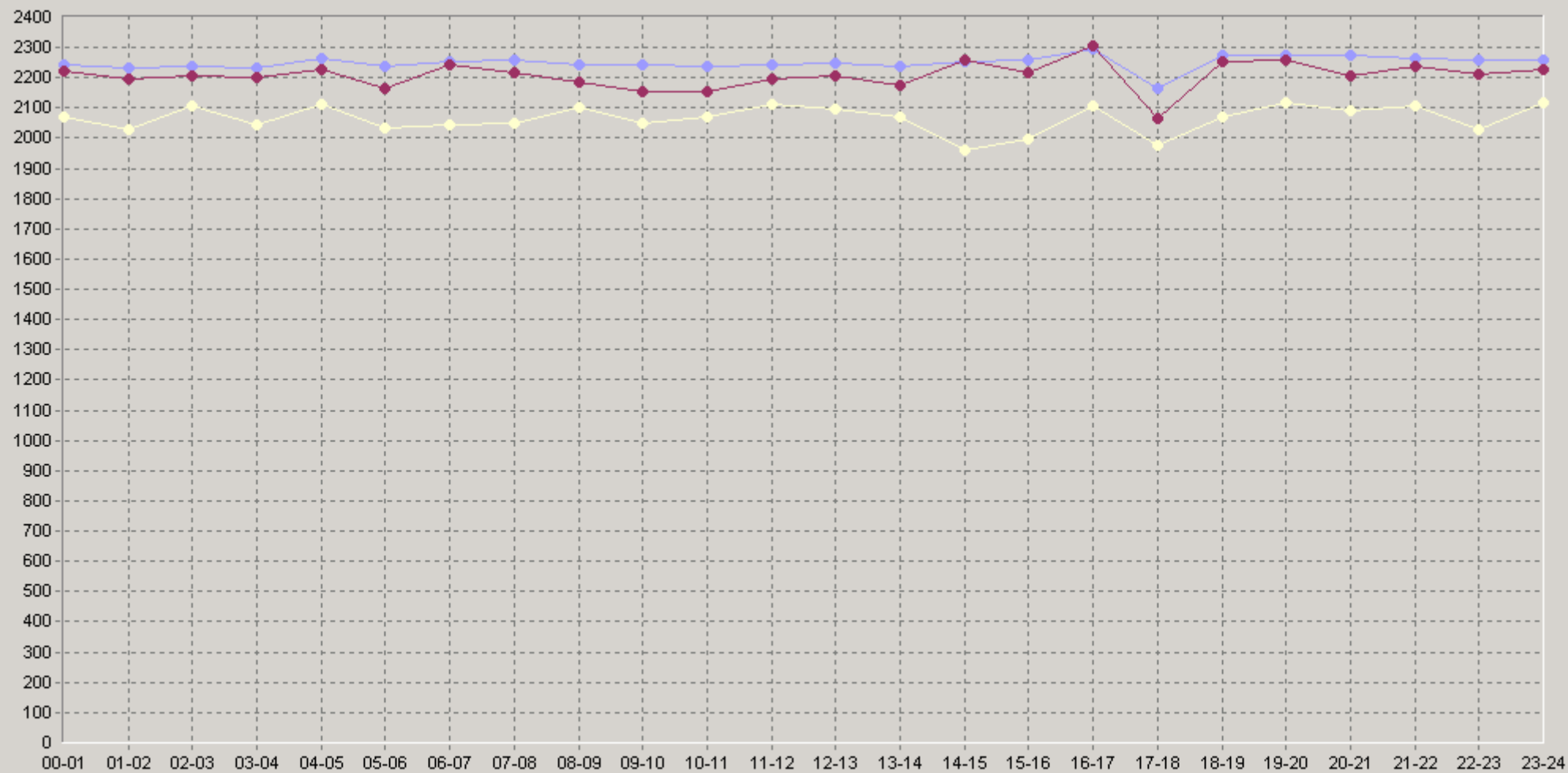
## 20: [\gnom\temp\alex\] Write Rate file\_operations\_base (KBytes/sec)

		75>	90>		75>	90>
12:00-12:20	2 290	2 268	2 157	18:00-18:20	2 221	1 990
12:20-12:40	2 290	2 268	2 200	18:20-18:40	2 316	2 247
12:40-13:00	2 169	2 099	1 821	18:40-19:00	2 286	2 162
13:00-13:20	2 278	2 230	2 198	19:00-19:20	2 182	1 932
13:20-13:40	2 269	2 188	2 077	19:20-19:40	2 326	2 260
13:40-14:00	2 174	2 116	2 030	19:40-20:00	2 320	2 240
14:00-14:20	2 268	2 275	2 257	20:00-20:20	2 204	2 045
14:20-14:40	2 313	2 286	2 252	20:20-20:40	2 301	2 165
14:40-15:00	2 177	2 053	1 890	20:40-21:00	2 323	2 181
15:00-15:20	2 238	2 107	1 990	21:00-21:20	2 213	2 107
15:20-15:40	2 308	2 281	2 235	21:20-21:40	2 315	2 225
15:40-16:00	2 226	2 172	1 984	21:40-22:00	2 271	2 101
16:00-16:20	2 247	2 257	2 103	22:00-22:20	2 213	2 018
16:20-16:40	2 363	2 347	2 323	22:20-22:40	2 226	2 020
16:40-17:00	2 284	2 278	2 107	22:40-23:00	2 336	2 217
17:00-17:20	2 258	2 240	2 103	23:00-23:20	2 235	2 121
17:20-17:40	2 025	2 006	1 795	23:20-23:40	2 208	1 940
17:40-18:00	2 218	2 203	2 049	23:40-00:00	2 337	2 247



27.04.2008 15:00 - 28.04.2008 15:00

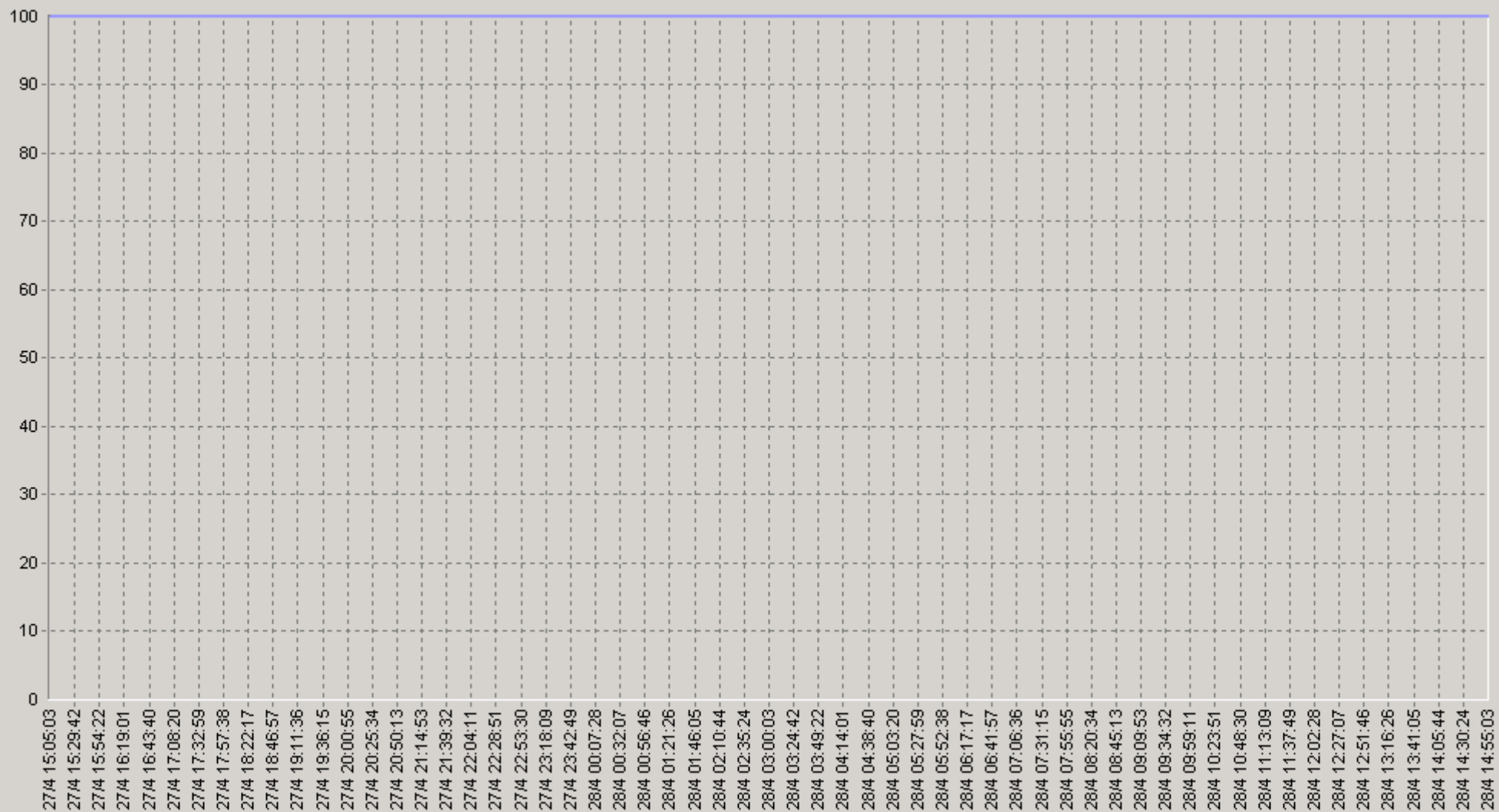
## 60. [\vgnom\temp\alex\] Write Rate file\_operations\_base (KBytes/sec)



◆ [BaseLine Avg] [\vgnom\temp\alex\] Write Rate file\_operations\_base (KBytes/sec)(60)(SLA-ON-SERVER3)  
 ● [BaseLine Percnt75 (>=)] [\vgnom\temp\alex\] Write Rate file\_operations\_base (KBytes/sec)(60)(SLA-ON-SERVER3)  
 ▲ [BaseLine Percnt90 (>=)] [\vgnom\temp\alex\] Write Rate file\_operations\_base (KBytes/sec)(60)(SLA-ON-SERVER3)

27.04.2008 15:00 - 28.04.2008 15:00

[\\ngnom\temp\alex\] Availability (%) file\_operations\_base



— [\\ngnom\temp\alex\] Availability (%) file\_operations\_base(SLA-ON-SERVER3)

27.04.2008 15:00 - 28.04.2008 15:00

## 20. [\gnom\temp\alex\] Availability (%) file\_operations\_base

		75>	90>			75>	90>
00:00-00:20	100	100	100	06:00-06:20	100	100	100
00:20-00:40	100	100	100	06:20-06:40	100	100	100
00:40-01:00	100	100	100	06:40-07:00	100	100	100
01:00-01:20	100	100	100	07:00-07:20	100	100	100
01:20-01:40	100	100	100	07:20-07:40	100	100	100
01:40-02:00	100	100	100	07:40-08:00	100	100	100
02:00-02:20	100	100	100	08:00-08:20	100	100	100
02:20-02:40	100	100	100	08:20-08:40	100	100	100
02:40-03:00	100	100	100	08:40-09:00	100	100	100
03:00-03:20	100	100	100	09:00-09:20	100	100	100
03:20-03:40	100	100	100	09:20-09:40	100	100	100
03:40-04:00	100	100	100	09:40-10:00	100	100	100
04:00-04:20	100	100	100	10:00-10:20	100	100	100
04:20-04:40	100	100	100	10:20-10:40	100	100	100
04:40-05:00	100	100	100	10:40-11:00	100	100	100
05:00-05:20	100	100	100	11:00-11:20	100	100	100
05:20-05:40	100	100	100	11:20-11:40	100	100	100
05:40-06:00	100	100	100	11:40-12:00	100	100	100

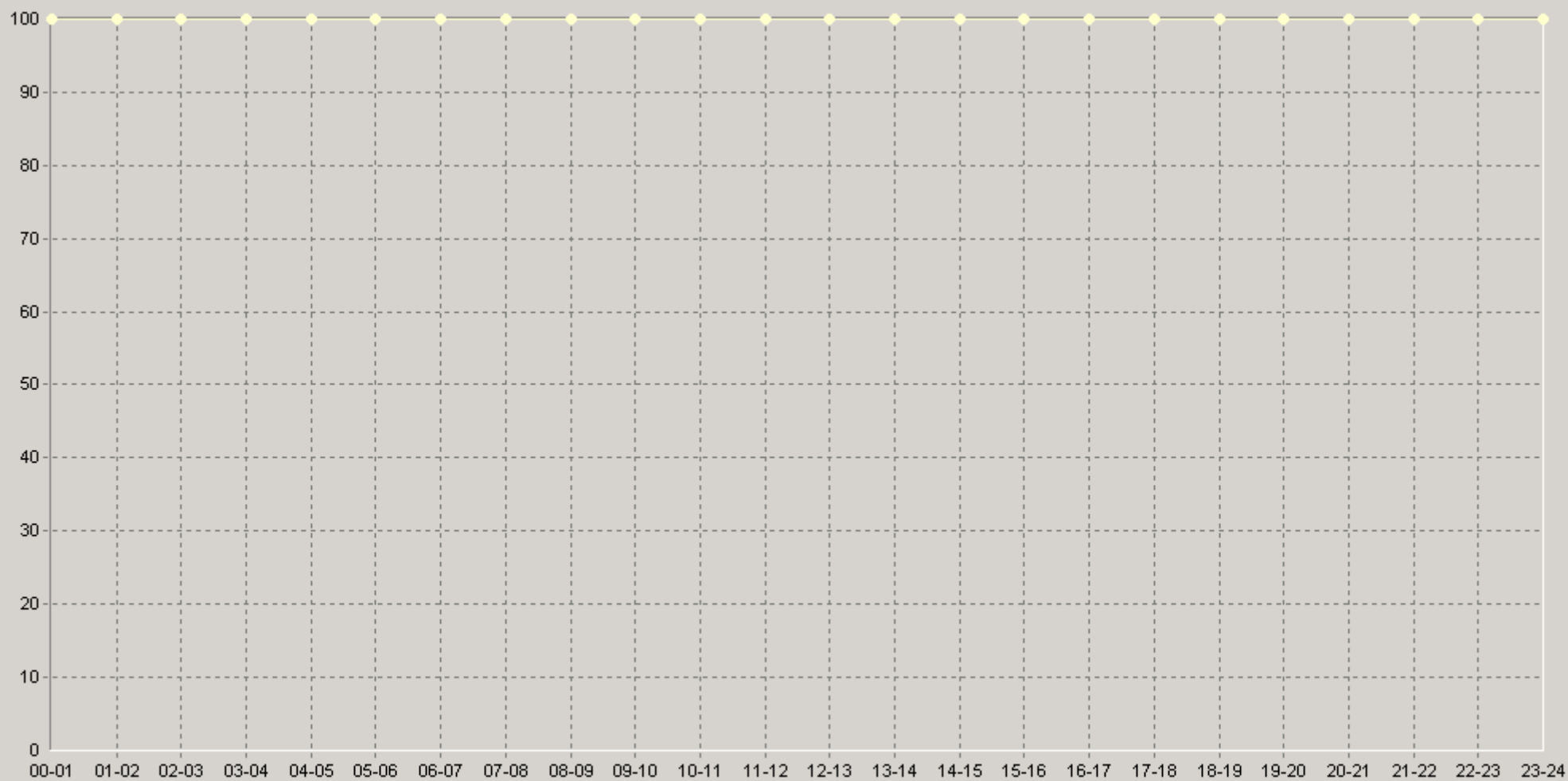
27.04.2008 15:00 - 28.04.2008 15:00

## 20. [\gnom\temp\alex] Availability (%) file\_operations\_base

		75>	90>			75>	90>
12:00-12:20	100	100	100	18:00-18:20	100	100	100
12:20-12:40	100	100	100	18:20-18:40	100	100	100
12:40-13:00	100	100	100	18:40-19:00	100	100	100
13:00-13:20	100	100	100	19:00-19:20	100	100	100
13:20-13:40	100	100	100	19:20-19:40	100	100	100
13:40-14:00	100	100	100	19:40-20:00	100	100	100
14:00-14:20	100	100	100	20:00-20:20	100	100	100
14:20-14:40	100	100	100	20:20-20:40	100	100	100
14:40-15:00	100	100	100	20:40-21:00	100	100	100
15:00-15:20	100	100	100	21:00-21:20	100	100	100
15:20-15:40	100	100	100	21:20-21:40	100	100	100
15:40-16:00	100	100	100	21:40-22:00	100	100	100
16:00-16:20	100	100	100	22:00-22:20	100	100	100
16:20-16:40	100	100	100	22:20-22:40	100	100	100
16:40-17:00	100	100	100	22:40-23:00	100	100	100
17:00-17:20	100	100	100	23:00-23:20	100	100	100
17:20-17:40	100	100	100	23:20-23:40	100	100	100
17:40-18:00	100	100	100	23:40-00:00	100	100	100

27.04.2008 15:00 - 28.04.2008 15:00

60 [\gnom\temp\alex\] Availability (%) file\_operations\_base



- ◆ [BaseLine Avg] [\gnom\temp\alex\] Availability (%) file\_operations\_base(60)(SLA-ON-SERVER3)
- ◆ [BaseLine Percnt75 (>)] [\gnom\temp\alex\] Availability (%) file\_operations\_base(60)(SLA-ON-SERVER3)
- ◆ [BaseLine Percnt90 (>)] [\gnom\temp\alex\] Availability (%) file\_operations\_base(60)(SLA-ON-SERVER3)