

25.04.2008 17:20 - 27.04.2008 13:20



	IP-	Cisco IP SLA	G.723			
	■	■	■	■	■	
[10.0.3.252->62.61.7.2] G.723 Delay (usec)	<=100 000 84,7%	>100 000 14,8%	>225 000 0,15%	>280 000 0,19%	>360 000 0,15%	2635
[10.0.3.252->62.61.7.2] G.723 PacketLoss (%)	<=1 49,7%	>1 10,1%	>2 7,47%	>3 9,9%	>5 22,9%	2636
[10.0.3.252->62.61.7.2] G.723 Jitter (usec)	<=45 000 18,5%	>45 000 31,2%	>55 000 40,6%	>80 000 5,99%	>100 000 3,76%	2636
[10.0.3.252->62.61.7.2] G.723 SAA NumRTT's	>=95 4,06%	<95 12,5%	<85 15,9%	<70 21,4%	<50 46,3%	2637
	IP- ()	0,11% →	1,67% →	9,22% →	32%	2637

(2)

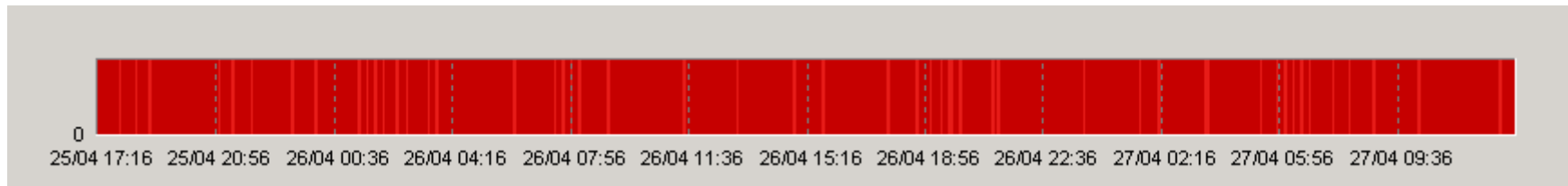
ProLAN

ProLAN.

PROLAN,

PROLAN
PARTNER@PROLAN.RU

« »





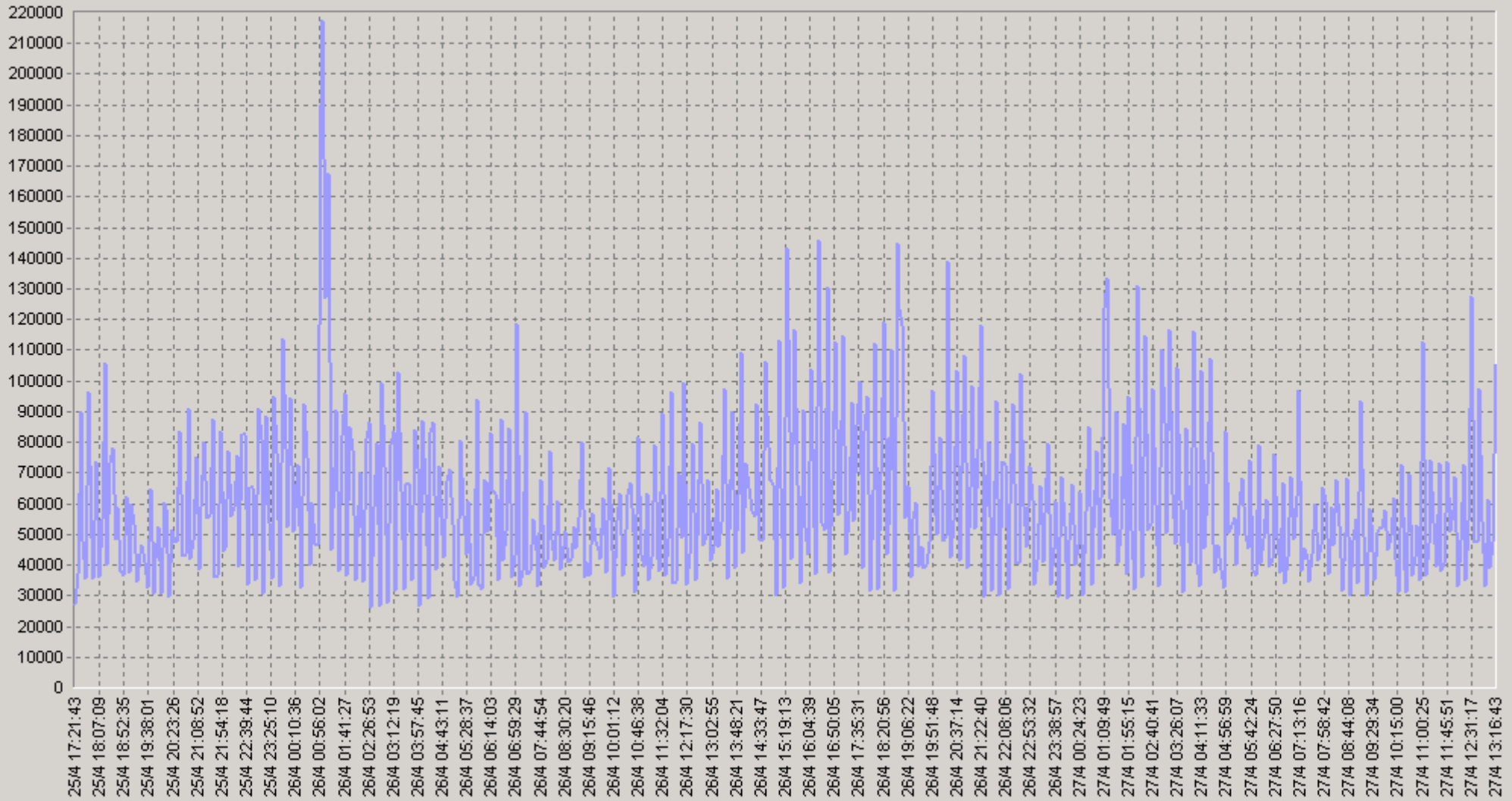
IP-

Cisco IP SLA

G.723

25.04.2008 17:20 - 27.04.2008 13:20

[10.0.3.252->62.61.7.2] G.723 Delay (usec)



[10.0.3.252->62.61.7.2] G.723 Delay (usec)(SLA-ON-SERVER3)

25.04.2008 17:20 - 27.04.2008 13:20

20 [10.0.3.252->62.61.7.2] G.723 Delay (usec)

		75<	90<			75<	90<
00:00-00:20	58 101	78 333	99 302	06:00-06:20	55 797	57 881	100 573
00:20-00:40	55 516	74 817	99 172	06:20-06:40	54 272	58 514	107 464
00:40-01:00	80 762	96 158	145 843	06:40-07:00	53 022	69 200	85 865
01:00-01:20	112 571	154 594	225 286	07:00-07:20	66 610	88 386	117 111
01:20-01:40	64 625	98 111	104 888	07:20-07:40	42 032	48 508	64 284
01:40-02:00	69 764	86 814	134 593	07:40-08:00	49 457	64 345	76 265
02:00-02:20	56 390	64 338	87 637	08:00-08:20	55 353	72 486	98 037
02:20-02:40	64 860	94 253	111 508	08:20-08:40	45 498	49 482	78 575
02:40-03:00	71 310	106 701	130 857	08:40-09:00	49 220	65 955	85 086
03:00-03:20	66 821	89 800	105 464	09:00-09:20	50 177	56 274	87 127
03:20-03:40	64 226	83 633	108 059	09:20-09:40	49 548	62 152	93 400
03:40-04:00	68 739	97 663	111 949	09:40-10:00	53 919	69 325	85 925
04:00-04:20	53 181	73 101	108 067	10:00-10:20	46 230	56 882	88 099
04:20-04:40	67 190	90 021	126 929	10:20-10:40	54 386	63 722	92 025
04:40-05:00	54 538	72 622	93 482	10:40-11:00	45 967	50 944	82 814
05:00-05:20	48 992	55 149	97 011	11:00-11:20	60 465	75 302	112 254
05:20-05:40	52 608	58 622	103 895	11:20-11:40	51 640	60 557	73 854
05:40-06:00	53 967	56 057	118 580	11:40-12:00	54 762	67 808	97 871

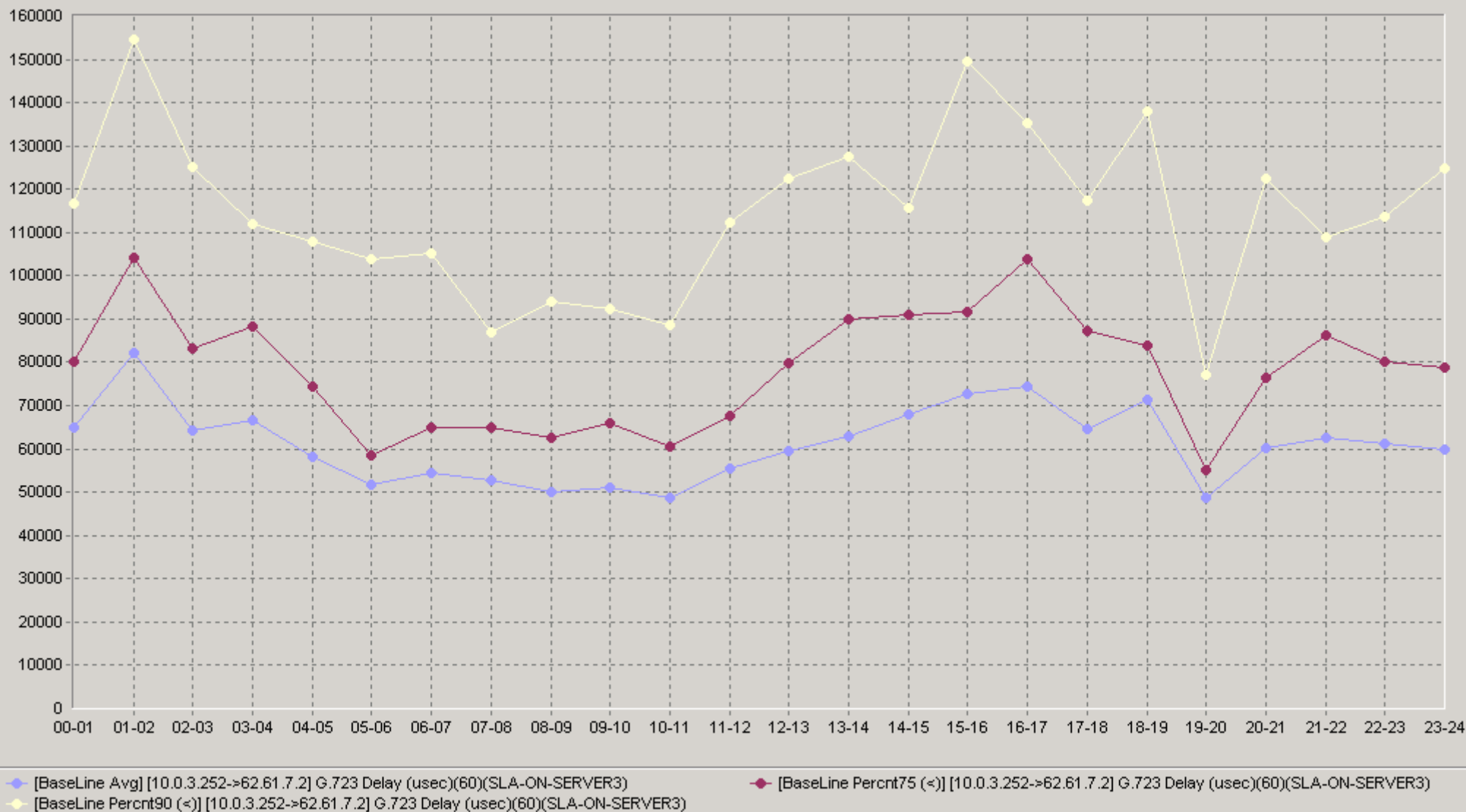
25.04.2008 17:20 - 27.04.2008 13:20

20 [10.0.3.252->62.61.7.2] G.723 Delay (usec)

		75<	90<			75<	90<
12:00-12:20	58 638	70 011	114 500	18:00-18:20	68 659	89 563	112 637
12:20-12:40	58 866	79 410	120 847	18:20-18:40	69 885	83 510	157 985
12:40-13:00	60 949	86 833	122 530	18:40-19:00	76 075	75 897	130 831
13:00-13:20	56 395	67 586	101 065	19:00-19:20	48 494	50 841	65 391
13:20-13:40	63 818	91 290	125 943	19:20-19:40	44 053	50 365	76 284
13:40-14:00	75 121	114 000	132 318	19:40-20:00	53 102	59 810	82 051
14:00-14:20	60 165	81 323	104 543	20:00-20:20	51 682	60 000	97 984
14:20-14:40	61 181	73 698	105 353	20:20-20:40	71 506	90 773	122 371
14:40-15:00	82 333	113 866	139 289	20:40-21:00	57 515	71 474	127 767
15:00-15:20	60 459	83 462	125 956	21:00-21:20	65 668	84 529	105 268
15:20-15:40	96 518	149 275	173 311	21:20-21:40	69 407	90 871	108 711
15:40-16:00	60 788	81 212	91 631	21:40-22:00	52 622	68 579	108 906
16:00-16:20	59 394	81 312	106 400	22:00-22:20	60 643	85 074	108 500
16:20-16:40	95 403	135 459	174 713	22:20-22:40	68 539	85 074	131 924
16:40-17:00	68 503	103 989	132 826	22:40-23:00	54 849	60 789	104 380
17:00-17:20	69 291	81 836	103 404	23:00-23:20	60 428	81 723	128 717
17:20-17:40	67 852	95 082	120 100	23:20-23:40	58 121	72 227	109 505
17:40-18:00	58 867	86 306	109 095	23:40-00:00	61 046	78 654	128 344

25.04.2008 17:20 - 27.04.2008 13:20

60 [10.0.3.252->62.61.7.2] G.723 Delay (usec)





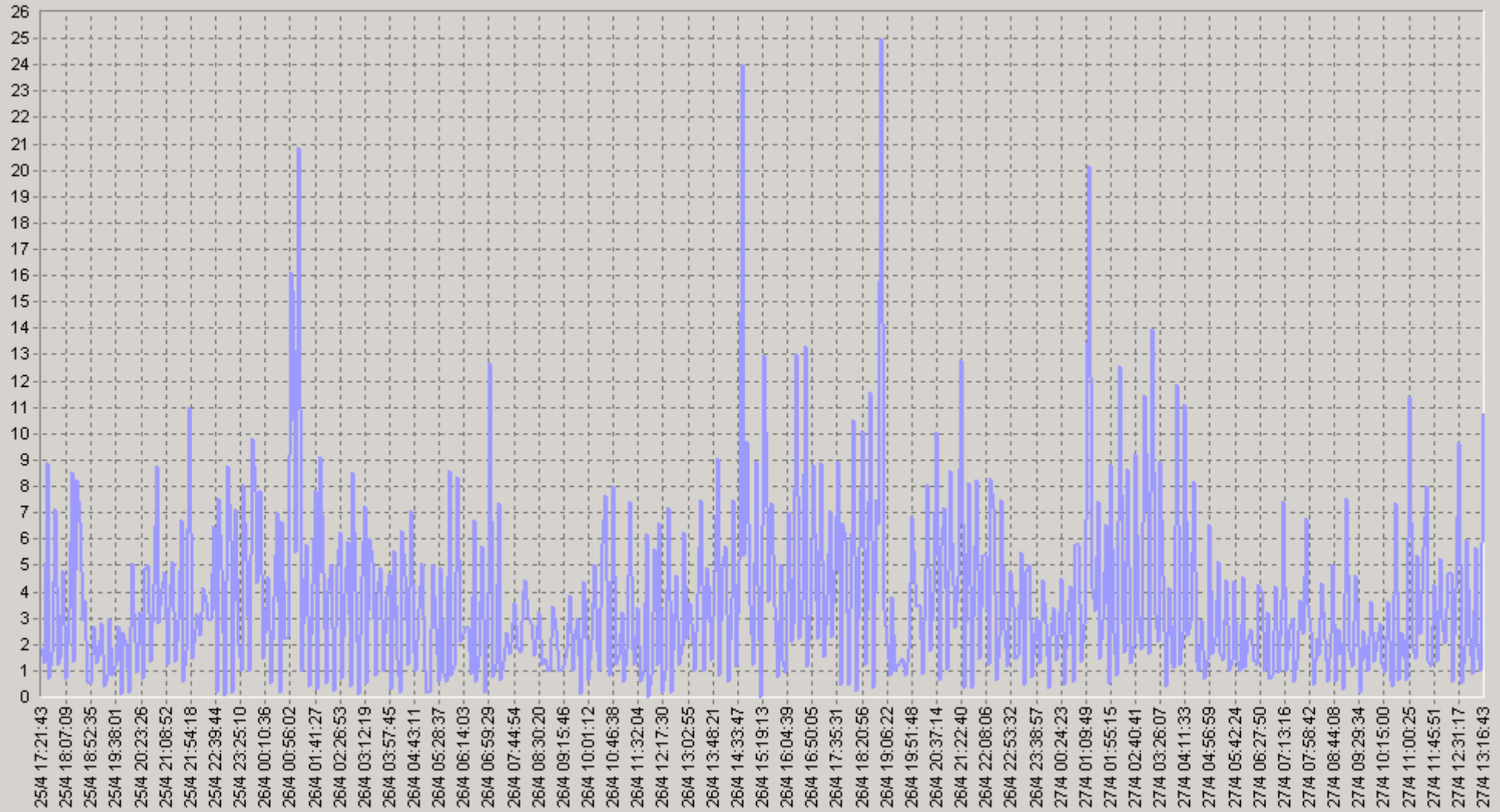
IP-

Cisco IP SLA

G.723

25.04.2008 17:20 - 27.04.2008 13:20

[10.0.3.252->62.61.7.2] G.723 Packet Loss (%)



[10.0.3.252->62.61.7.2] G.723 Packet Loss (%) (SLA-ON-SERVER3)

25.04.2008 17:20 - 27.04.2008 13:20

20 [10.0.3.252->62.61.7.2] G.723 Packet Loss (%)

		75<	90<			75<	90<
00:00-00:20	2,95	4	8	06:00-06:20	2,8	3	8
00:20-00:40	2,9	4	8	06:20-06:40	2,7	2	9
00:40-01:00	6,13	7	14	06:40-07:00	2,48	3	8
01:00-01:20	8,8	12	32	07:00-07:20	4,48	7	12
01:20-01:40	4	7	10	07:20-07:40	1,68	3	4
01:40-02:00	4,8	8	13	07:40-08:00	3,13	4	8
02:00-02:20	3,5	5	9	08:00-08:20	2,82	3	8
02:20-02:40	3,9	5	10	08:20-08:40	2,1	3	5
02:40-03:00	5,43	9	14	08:40-09:00	2,05	3	5
03:00-03:20	4,75	7	11	09:00-09:20	2,1	2	6
03:20-03:40	3,97	6	10	09:20-09:40	2,45	4	8
03:40-04:00	4,13	6	11	09:40-10:00	2,33	5	6
04:00-04:20	3,05	4	10	10:00-10:20	2,15	3	5
04:20-04:40	4,08	6	10	10:20-10:40	3,43	4	10
04:40-05:00	2,88	3	10	10:40-11:00	2,25	3	6
05:00-05:20	2,05	2	6	11:00-11:20	4,05	5	11
05:20-05:40	2,2	3	5	11:20-11:40	3,13	4	6
05:40-06:00	2,85	3	10	11:40-12:00	2,48	3	7

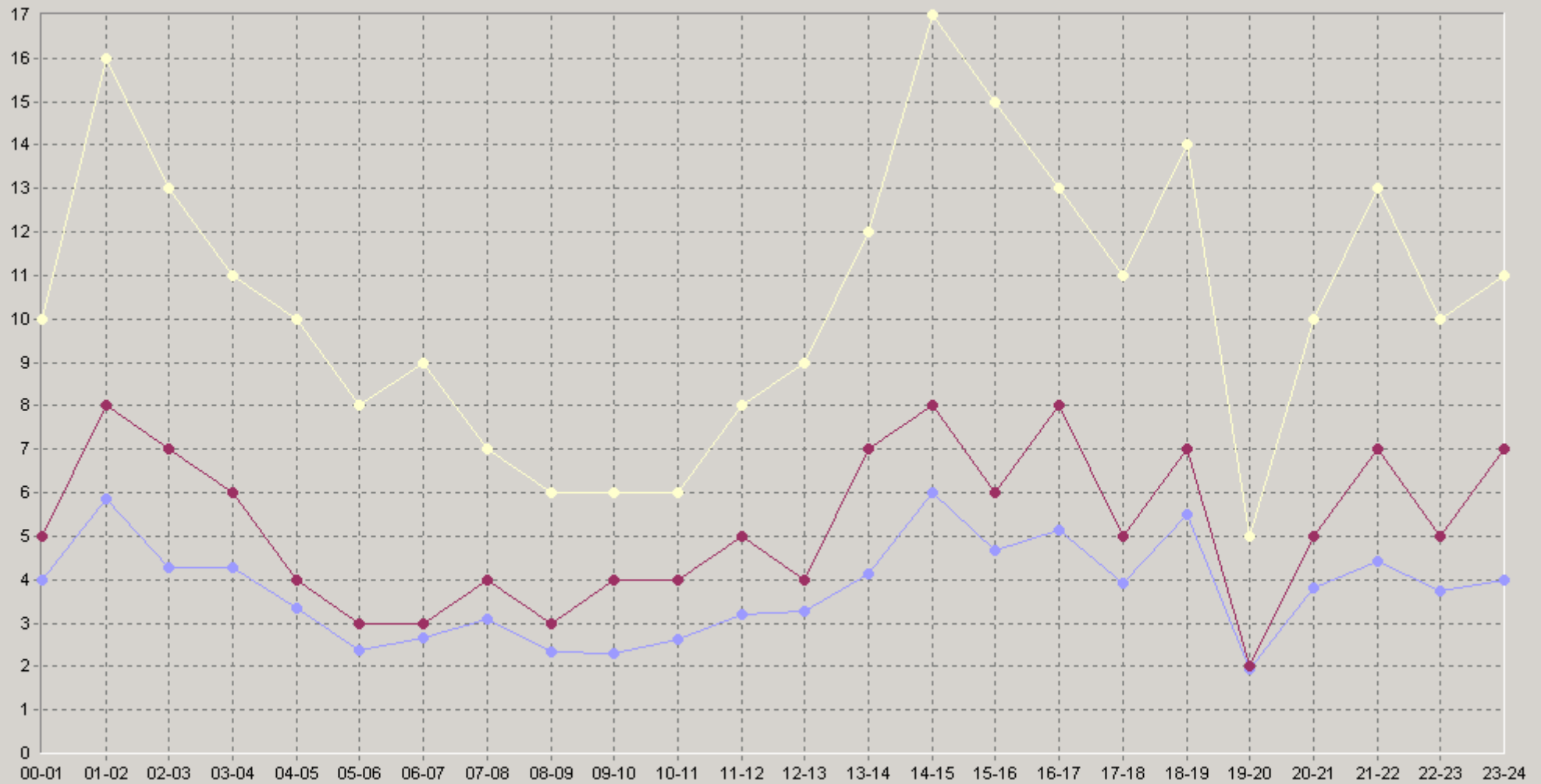
25.04.2008 17:20 - 27.04.2008 13:20

20. [10.0.3.252->62.61.7.2] G.723 Packet Loss (%)

		75<	90<			75<	90<
12:00-12:20	3,45	4	9	18:00-18:20	4,98	8	11
12:20-12:40	3,15	2	8	18:20-18:40	5,63	6	16
12:40-13:00	3,2	4	8	18:40-19:00	5,87	7	12
13:00-13:20	3,65	6	8	19:00-19:20	1,93	3	6
13:20-13:40	4,35	6	12	19:20-19:40	1,45	2	4
13:40-14:00	4,85	8	12	19:40-20:00	2,5	3	7
14:00-14:20	3	3	10	20:00-20:20	2,85	4	9
14:20-14:40	4,4	5	8	20:20-20:40	4,68	5	8
14:40-15:00	10,7	17	26	20:40-21:00	3,93	6	12
15:00-15:20	3,6	4	15	21:00-21:20	4,53	6	10
15:20-15:40	7,8	12	16	21:20-21:40	4,9	7	14
15:40-16:00	2,65	2	6	21:40-22:00	3,85	5	12
16:00-16:20	3,2	6	7	22:00-22:20	4,03	6	9
16:20-16:40	8,1	12	20	22:20-22:40	4,13	5	11
16:40-17:00	4,15	8	11	22:40-23:00	3,08	5	8
17:00-17:20	4,15	6	8	23:00-23:20	3,98	7	10
17:20-17:40	4,51	7	12	23:20-23:40	3,58	5	11
17:40-18:00	3,25	4	10	23:40-00:00	4,38	7	13

25.04.2008 17:20 - 27.04.2008 13:20

60 [10.0.3.252->62.61.7.2] G.723 Packet Loss (%)



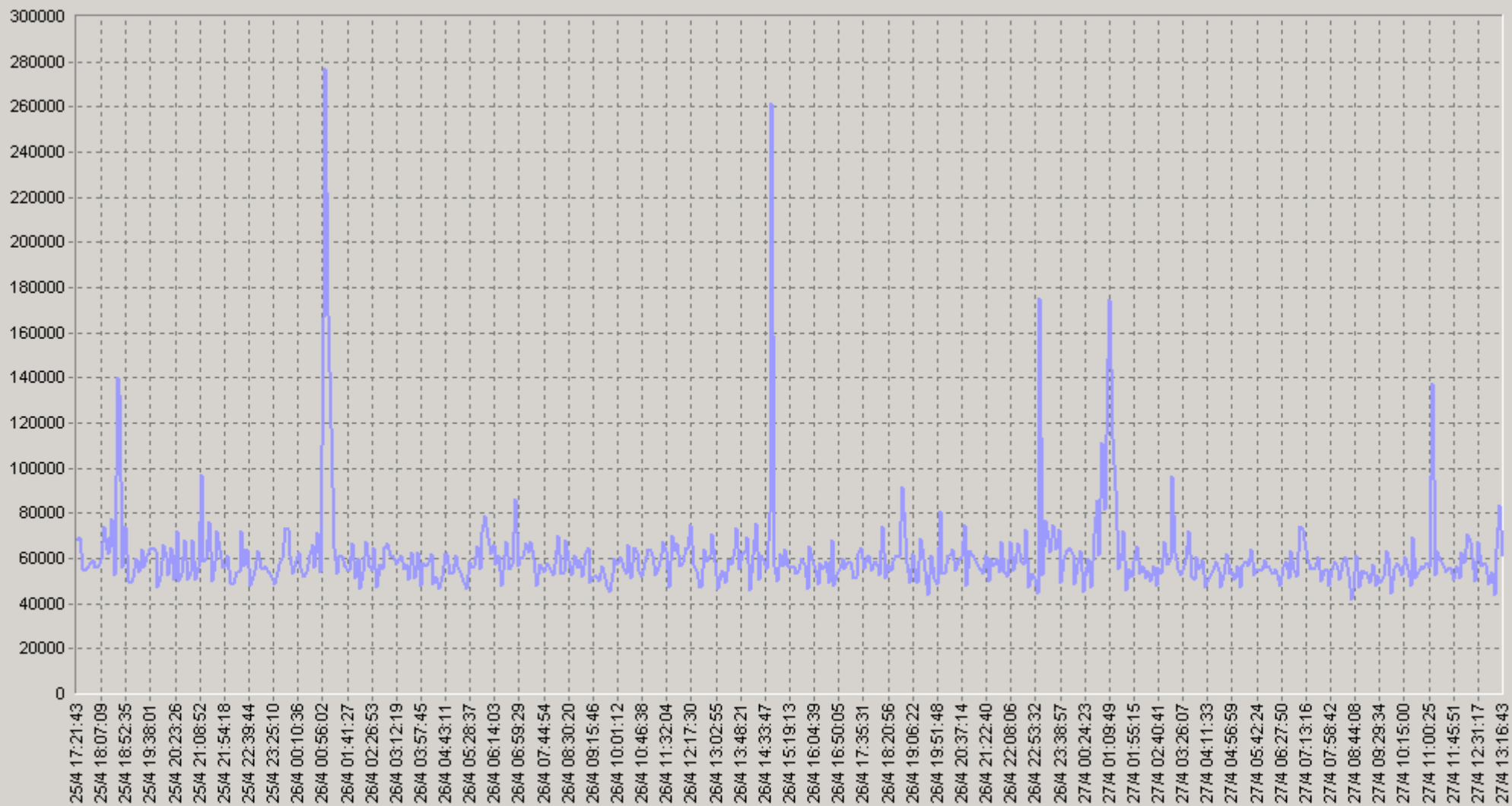
◆ [BaseLine Avg] [10.0.3.252->62.61.7.2] G.723 Packet Loss (%) (60) (SLA-ON-SERVER3)

◆ [BaseLine Percnt75 (<=)] [10.0.3.252->62.61.7.2] G.723 Packet Loss (%) (60) (SLA-ON-SERVER3)

◆ [BaseLine Percnt90 (<=)] [10.0.3.252->62.61.7.2] G.723 Packet Loss (%) (60) (SLA-ON-SERVER3)

25.04.2008 17:20 - 27.04.2008 13:20

[10.0.3.252->62.61.7.2] G.723 Jitter (usec)



— [10.0.3.252->62.61.7.2] G.723 Jitter (usec)(SLA-ON-SERVER3)

25.04.2008 17:20 - 27.04.2008 13:20

20 [10.0.3.252->62.61.7.2] G.723 Jitter (usec)

		75<	90<			75<	90<
00:00-00:20	57 833	63 111	69 900	06:00-06:20	59 137	60 792	86 636
00:20-00:40	54 925	64 556	67 929	06:20-06:40	56 420	65 909	73 560
00:40-01:00	91 924	93 417	145 190	06:40-07:00	59 833	63 913	76 000
01:00-01:20	136 231	183 167	256 333	07:00-07:20	65 520	67 056	80 909
01:20-01:40	63 689	72 545	79 818	07:20-07:40	57 610	63 300	73 600
01:40-02:00	54 270	60 929	72 333	07:40-08:00	53 688	57 632	63 400
02:00-02:20	57 097	63 455	68 643	08:00-08:20	56 996	58 125	87 053
02:20-02:40	54 073	59 217	67 040	08:20-08:40	55 431	59 690	74 111
02:40-03:00	59 846	66 333	72 909	08:40-09:00	54 863	62 800	73 286
03:00-03:20	64 175	68 471	80 889	09:00-09:20	55 527	66 727	77 417
03:20-03:40	57 493	62 909	67 964	09:20-09:40	51 850	58 267	66 471
03:40-04:00	55 421	63 938	78 360	09:40-10:00	53 150	58 353	72 714
04:00-04:20	55 513	63 692	71 500	10:00-10:20	56 667	64 059	74 733
04:20-04:40	51 801	55 944	70 200	10:20-10:40	58 847	65 800	73 385
04:40-05:00	56 180	60 813	71 778	10:40-11:00	56 373	61 333	76 750
05:00-05:20	54 282	59 750	68 000	11:00-11:20	67 687	60 720	84 136
05:20-05:40	55 927	63 000	73 500	11:20-11:40	58 768	66 875	76 154
05:40-06:00	62 008	69 450	77 533	11:40-12:00	58 453	65 778	76 750

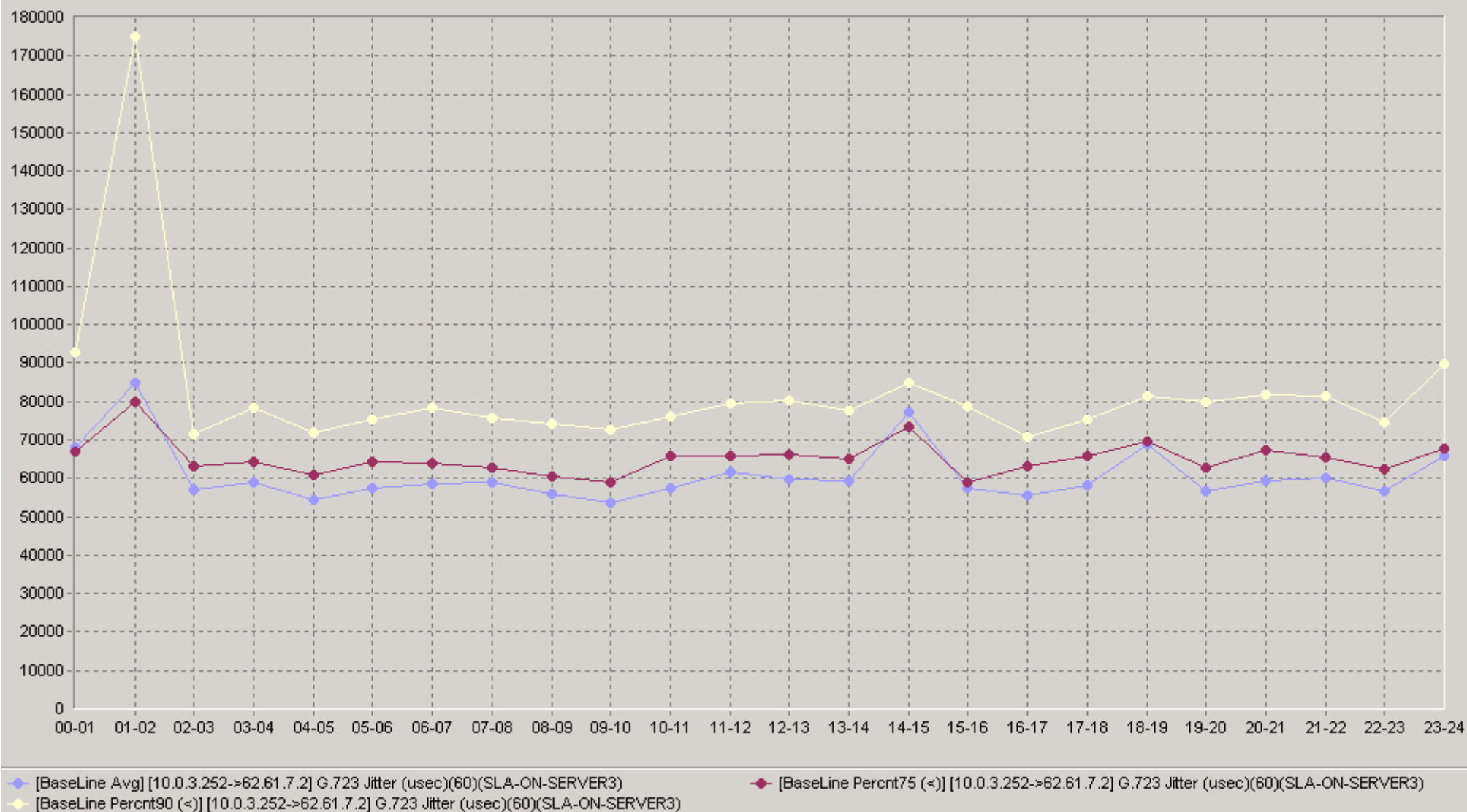
25.04.2008 17:20 - 27.04.2008 13:20

20 [10.0.3.252->62.61.7.2] G.723 Jitter (usec)

		75<	90<			75<	90<
12:00-12:20	65 620	67 158	87 769	18:00-18:20	60 823	69 800	85 571
12:20-12:40	54 906	62 529	66 417	18:20-18:40	80 598	70 143	80 100
12:40-13:00	58 743	69 250	80 125	18:40-19:00	64 786	62 611	78 667
13:00-13:20	58 435	64 231	75 188	19:00-19:20	53 350	60 000	69 125
13:20-13:40	57 457	61 031	69 773	19:20-19:40	57 808	64 391	80 267
13:40-14:00	63 540	74 700	83 263	19:40-20:00	59 064	63 714	77 167
14:00-14:20	63 135	75 333	81 500	20:00-20:20	58 492	70 167	74 154
14:20-14:40	56 441	60 118	70 533	20:20-20:40	58 340	62 429	80 840
14:40-15:00	112 002	83 500	123 462	20:40-21:00	60 997	65 750	88 900
15:00-15:20	59 863	67 385	82 043	21:00-21:20	60 763	65 000	73 136
15:20-15:40	54 936	57 455	66 200	21:20-21:40	59 340	64 217	78 357
15:40-16:00	57 448	58 267	84 500	21:40-22:00	60 800	67 714	83 100
16:00-16:20	55 044	57 167	72 727	22:00-22:20	55 036	58 800	71 318
16:20-16:40	57 920	59 214	73 542	22:20-22:40	62 805	68 632	81 560
16:40-17:00	54 209	63 160	65 000	22:40-23:00	51 793	56 857	67 154
17:00-17:20	55 669	63 889	72 467	23:00-23:20	74 235	65 484	103 333
17:20-17:40	59 894	64 273	72 250	23:20-23:40	60 991	69 000	87 000
17:40-18:00	58 014	69 250	75 400	23:40-00:00	62 071	71 375	85 667

25.04.2008 17:20 - 27.04.2008 13:20

60 [10.0.3.252->62.61.7.2] G.723 Jitter (usec)





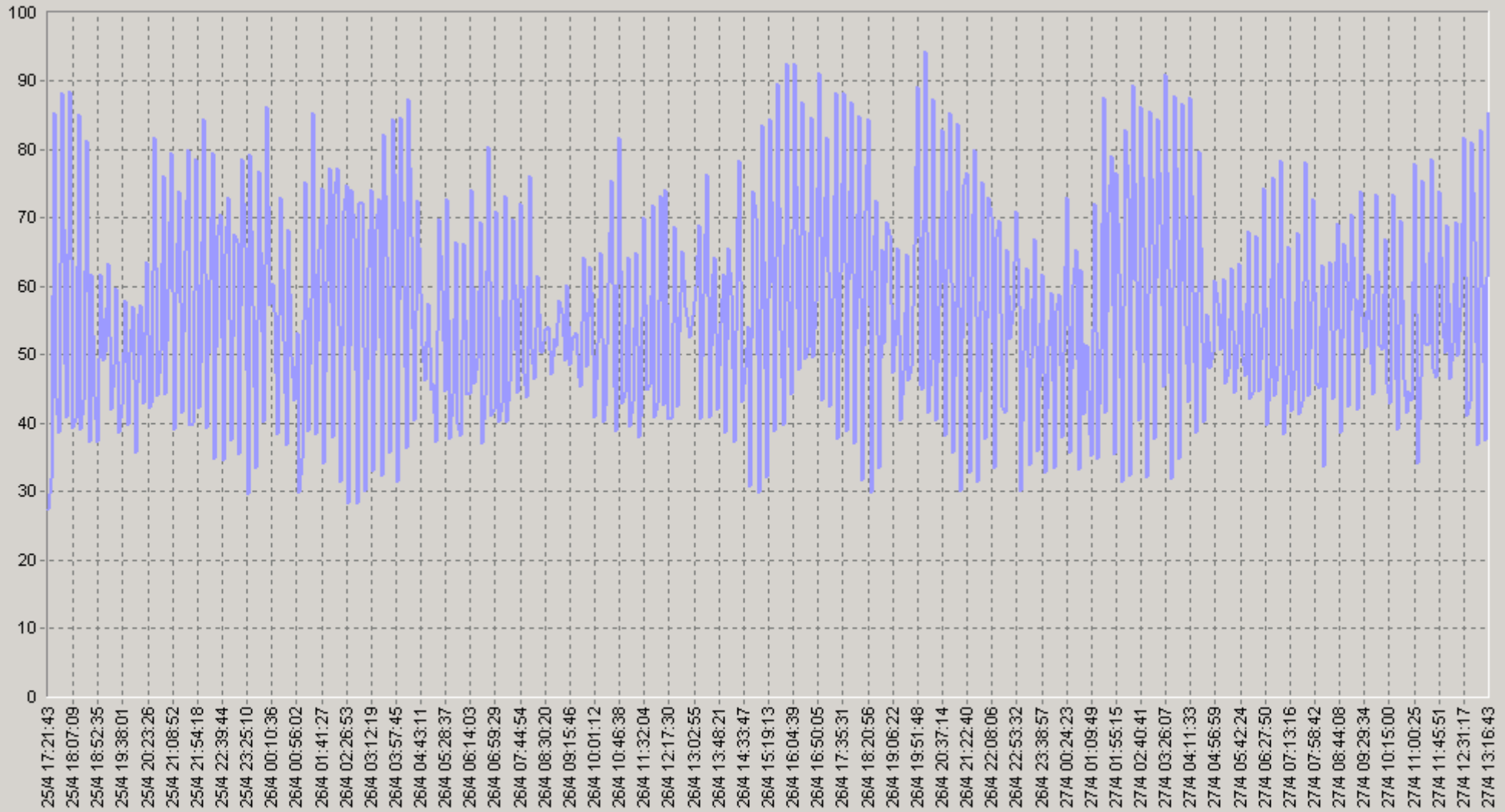
IP-

Cisco IP SLA

G.723

25.04.2008 17:20 - 27.04.2008 13:20

[10.0.3.252->62.61.7.2] G.723 SAA NumRTT's



[10.0.3.252->62.61.7.2] G.723 SAA NumRTT's(SLA-ON-SERVER3)

25.04.2008 17:20 - 27.04.2008 13:20

20 [10.0.3.252->62.61.7.2] G.723 SAA NumRTT's

		75>	90>			75>	90>
00:00-00:20	55,4	36	26	06:00-06:20	53,7	38	32
00:20-00:40	54,5	37	31	06:20-06:40	52,2	37	32
00:40-01:00	52	32	29	06:40-07:00	56,6	42	32
01:00-01:20	47,3	27	22	07:00-07:20	52,6	37	30
01:20-01:40	58,3	32	28	07:20-07:40	50,8	39	28
01:40-02:00	63,7	49	27	07:40-08:00	57,2	37	33
02:00-02:20	58,1	35	28	08:00-08:20	53,4	39	29
02:20-02:40	59,9	32	24	08:20-08:40	55,1	41	34
02:40-03:00	63	37	28	08:40-09:00	54,5	37	31
03:00-03:20	56,9	35	26	09:00-09:20	53,5	37	32
03:20-03:40	61,3	36	25	09:20-09:40	55,7	41	33
03:40-04:00	66,8	40	34	09:40-10:00	56	41	31
04:00-04:20	56,4	38	26	10:00-10:20	50,8	36	33
04:20-04:40	59,8	35	30	10:20-10:40	56,8	45	31
04:40-05:00	54,4	38	33	10:40-11:00	48,1	36	33
05:00-05:20	51	37	30	11:00-11:20	55,5	36	28
05:20-05:40	53	38	31	11:20-11:40	52,9	38	34
05:40-06:00	52,3	36	32	11:40-12:00	54,2	40	36

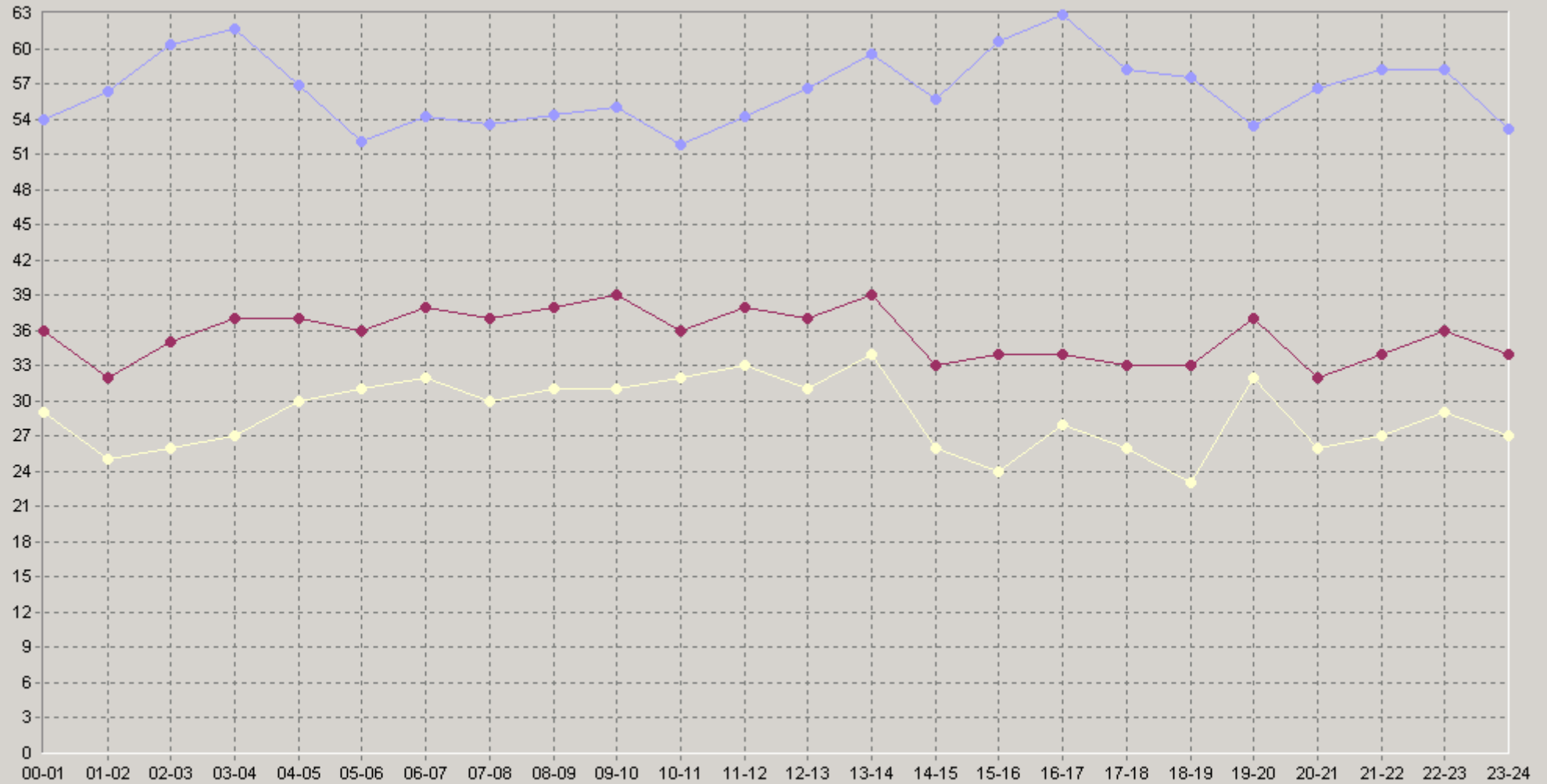
25.04.2008 17:20 - 27.04.2008 13:20

20 [10.0.3.252->62.61.7.2] G.723 SAA NumRTT's

		75>	90>			75>	90>
12:00-12:20	57,6	39	36	18:00-18:20	64	35	31
12:20-12:40	54,2	36	31	18:20-18:40	55,3	29	22
12:40-13:00	57,8	36	29	18:40-19:00	53,4	35	23
13:00-13:20	61,4	41	36	19:00-19:20	55	41	32
13:20-13:40	59,6	38	34	19:20-19:40	49	36	31
13:40-14:00	55,6	37	30	19:40-20:00	56,2	38	32
14:00-14:20	50,1	33	31	20:00-20:20	53,1	31	24
14:20-14:40	59,9	34	31	20:20-20:40	62,8	35	27
14:40-15:00	57,3	35	23	20:40-21:00	53,9	31	27
15:00-15:20	52,5	27	24	21:00-21:20	61,6	35	22
15:20-15:40	68,6	50	35	21:20-21:40	63,2	41	28
15:40-16:00	60,8	33	25	21:40-22:00	49,9	30	27
16:00-16:20	60,7	33	27	22:00-22:20	61,1	35	28
16:20-16:40	68	48	31	22:20-22:40	57,6	38	29
16:40-17:00	60,2	34	28	22:40-23:00	55,8	37	29
17:00-17:20	62,2	40	33	23:00-23:20	54,1	35	25
17:20-17:40	58,8	29	26	23:20-23:40	54,1	34	28
17:40-18:00	55,8	35	31	23:40-00:00	51,3	33	30

25.04.2008 17:20 - 27.04.2008 13:20

60 [10.0.3.252->62.61.7.2] G.723 SAA NumRTT's



◆ [BaseLine Avg] [10.0.3.252->62.61.7.2] G.723 SAA NumRTT's(60)(SLA-ON-SERVER3)
 ◆ [BaseLine Percnt90 (>=)] [10.0.3.252->62.61.7.2] G.723 SAA NumRTT's(60)(SLA-ON-SERVER3)

◆ [BaseLine Percnt75 (>=)] [10.0.3.252->62.61.7.2] G.723 SAA NumRTT's(60)(SLA-ON-SERVER3)