

25.04.2008 17:20 - 27.04.2008 13:20



	Cisco IP SLA G.729								
	IP- ■	■	■	■	■				
[10.0.3.252->62.61.7.2] G.729 Delay (usec)	<=85 000 78,5%	>85 000 20,8%	>200 000 0,42%	>290 000 0,15%	>370 000 0,15%	2637			
[10.0.3.252->62.61.7.2] G.729 PacketLoss (%)	<=1 49%	>1 9,97%	>2 8,3%	>3 9,06%	>5 23,7%	2638			
[10.0.3.252->62.61.7.2] G.729 Jitter (usec)	<=50 000 32,3%	>50 000 31%	>60 000 26,8%	>80 000 6,37%	>100 000 3,53%	2638			
[10.0.3.252->62.61.7.2] G.729 SAA NumRTT's	>=95 3,9%	<95 13,4%	<85 15,7%	<70 20,4%	<50 46,6%	2638			
	IP- ( )	0,38%	→→	1,86%	→→	9,29%	→→	31%	2638

(2 )

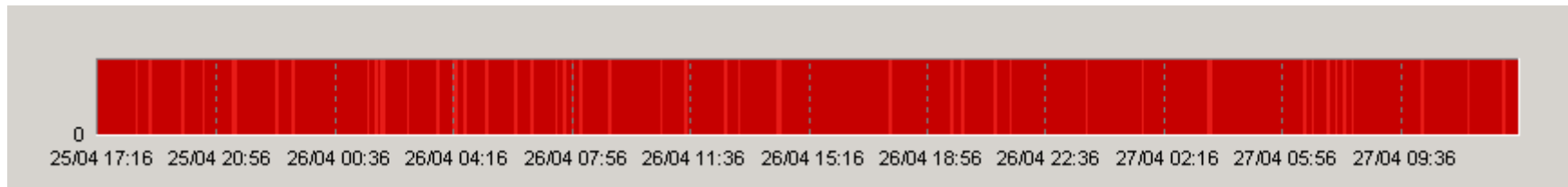
ProLAN

ProLAN.

PROLAN,

PROLAN  
PARTNER@PROLAN.RU

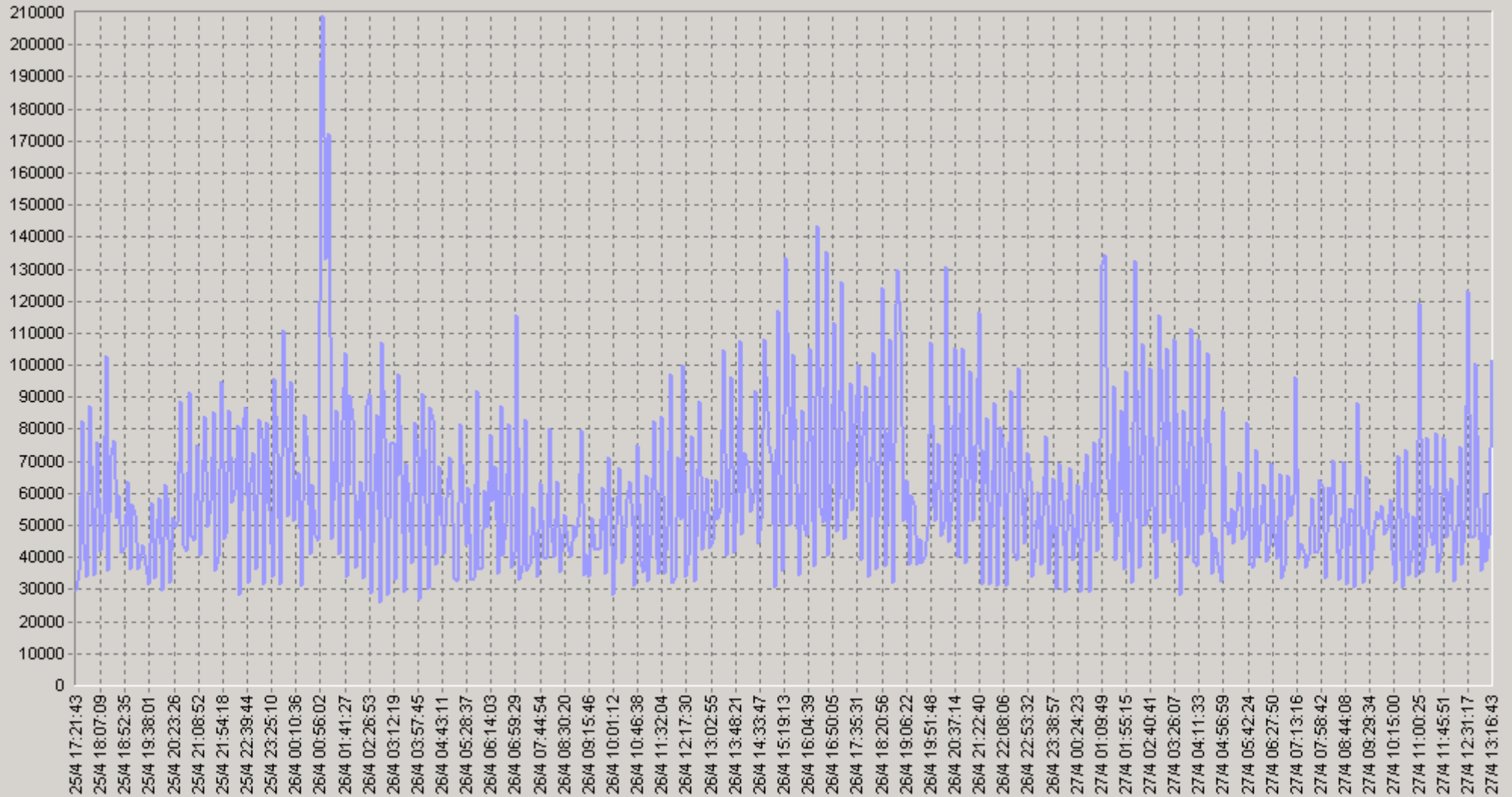
« »



0 25/04 17:16 25/04 20:58 26/04 00:36 26/04 04:16 26/04 07:56 26/04 11:36 26/04 15:16 26/04 18:56 26/04 22:36 27/04 02:16 27/04 05:56 27/04 09:36

25.04.2008 17:20 - 27.04.2008 13:20

[10.0.3.252-&gt;62.61.7.2] G.729 Delay (usec)



— [10.0.3.252-&gt;62.61.7.2] G.729 Delay (usec)(SLA-ON-SERVER3)

25.04.2008 17:20 - 27.04.2008 13:20

## 20 [10.0.3.252-&gt;62.61.7.2] G.729 Delay (usec)

		75<	90<			75<	90<
00:00-00:20	57 333	74 628	113 133	06:00-06:20	53 394	60 517	98 030
00:20-00:40	54 541	60 235	101 037	06:20-06:40	54 151	60 747	102 582
00:40-01:00	78 678	89 909	137 725	06:40-07:00	51 382	60 712	92 233
01:00-01:20	114 039	156 071	250 643	07:00-07:20	65 709	88 506	108 577
01:20-01:40	65 714	98 326	109 395	07:20-07:40	40 986	46 783	61 136
01:40-02:00	71 513	87 663	128 876	07:40-08:00	47 819	64 052	74 978
02:00-02:20	56 570	63 306	96 418	08:00-08:20	57 126	71 518	98 600
02:20-02:40	65 286	89 235	111 667	08:20-08:40	45 981	51 222	73 244
02:40-03:00	73 984	115 394	140 224	08:40-09:00	49 618	63 620	88 208
03:00-03:20	62 978	87 099	107 763	09:00-09:20	48 797	51 392	80 628
03:20-03:40	63 905	91 553	108 738	09:20-09:40	49 158	66 342	79 530
03:40-04:00	67 531	89 707	115 455	09:40-10:00	53 616	70 727	82 761
04:00-04:20	54 161	71 656	119 179	10:00-10:20	45 980	55 684	87 033
04:20-04:40	65 654	88 802	124 674	10:20-10:40	53 654	70 515	84 170
04:40-05:00	53 500	67 125	101 063	10:40-11:00	43 519	47 471	70 882
05:00-05:20	48 762	53 827	93 271	11:00-11:20	62 196	80 000	104 273
05:20-05:40	51 923	64 782	88 268	11:20-11:40	50 140	59 869	81 333
05:40-06:00	54 591	65 857	101 684	11:40-12:00	54 717	65 141	96 093

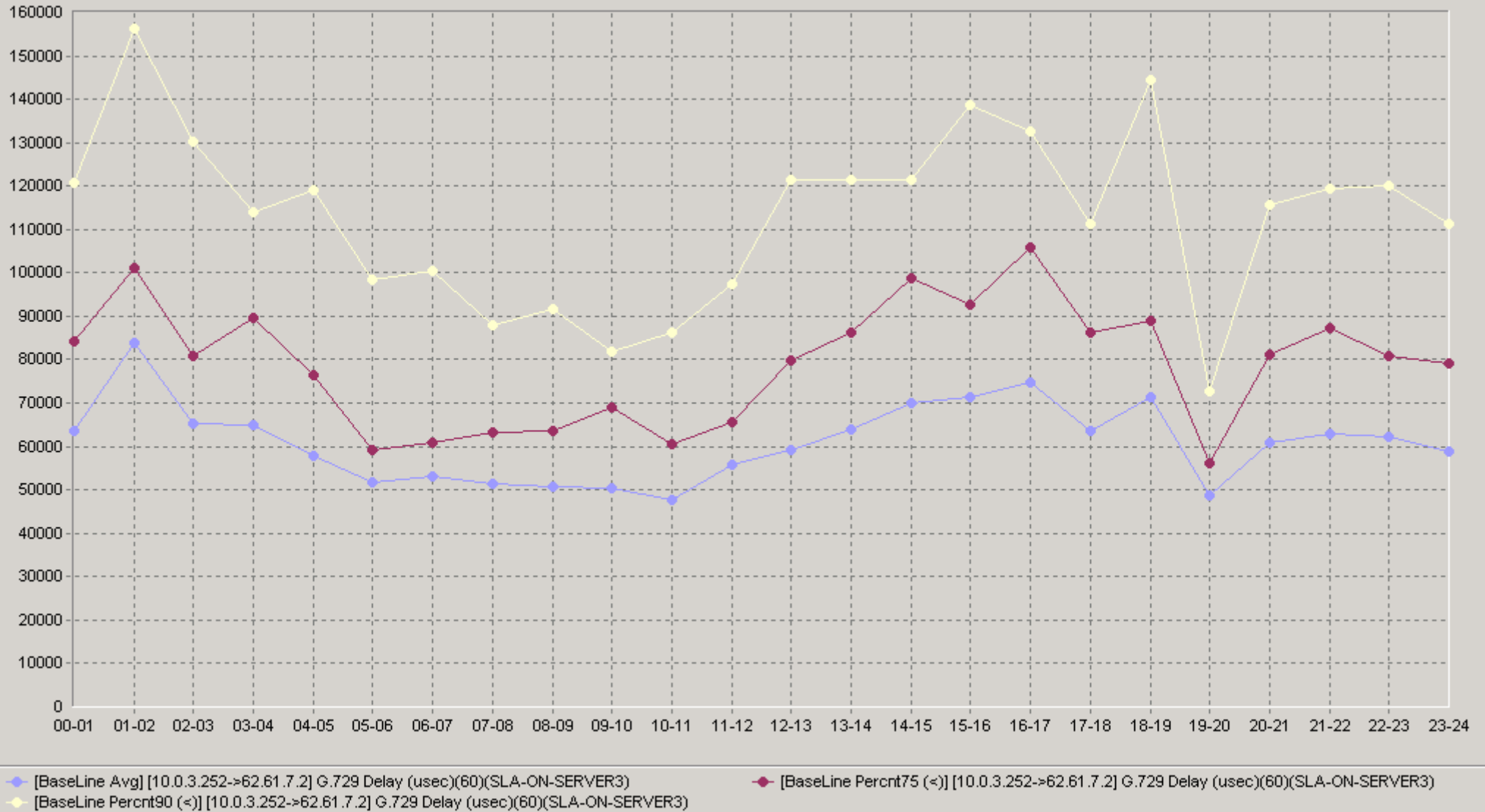
25.04.2008 17:20 - 27.04.2008 13:20

## 20 [10.0.3.252-&gt;62.61.7.2] G.729 Delay (usec)

		75<	90<			75<	90<
12:00-12:20	59 378	72 386	115 986	18:00-18:20	69 272	90 591	113 422
12:20-12:40	56 928	79 871	122 548	18:20-18:40	68 782	85 707	158 509
12:40-13:00	61 680	81 918	118 259	18:40-19:00	75 850	79 255	144 515
13:00-13:20	56 308	65 882	100 885	19:00-19:20	48 503	51 892	67 579
13:20-13:40	67 117	81 169	121 277	19:20-19:40	42 017	50 407	66 848
13:40-14:00	76 041	107 144	152 067	19:40-20:00	55 363	64 000	83 127
14:00-14:20	60 903	92 000	111 600	20:00-20:20	51 651	59 833	92 052
14:20-14:40	61 728	68 948	110 032	20:20-20:40	72 850	98 809	121 098
14:40-15:00	87 387	110 039	135 329	20:40-21:00	58 076	76 074	115 424
15:00-15:20	62 489	80 533	125 884	21:00-21:20	64 781	83 192	111 540
15:20-15:40	93 724	131 122	181 244	21:20-21:40	70 132	93 897	121 756
15:40-16:00	58 308	77 469	92 636	21:40-22:00	53 999	71 429	119 258
16:00-16:20	61 114	77 545	105 844	22:00-22:20	63 585	85 863	120 065
16:20-16:40	96 238	132 656	163 364	22:20-22:40	67 605	92 108	133 000
16:40-17:00	66 051	98 494	122 398	22:40-23:00	55 842	68 266	103 733
17:00-17:20	72 417	86 396	98 883	23:00-23:20	57 576	78 314	103 425
17:20-17:40	66 265	91 452	112 133	23:20-23:40	57 654	70 023	111 156
17:40-18:00	56 927	85 442	106 756	23:40-00:00	61 442	80 063	127 674

25.04.2008 17:20 - 27.04.2008 13:20

60 [10.0.3.252-&gt;62.61.7.2] G.729 Delay (usec)





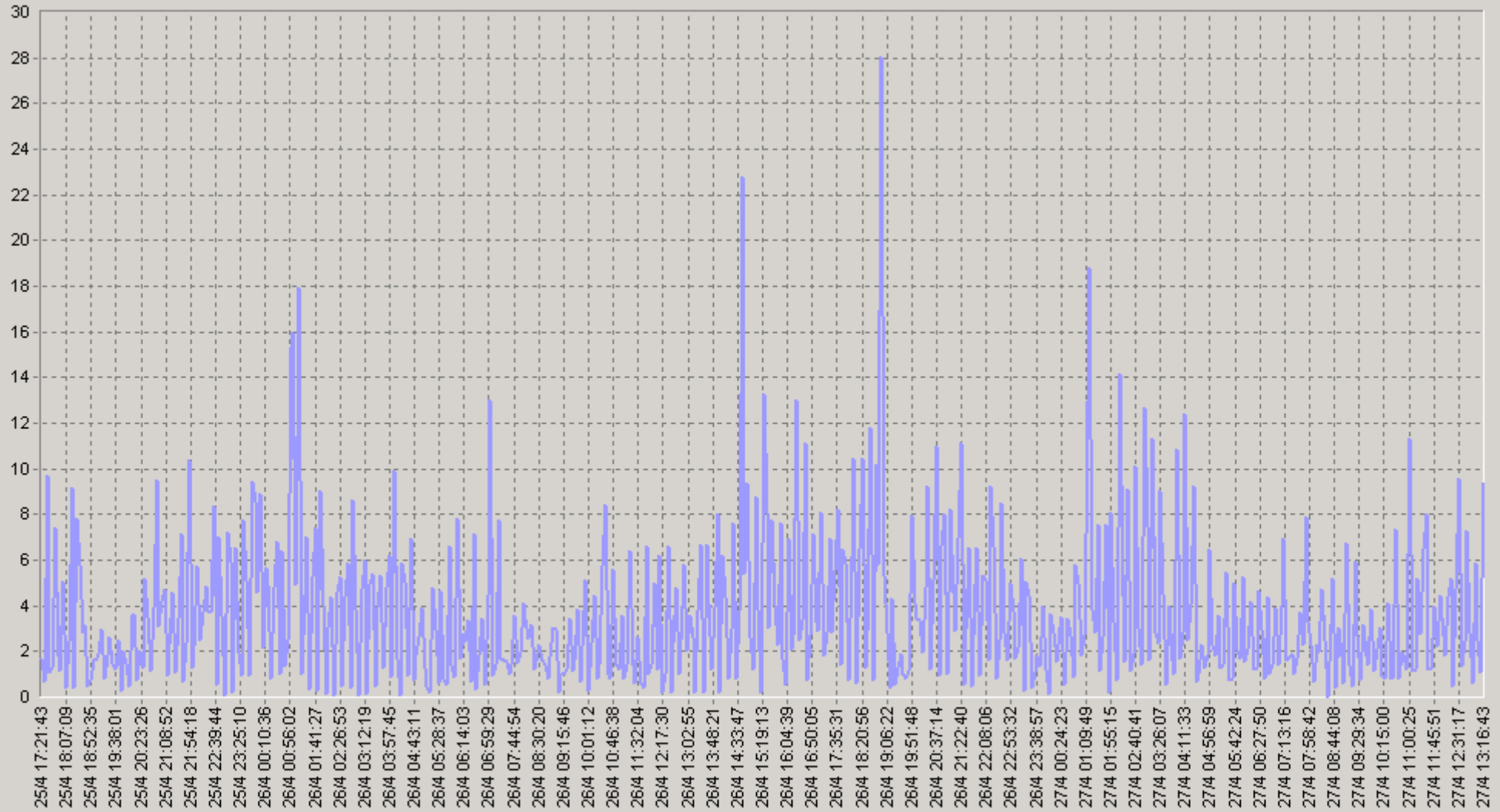
IP-

Cisco IP SLA

G.729

25.04.2008 17:20 - 27.04.2008 13:20

[10.0.3.252->62.61.7.2] G.729 Packet Loss (%)



[10.0.3.252->62.61.7.2] G.729 Packet Loss (%) (SLA-ON-SERVER3)

25.04.2008 17:20 - 27.04.2008 13:20

## 20 [10.0.3.252-&gt;62.61.7.2] G.729 Packet Loss (%)

		75<	90<			75<	90<
00:00-00:20	3,58	4	9	06:00-06:20	2,98	3	7
00:20-00:40	3,03	5	8	06:20-06:40	2,65	3	9
00:40-01:00	5,7	6	11	06:40-07:00	2,58	3	7
01:00-01:20	8,35	12	28	07:00-07:20	4,73	7	10
01:20-01:40	4,1	7	10	07:20-07:40	1,48	2	3
01:40-02:00	4,65	7	13	07:40-08:00	3,15	4	7
02:00-02:20	3,68	4	9	08:00-08:20	2,78	3	7
02:20-02:40	3,8	5	8	08:20-08:40	2,03	4	6
02:40-03:00	5,6	10	13	08:40-09:00	2,1	3	6
03:00-03:20	4,2	6	13	09:00-09:20	1,83	2	4
03:20-03:40	3,9	6	9	09:20-09:40	2,5	4	6
03:40-04:00	4,4	8	13	09:40-10:00	2,68	5	7
04:00-04:20	3,98	4	13	10:00-10:20	1,9	3	5
04:20-04:40	4,23	6	13	10:20-10:40	3,68	4	9
04:40-05:00	2,7	4	8	10:40-11:00	1,95	1	7
05:00-05:20	1,85	3	4	11:00-11:20	3,8	5	9
05:20-05:40	2,23	3	5	11:20-11:40	3	3	6
05:40-06:00	2,98	4	8	11:40-12:00	2,6	3	8

25.04.2008 17:20 - 27.04.2008 13:20

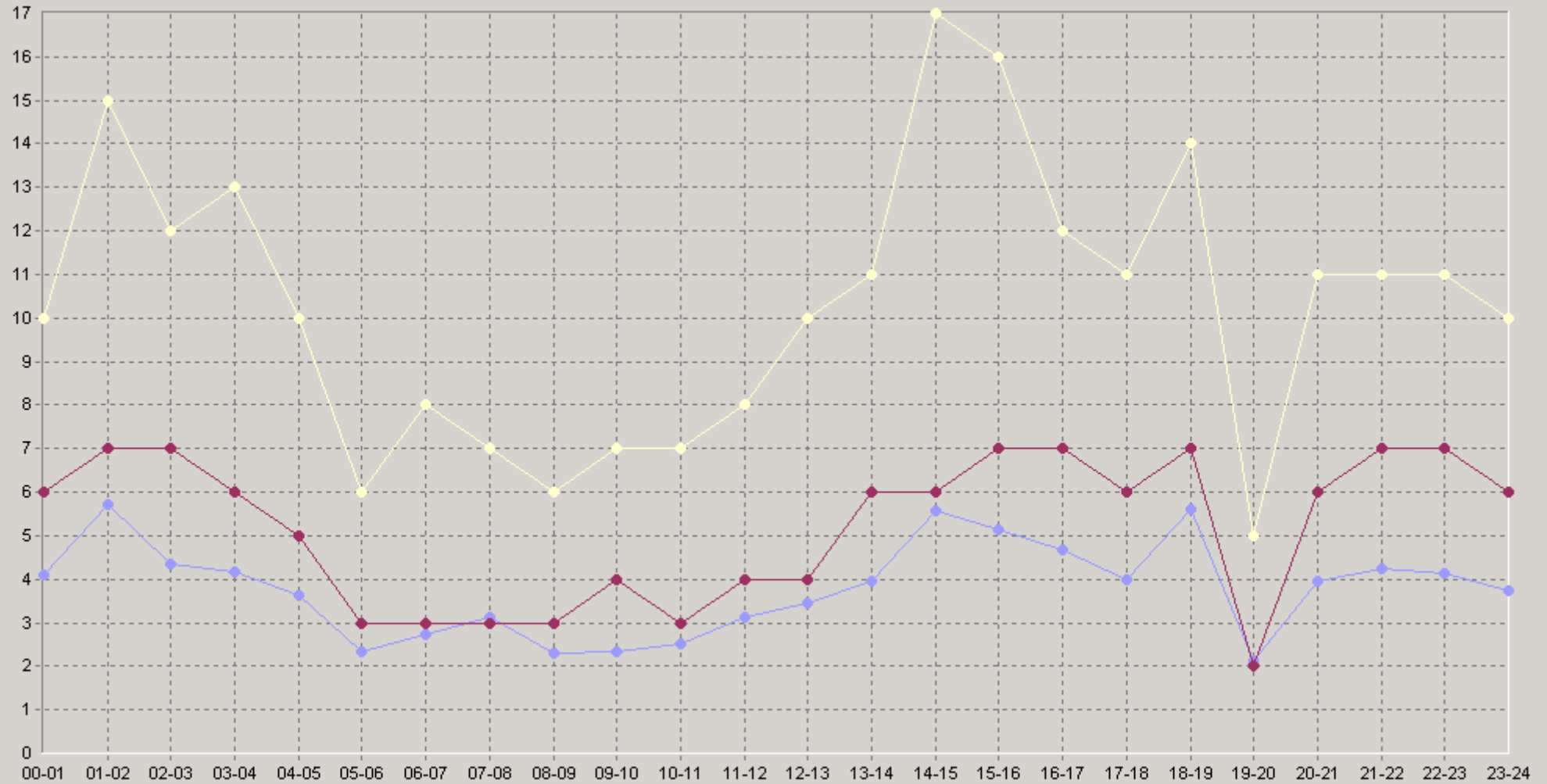
## 20. [10.0.3.252-&gt;62.61.7.2] G.729 Packet Loss (%)

		75<	90<			75<	90<
12:00-12:20	3,43	5	8	18:00-18:20	5	7	13
12:20-12:40	3,3	3	10	18:20-18:40	5,43	7	17
12:40-13:00	3,65	4	10	18:40-19:00	6,43	6	11
13:00-13:20	3,55	6	9	19:00-19:20	2,4	2	6
13:20-13:40	4,35	7	12	19:20-19:40	1,58	2	4
13:40-14:00	4,3	7	13	19:40-20:00	2,43	3	5
14:00-14:20	2,9	3	10	20:00-20:20	2,8	4	7
14:20-14:40	3,8	4	6	20:20-20:40	4,83	7	11
14:40-15:00	10,1	15	30	20:40-21:00	4,2	7	11
15:00-15:20	3,5	5	13	21:00-21:20	4,7	7	11
15:20-15:40	8,05	14	18	21:20-21:40	4,55	7	10
15:40-16:00	3,9	5	9	21:40-22:00	3,48	5	10
16:00-16:20	3,1	5	8	22:00-22:20	4,58	8	10
16:20-16:40	7,5	12	15	22:20-22:40	4,75	8	13
16:40-17:00	3,45	5	12	22:40-23:00	3,05	4	9
17:00-17:20	3,95	4	7	23:00-23:20	3,85	7	11
17:20-17:40	4,64	8	11	23:20-23:40	3,25	5	10
17:40-18:00	3,38	5	10	23:40-00:00	4,08	5	10



25.04.2008 17:20 - 27.04.2008 13:20

60 [10.0.3.252-&gt;62.61.7.2] G.729 Packet Loss (%)



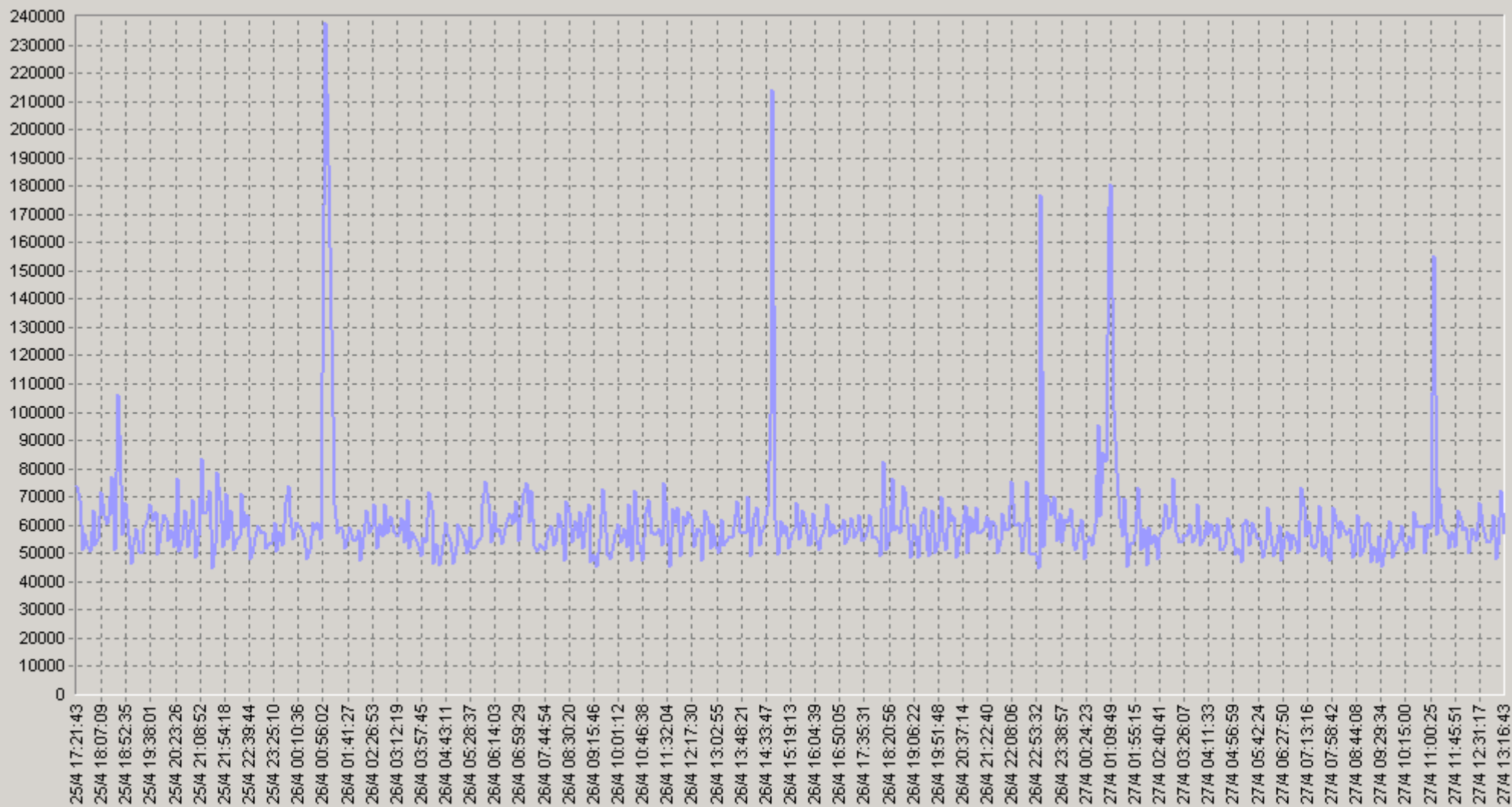
◆ [BaseLine Avg] [10.0.3.252->62.61.7.2] G.729 Packet Loss (%) (60) (SLA-ON-SERVER3)

◆ [BaseLine Percnt75 (<=)] [10.0.3.252->62.61.7.2] G.729 Packet Loss (%) (60) (SLA-ON-SERVER3)

◆ [BaseLine Percnt90 (<=)] [10.0.3.252->62.61.7.2] G.729 Packet Loss (%) (60) (SLA-ON-SERVER3)

25.04.2008 17:20 - 27.04.2008 13:20

[10.0.3.252-&gt;62.61.7.2] G.729 Jitter (usec)



— [10.0.3.252-&gt;62.61.7.2] G.729 Jitter (usec)(SLA-ON-SERVER3)

25.04.2008 17:20 - 27.04.2008 13:20

## 20 [10.0.3.252-&gt;62.61.7.2] G.729 Jitter (usec)

		75<	90<			75<	90<
00:00-00:20	57 435	62 471	73 909	06:00-06:20	58 527	63 133	74 900
00:20-00:40	54 108	57 833	67 556	06:20-06:40	56 414	64 889	74 824
00:40-01:00	87 431	86 583	122 360	06:40-07:00	57 816	67 231	79 875
01:00-01:20	138 454	168 714	273 667	07:00-07:20	65 912	71 083	83 929
01:20-01:40	61 635	69 212	78 000	07:20-07:40	56 890	64 000	71 111
01:40-02:00	53 954	61 424	80 417	07:40-08:00	52 768	56 933	64 706
02:00-02:20	57 075	61 308	69 600	08:00-08:20	59 585	67 857	83 750
02:20-02:40	56 537	63 583	71 214	08:20-08:40	56 952	62 571	72 333
02:40-03:00	60 357	65 633	80 000	08:40-09:00	56 142	62 941	79 455
03:00-03:20	60 310	63 125	75 600	09:00-09:20	56 171	61 696	76 481
03:20-03:40	57 933	61 077	68 000	09:20-09:40	54 637	61 714	73 115
03:40-04:00	55 955	62 941	71 333	09:40-10:00	53 406	60 071	71 800
04:00-04:20	60 496	68 167	77 733	10:00-10:20	55 497	63 786	68 400
04:20-04:40	51 906	56 162	65 762	10:20-10:40	59 005	62 800	75 375
04:40-05:00	55 577	62 087	70 727	10:40-11:00	58 037	65 143	84 182
05:00-05:20	54 671	60 941	71 167	11:00-11:20	71 752	61 600	88 150
05:20-05:40	55 475	65 067	71 667	11:20-11:40	58 230	65 407	77 842
05:40-06:00	58 511	63 529	79 818	11:40-12:00	59 501	66 107	90 227

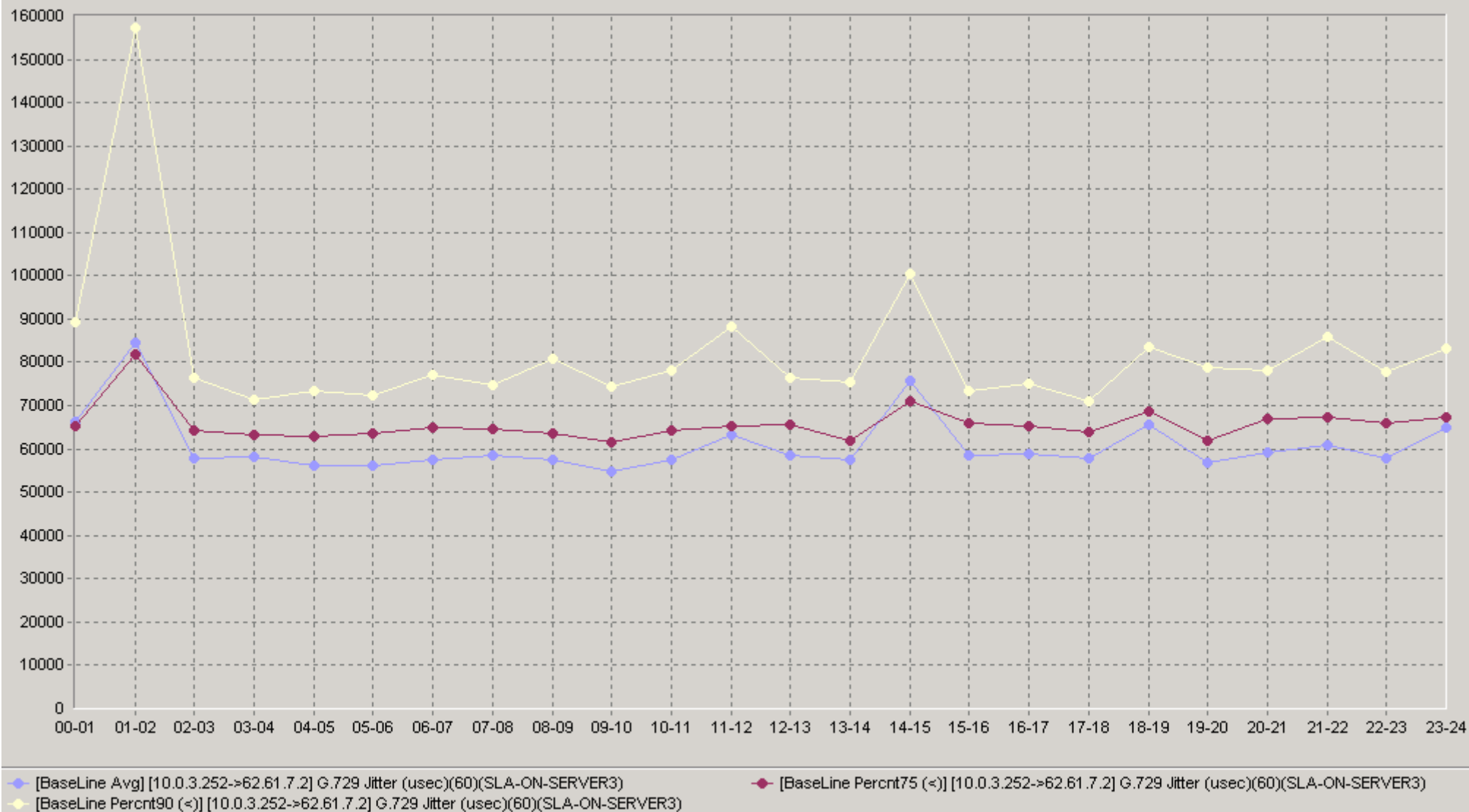
25.04.2008 17:20 - 27.04.2008 13:20

## 20 [10.0.3.252-&gt;62.61.7.2] G.729 Jitter (usec)

		75<	90<			75<	90<
12:00-12:20	59 887	67 739	75 214	18:00-18:20	61 027	64 296	78 500
12:20-12:40	57 055	62 182	66 391	18:20-18:40	74 019	69 000	83 414
12:40-13:00	58 325	68 688	79 316	18:40-19:00	61 826	69 667	78 667
13:00-13:20	56 323	61 583	74 667	19:00-19:20	52 429	55 000	63 167
13:20-13:40	57 426	59 367	66 292	19:20-19:40	58 268	65 750	80 235
13:40-14:00	60 273	73 370	79 500	19:40-20:00	59 652	62 733	78 714
14:00-14:20	62 150	70 308	76 600	20:00-20:20	59 009	66 300	76 167
14:20-14:40	58 926	64 200	71 000	20:20-20:40	58 087	66 125	73 529
14:40-15:00	106 288	108 500	138 261	20:40-21:00	60 807	71 129	81 273
15:00-15:20	57 656	66 350	71 536	21:00-21:20	61 392	67 417	85 857
15:20-15:40	59 624	61 500	73 382	21:20-21:40	59 342	64 524	87 591
15:40-16:00	58 175	61 781	68 250	21:40-22:00	62 044	69 897	83 118
16:00-16:20	56 433	63 733	68 556	22:00-22:20	60 237	66 000	73 250
16:20-16:40	60 605	65 929	79 500	22:20-22:40	62 476	69 833	80 769
16:40-17:00	59 048	66 364	71 619	22:40-23:00	51 004	54 826	67 286
17:00-17:20	56 624	63 867	70 300	23:00-23:20	73 086	63 824	99 750
17:20-17:40	59 514	66 769	70 964	23:20-23:40	59 859	64 400	82 391
17:40-18:00	57 206	62 667	69 727	23:40-00:00	61 919	70 818	81 375

25.04.2008 17:20 - 27.04.2008 13:20

60 [10.0.3.252-&gt;62.61.7.2] G.729 Jitter (usec)





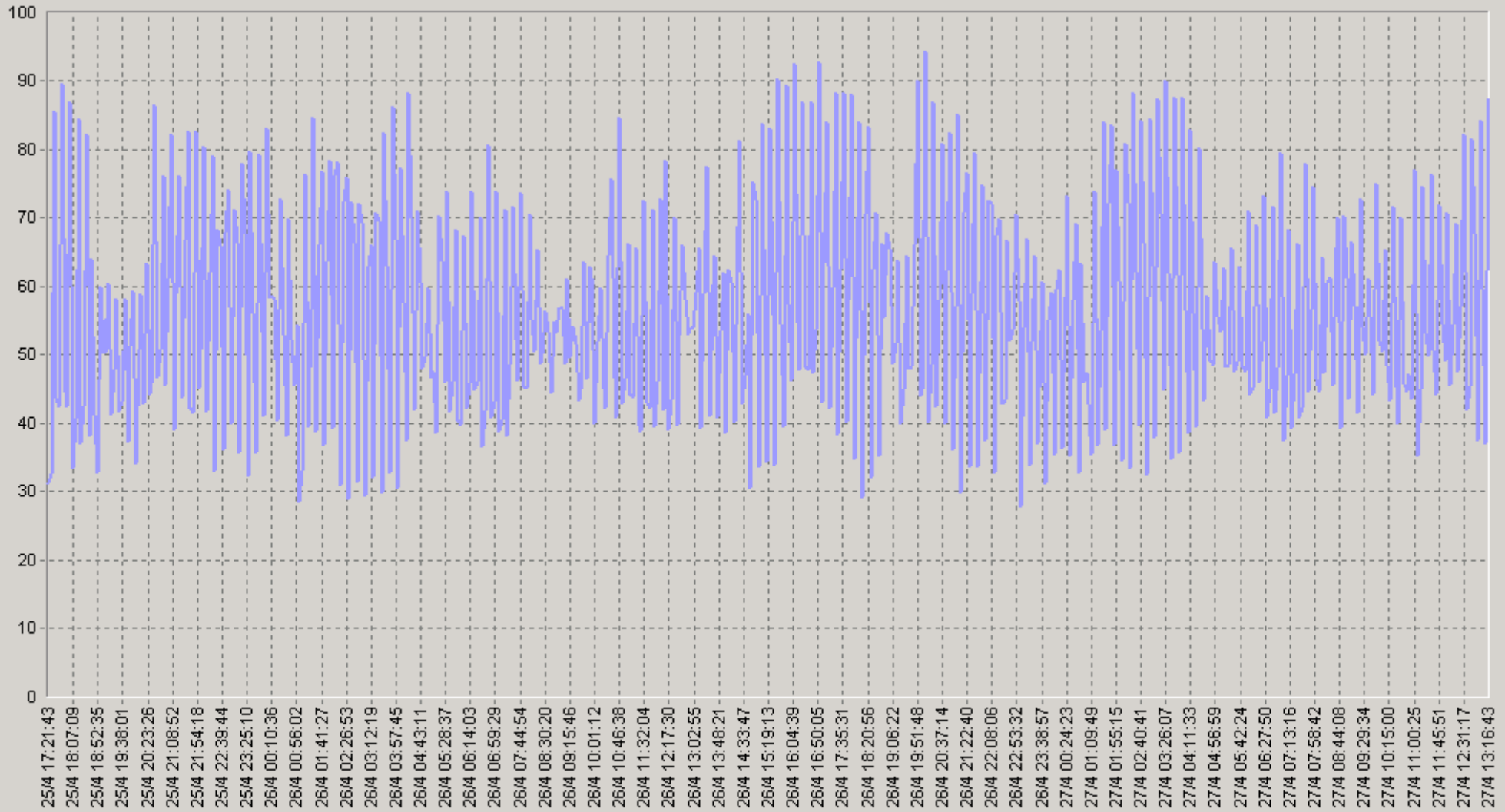
IP-

Cisco IP SLA

G.729

25.04.2008 17:20 - 27.04.2008 13:20

[10.0.3.252->62.61.7.2] G.729 SAA NumRTT's



[10.0.3.252->62.61.7.2] G.729 SAA NumRTT's(SLA-ON-SERVER3)

25.04.2008 17:20 - 27.04.2008 13:20

## 20 [10.0.3.252-&gt;62.61.7.2] G.729 SAA NumRTT's

		75>	90>			75>	90>
00:00-00:20	56,3	33	31	06:00-06:20	54,3	39	32
00:20-00:40	54	35	30	06:20-06:40	51,3	35	33
00:40-01:00	53,9	36	32	06:40-07:00	55,6	38	35
01:00-01:20	46,9	29	17	07:00-07:20	52,2	35	31
01:20-01:40	57,8	36	26	07:20-07:40	50,9	36	31
01:40-02:00	65,8	47	31	07:40-08:00	57,7	40	33
02:00-02:20	58,5	36	30	08:00-08:20	56,1	40	35
02:20-02:40	60,4	33	26	08:20-08:40	55,5	42	35
02:40-03:00	62,6	38	27	08:40-09:00	55,4	38	31
03:00-03:20	56	37	25	09:00-09:20	53,3	40	31
03:20-03:40	61,1	33	28	09:20-09:40	54,6	40	33
03:40-04:00	65,8	37	31	09:40-10:00	56,5	44	34
04:00-04:20	53,8	35	27	10:00-10:20	50,9	39	33
04:20-04:40	61	36	31	10:20-10:40	57,3	40	30
04:40-05:00	55,4	40	34	10:40-11:00	49,6	36	33
05:00-05:20	52,3	37	34	11:00-11:20	56,2	38	31
05:20-05:40	54,8	39	31	11:20-11:40	53,1	38	33
05:40-06:00	53,3	38	31	11:40-12:00	53,1	38	33

25.04.2008 17:20 - 27.04.2008 13:20

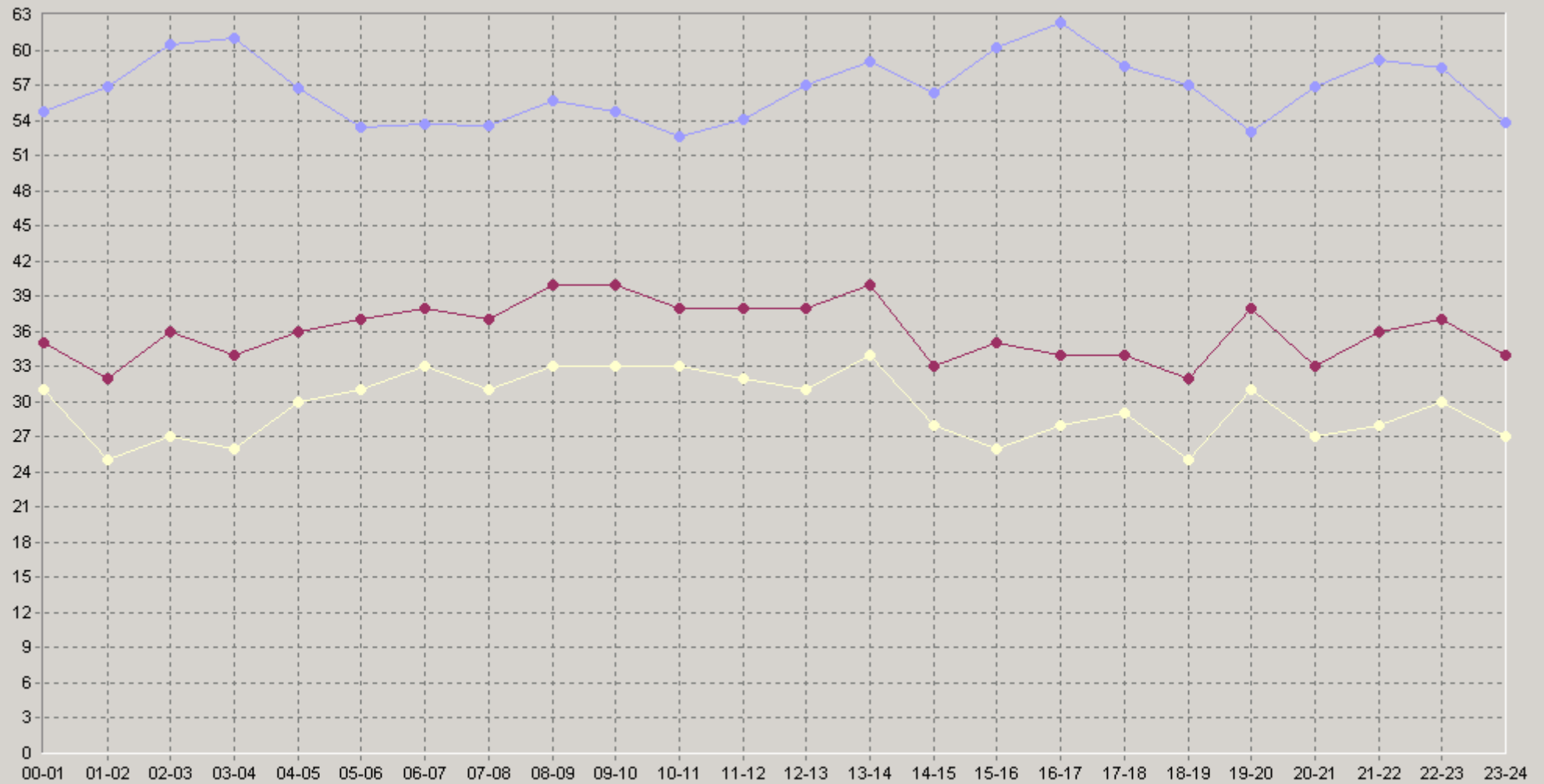
## 20 [10.0.3.252-&gt;62.61.7.2] G.729 SAA NumRTT's

		75>	90>			75>	90>
12:00-12:20	58,2	40	35	18:00-18:20	62,3	32	27
12:20-12:40	54,3	37	29	18:20-18:40	55,3	31	26
12:40-13:00	58,8	37	34	18:40-19:00	53,4	36	23
13:00-13:20	60,8	43	36	19:00-19:20	54,1	39	34
13:20-13:40	59,5	39	36	19:20-19:40	49	38	33
13:40-14:00	55,2	37	30	19:40-20:00	56,1	37	29
14:00-14:20	50,6	39	31	20:00-20:20	52,2	32	27
14:20-14:40	60	39	28	20:20-20:40	64	42	28
14:40-15:00	58,6	31	26	20:40-21:00	54,4	32	28
15:00-15:20	54,5	32	28	21:00-21:20	61,6	36	25
15:20-15:40	66	40	26	21:20-21:40	64,1	42	30
15:40-16:00	60	37	32	21:40-22:00	51,8	35	27
16:00-16:20	60,7	35	28	22:00-22:20	61,3	37	30
16:20-16:40	67,5	48	28	22:20-22:40	57,5	37	29
16:40-17:00	59	34	31	22:40-23:00	56,6	38	33
17:00-17:20	62,7	38	35	23:00-23:20	55	33	26
17:20-17:40	59,4	32	24	23:20-23:40	54,6	37	32
17:40-18:00	55,7	33	29	23:40-00:00	52	35	27



25.04.2008 17:20 - 27.04.2008 13:20

60 [10.0.3.252-&gt;62.61.7.2] G.729 SAA NumRTT's



◆ [BaseLine Avg] [10.0.3.252->62.61.7.2] G.729 SAA NumRTT's(60)(SLA-ON-SERVER3)  
 ◆ [BaseLine Percnt90 (>=)] [10.0.3.252->62.61.7.2] G.729 SAA NumRTT's(60)(SLA-ON-SERVER3)

◆ [BaseLine Percnt75 (>=)] [10.0.3.252->62.61.7.2] G.729 SAA NumRTT's(60)(SLA-ON-SERVER3)