

25.04.2008 17:20 - 27.04.2008 13:20



	IP-	Cisco IP SLA	G. 711u			
	■	■	■	■	■	
IP SLA G 711u [10.0.3.252->62.61.7.2] SNMP Device Availability (%)	>=99 99,7%	<99 0%	<96 0%	<94 0%	<90 0,27%	2621
IP SLA G 711u [10.0.3.252->62.61.7.2] MOS	>=4,4 0%	<4,4 88,2%	<3,6 11,5%	<3,1 0,11%	<2,6 0,15%	2614
IP SLA G 711u [10.0.3.252->62.61.7.2] ICPIF	<=10 64,5%	>10 19,3%	>20 15,9%	>30 0,19%	>45 0,11%	2614
IP SLA G 711u [10.0.3.252->62.61.7.2] Delay (usec)	<=225 000 99,5%	>225 000 0,11%	>250 000 0,19%	>310 000 0,08%	>380 000 0,15%	2611
IP SLA G 711u [10.0.3.252->62.61.7.2] PacketLoss (%)	<=1 46,1%	>1 12,9%	>2 6,89%	>3 9,53%	>5 24,7%	2614
IP SLA G 711u [10.0.3.252->62.61.7.2] Jitter (usec)	<=50 000 36,9%	>50 000 30,1%	>60 000 23,6%	>80 000 5,47%	>100 000 3,9%	2614
IP SLA G 711u [10.0.3.252->62.61.7.2] The Number of Round Trip Operations	>=95 4,59%	<95 12,5%	<85 15,7%	<70 20%	<50 47,2%	2614
	IP- ()	0%	→→ 1,87%	→→ 8,51%	→→ 29,6%	2621

(2)

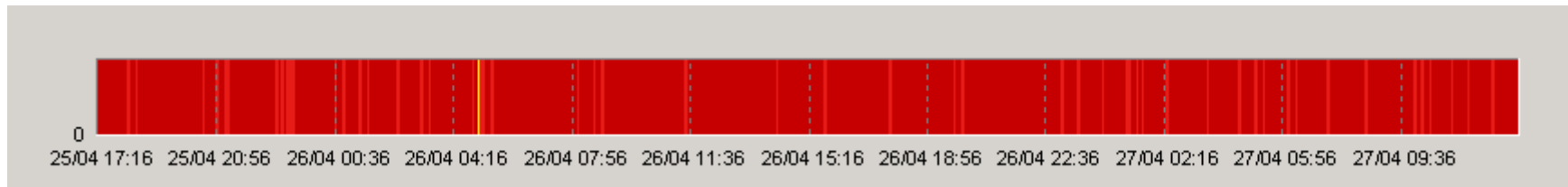
ProLAN

ProLAN.

PROLAN,

PROLAN
PARTNER@PROLAN.RU

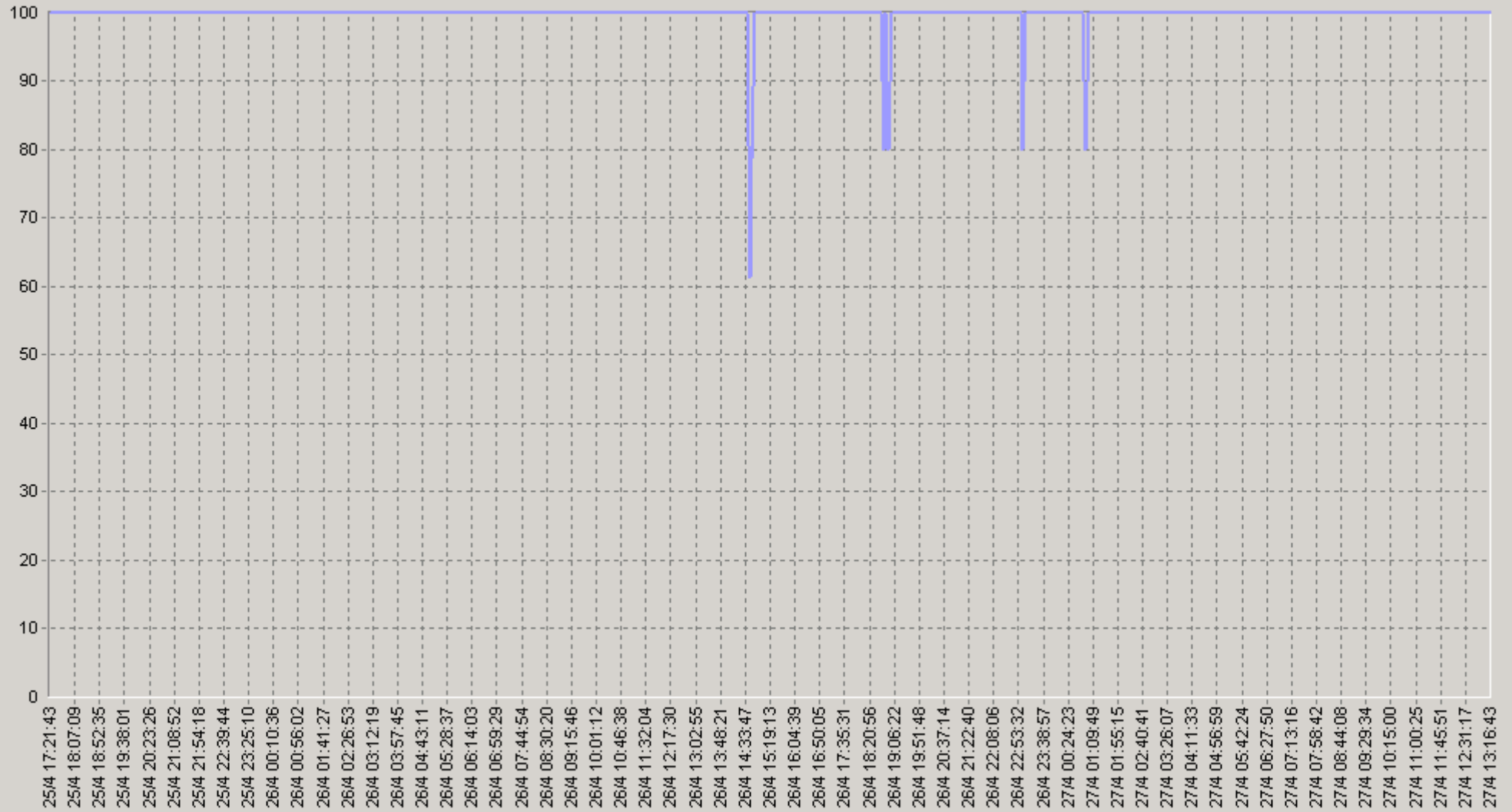
« »



0 25/04 17:16 25/04 20:58 26/04 00:36 26/04 04:16 26/04 07:56 26/04 11:36 26/04 15:16 26/04 18:56 26/04 22:36 27/04 02:16 27/04 05:56 27/04 09:36

25.04.2008 17:20 - 27.04.2008 13:20

IP SLA G711u [10.0.3.252->62.61.7.2] SNMP Device Availability (%)



IP SLA G711u [10.0.3.252->62.61.7.2] SNMP Device Availability (%) (SLA-ON-SERVER3)

25.04.2008 17:20 - 27.04.2008 13:20

20 IP SLA G711u [10.0.3.252->62.61.7.2] SNMP Device Availability (%)

		75>	90>			75>	90>
00:00-00:20	100	100	100	06:00-06:20	100	100	100
00:20-00:40	100	100	100	06:20-06:40	100	100	100
00:40-01:00	97,4	100	100	06:40-07:00	100	100	100
01:00-01:20	100	100	100	07:00-07:20	100	100	100
01:20-01:40	100	100	100	07:20-07:40	100	100	100
01:40-02:00	100	100	100	07:40-08:00	100	100	100
02:00-02:20	100	100	100	08:00-08:20	100	100	100
02:20-02:40	100	100	100	08:20-08:40	100	100	100
02:40-03:00	100	100	100	08:40-09:00	100	100	100
03:00-03:20	100	100	100	09:00-09:20	100	100	100
03:20-03:40	100	100	100	09:20-09:40	100	100	100
03:40-04:00	100	100	100	09:40-10:00	100	100	100
04:00-04:20	100	100	100	10:00-10:20	100	100	100
04:20-04:40	100	100	100	10:20-10:40	100	100	100
04:40-05:00	100	100	100	10:40-11:00	100	100	100
05:00-05:20	100	100	100	11:00-11:20	100	100	100
05:20-05:40	100	100	100	11:20-11:40	100	100	100
05:40-06:00	100	100	100	11:40-12:00	100	100	100

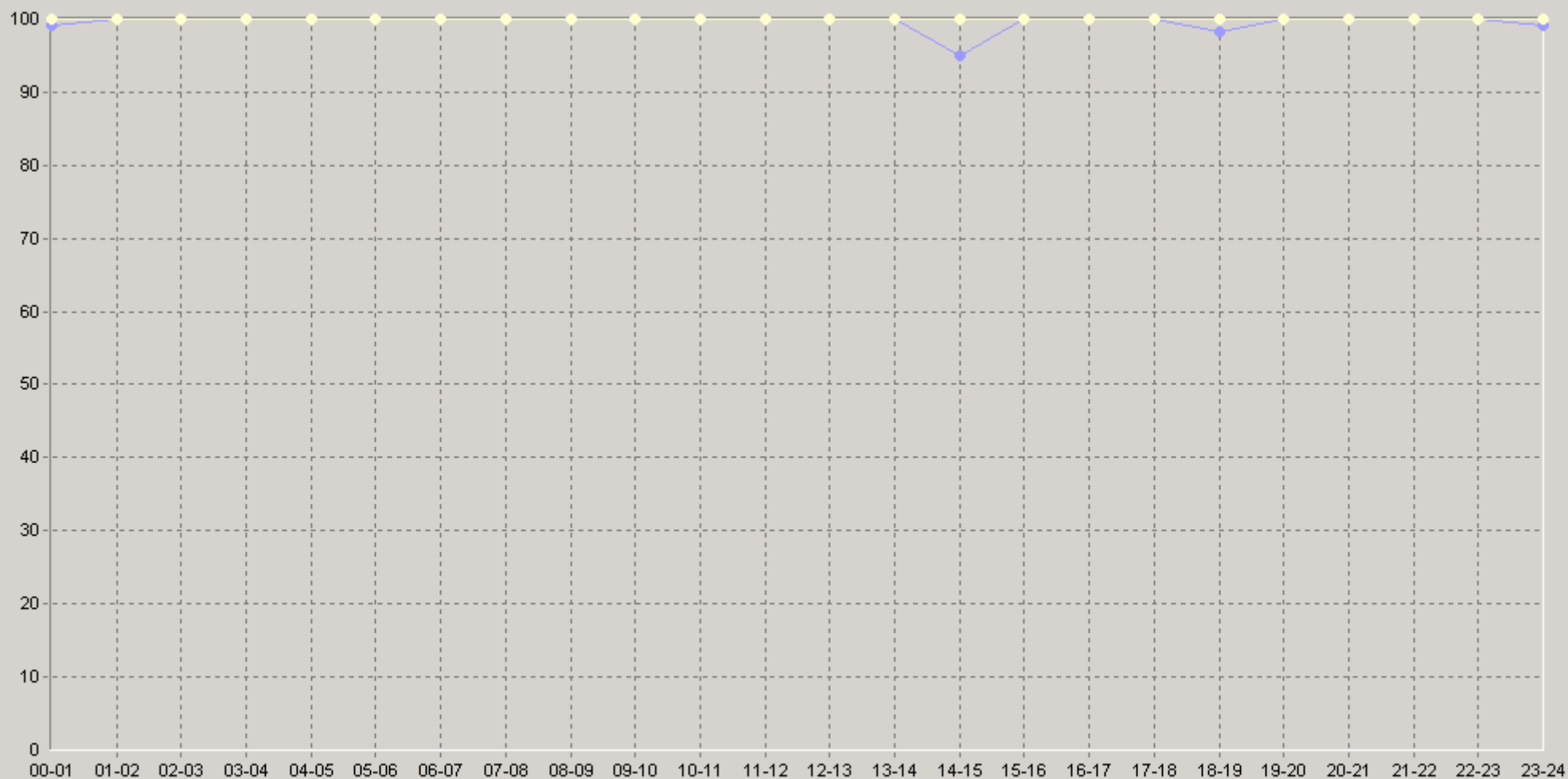
25.04.2008 17:20 - 27.04.2008 13:20

20 IP SLA G711u [10.0.3.252->62.61.7.2] SNMP Device Availability (%)

		75>	90>			75>	90>
12:00-12:20	100	100	100	18:00-18:20	100	100	100
12:20-12:40	100	100	100	18:20-18:40	100	100	100
12:40-13:00	100	100	100	18:40-19:00	95	100	100
13:00-13:20	100	100	100	19:00-19:20	100	100	100
13:20-13:40	100	100	100	19:20-19:40	100	100	100
13:40-14:00	100	100	100	19:40-20:00	100	100	100
14:00-14:20	100	100	100	20:00-20:20	100	100	100
14:20-14:40	100	100	100	20:20-20:40	100	100	100
14:40-15:00	85	100	0	20:40-21:00	100	100	100
15:00-15:20	100	100	100	21:00-21:20	100	100	100
15:20-15:40	100	100	100	21:20-21:40	100	100	100
15:40-16:00	100	100	100	21:40-22:00	100	100	100
16:00-16:20	100	100	100	22:00-22:20	100	100	100
16:20-16:40	100	100	100	22:20-22:40	100	100	100
16:40-17:00	100	100	100	22:40-23:00	100	100	100
17:00-17:20	100	100	100	23:00-23:20	97,3	100	100
17:20-17:40	100	100	100	23:20-23:40	100	100	100
17:40-18:00	100	100	100	23:40-00:00	100	100	100

25.04.2008 17:20 - 27.04.2008 13:20

60 IP SLA G711u [10.0.3.252->62.61.7.2] SNMP Device Availability (%)



◆ [BaseLine Avg] IP SLA G711u [10.0.3.252->62.61.7.2] SNMP Device Availability (%) (60) (SLA-ON-SERVER3)
 ◆ [BaseLine Percnt75 (>)] IP SLA G711u [10.0.3.252->62.61.7.2] SNMP Device Availability (%) (60) (SLA-ON-SERVER3)
 ◆ [BaseLine Percnt90 (>)] IP SLA G711u [10.0.3.252->62.61.7.2] SNMP Device Availability (%) (60) (SLA-ON-SERVER3)



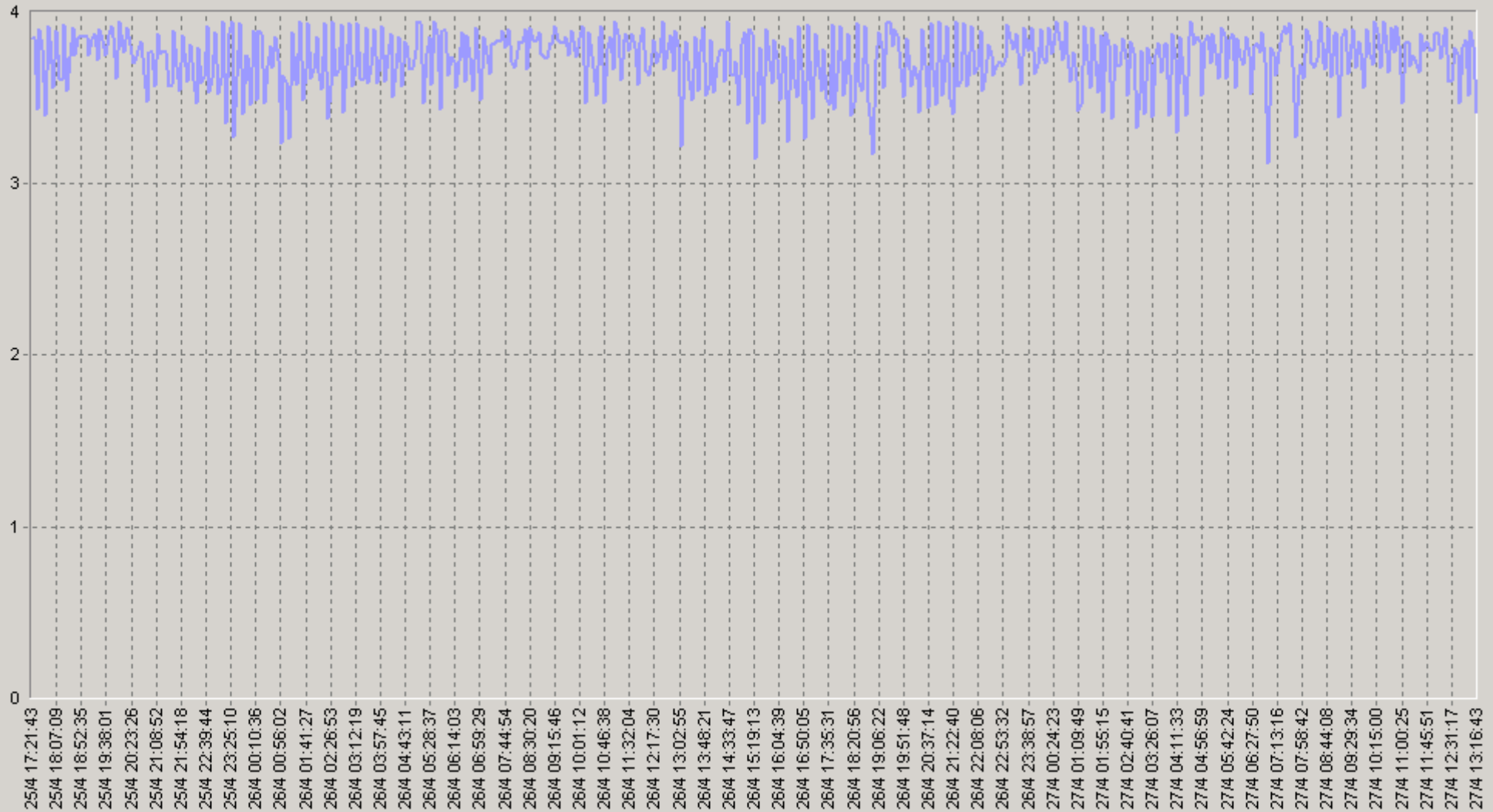
IP-

Cisco IP SLA

G.711u

25.04.2008 17:20 - 27.04.2008 13:20

IP SLA G711u [10.0.3.252->62.61.7.2] MOS



IP SLA G711u [10.0.3.252->62.61.7.2] MOS(SLA-ON-SERVER3)

25.04.2008 17:20 - 27.04.2008 13:20

20 IP SLA G711u [10.0.3.252->62.61.7.2] MDS

		75>	90>		75>	90>	
00:00-00:20	4,14	4,06	3,5	06:00-06:20	4,09	3,96	3,8
00:20-00:40	4,15	4,06	3,8	06:20-06:40	4,12	4,15	3,55
00:40-01:00	4,04	3,88	3,4	06:40-07:00	4,03	3,8	3,6
01:00-01:20	3,98	3,68	3,45	07:00-07:20	4,08	3,88	3,5
01:20-01:40	4,07	3,8	3,5	07:20-07:40	4,25	4,21	3,96
01:40-02:00	4,06	3,96	3,5	07:40-08:00	4,07	4,06	3,6
02:00-02:20	4,11	3,96	3,68	08:00-08:20	4,14	3,96	3,88
02:20-02:40	4,05	3,88	3,5	08:20-08:40	4,17	4,06	3,88
02:40-03:00	4	3,5	3,5	08:40-09:00	4,17	4,06	3,8
03:00-03:20	4,08	3,88	3,55	09:00-09:20	4,16	4,15	3,68
03:20-03:40	4,03	3,68	3,5	09:20-09:40	4,15	4,06	3,8
03:40-04:00	4,07	3,8	3,5	09:40-10:00	4,16	4,06	3,8
04:00-04:20	4,11	3,96	3,6	10:00-10:20	4,18	4,15	3,8
04:20-04:40	4,05	3,8	3,5	10:20-10:40	4,13	4,06	3,8
04:40-05:00	4,12	4,06	3,5	10:40-11:00	4,17	4,15	3,6
05:00-05:20	4,18	4,06	3,97	11:00-11:20	4,12	3,96	3,68
05:20-05:40	4,17	4,06	3,88	11:20-11:40	4,17	4,06	3,96
05:40-06:00	4,12	4,06	3,64	11:40-12:00	4,16	4,06	3,8

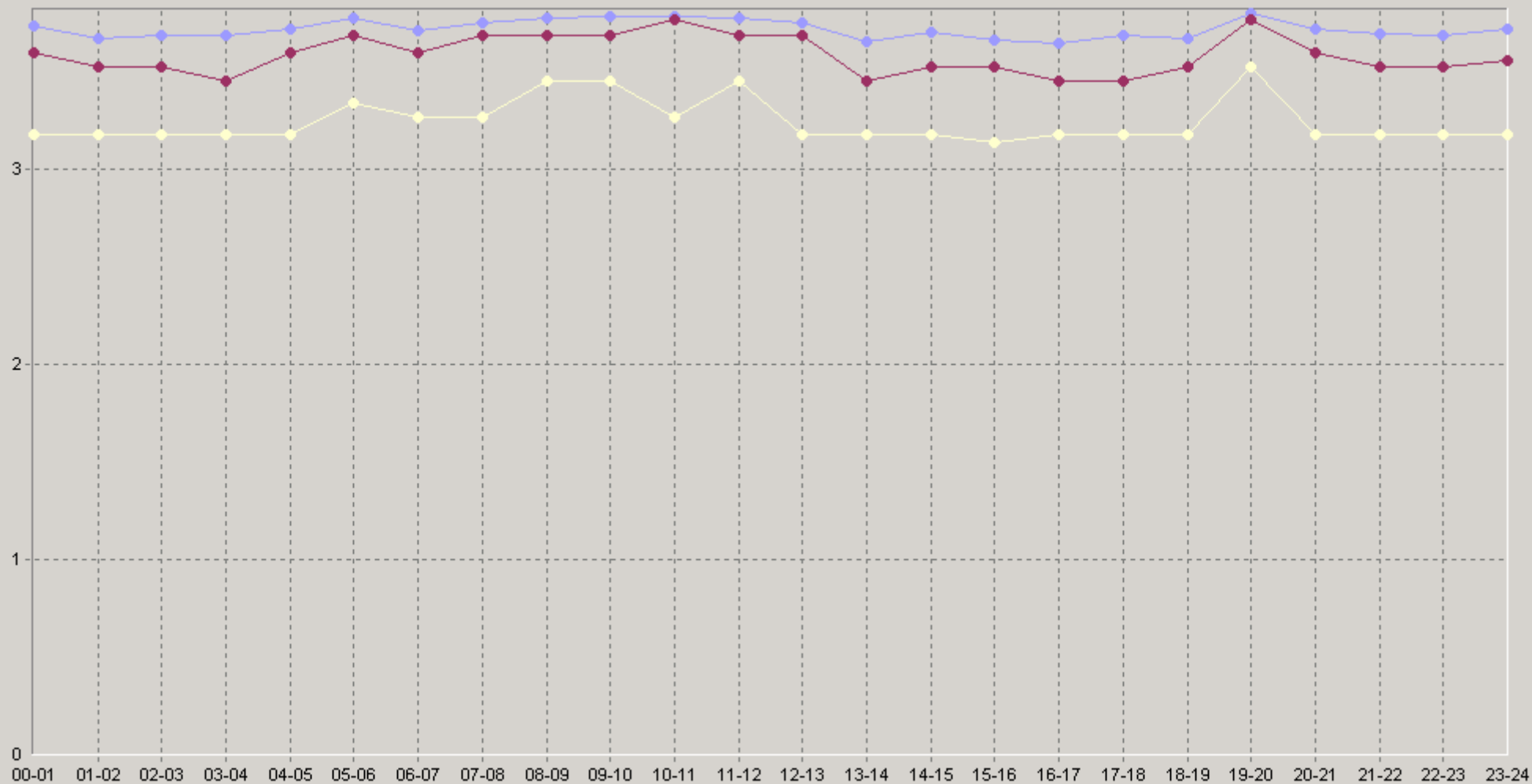
25.04.2008 17:20 - 27.04.2008 13:20

20 IP SLA G711u [10.0.3.252->62.61.7.2] MDS

		75>	90>			75>	90>
12:00-12:20	4,15	4,15	3,5	18:00-18:20	3,99	3,68	3,5
12:20-12:40	4,12	3,96	3,5	18:20-18:40	4,08	3,96	3,45
12:40-13:00	4,13	4,06	3,8	18:40-19:00	4,05	3,8	3,5
13:00-13:20	4,02	3,88	3,5	19:00-19:20	4,17	4,15	3,8
13:20-13:40	3,99	3,8	3,5	19:20-19:40	4,23	4,21	3,96
13:40-14:00	4,06	3,76	3,5	19:40-20:00	4,15	4,15	3,68
14:00-14:20	4,08	3,96	3,6	20:00-20:20	4,13	4,06	3,68
14:20-14:40	4,11	4,06	3,68	20:20-20:40	4,05	3,96	3,5
14:40-15:00	4,02	3,78	3,5	20:40-21:00	4,09	3,96	3,5
15:00-15:20	4,13	4,06	3,5	21:00-21:20	4,05	3,88	3,6
15:20-15:40	3,83	3,45	3,45	21:20-21:40	4,01	3,8	3,5
15:40-16:00	4,14	4,06	3,88	21:40-22:00	4,14	4,06	3,5
16:00-16:20	4,06	3,88	3,8	22:00-22:20	4,04	3,88	3,6
16:20-16:40	3,91	3,5	3,45	22:20-22:40	4,04	3,88	3,5
16:40-17:00	4,06	3,68	3,5	22:40-23:00	4,09	3,95	3,5
17:00-17:20	4,03	3,88	3,8	23:00-23:20	4,11	3,96	3,5
17:20-17:40	4,03	3,68	3,5	23:20-23:40	4,09	3,8	3,5
17:40-18:00	4,11	3,96	3,5	23:40-00:00	4,1	3,96	3,5

25.04.2008 17:20 - 27.04.2008 13:20

60 IP SLA G711u [10.0.3.252->62.61.7.2] MOS

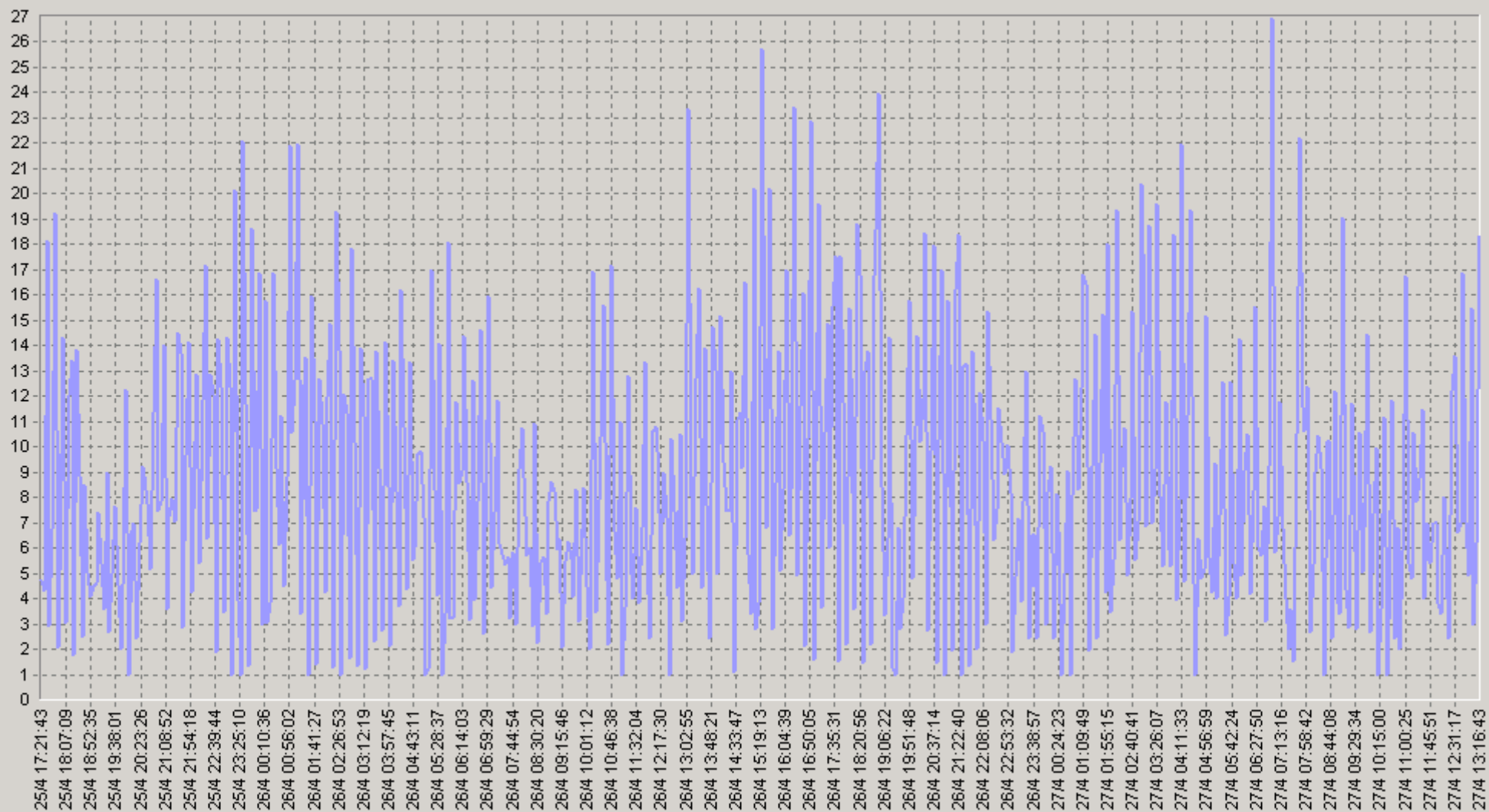


◆ [BaseLine Avg] IP SLA G711u [10.0.3.252->62.61.7.2] MOS(60)(SLA-ON-SERVER3)
 ◆ [BaseLine Percnt90 (>)] IP SLA G711u [10.0.3.252->62.61.7.2] MOS(60)(SLA-ON-SERVER3)

◆ [BaseLine Percnt75 (>)] IP SLA G711u [10.0.3.252->62.61.7.2] MOS(60)(SLA-ON-SERVER3)

25.04.2008 17:20 - 27.04.2008 13:20

IP SLA G711u [10.0.3.252->62.61.7.2] ICMPF



— IP SLA G711u [10.0.3.252->62.61.7.2] ICMPF(SLA-ON-SERVER3)

25.04.2008 17:20 - 27.04.2008 13:20

20 IP SLA G711u [10.0.3.252->62.61.7.2] ICMP

		75<	90<			75<	90<
00:00-00:20	7,28	11	25	06:00-06:20	9,25	14	18
00:20-00:40	7,23	11	18	06:20-06:40	7,8	8	24
00:40-01:00	10	16	23	06:40-07:00	10,3	18	23
01:00-01:20	11,7	19,5	26	07:00-07:20	8,95	16	25
01:20-01:40	9,19	16	25	07:20-07:40	4,3	6	14
01:40-02:00	10	14	25	07:40-08:00	9,43	11	23
02:00-02:20	8,33	14	21	08:00-08:20	7,6	14	16
02:20-02:40	10	16	25	08:20-08:40	6,68	11	16
02:40-03:00	11,1	25	25	08:40-09:00	6,58	11	18
03:00-03:20	9,25	16	24	09:00-09:20	6,65	8	21
03:20-03:40	10,7	18	25	09:20-09:40	7,18	11	18
03:40-04:00	9,38	18	25	09:40-10:00	6,75	11	18
04:00-04:20	8,18	14	23	10:00-10:20	6,05	8	18
04:20-04:40	10,1	18	25	10:20-10:40	7,83	11	18
04:40-05:00	7,95	11	25	10:40-11:00	6,35	8	23
05:00-05:20	6,24	11	12	11:00-11:20	7,88	14	21
05:20-05:40	6,63	8,5	14	11:20-11:40	6,55	11	14
05:40-06:00	8,04	11	21	11:40-12:00	6,88	11	18

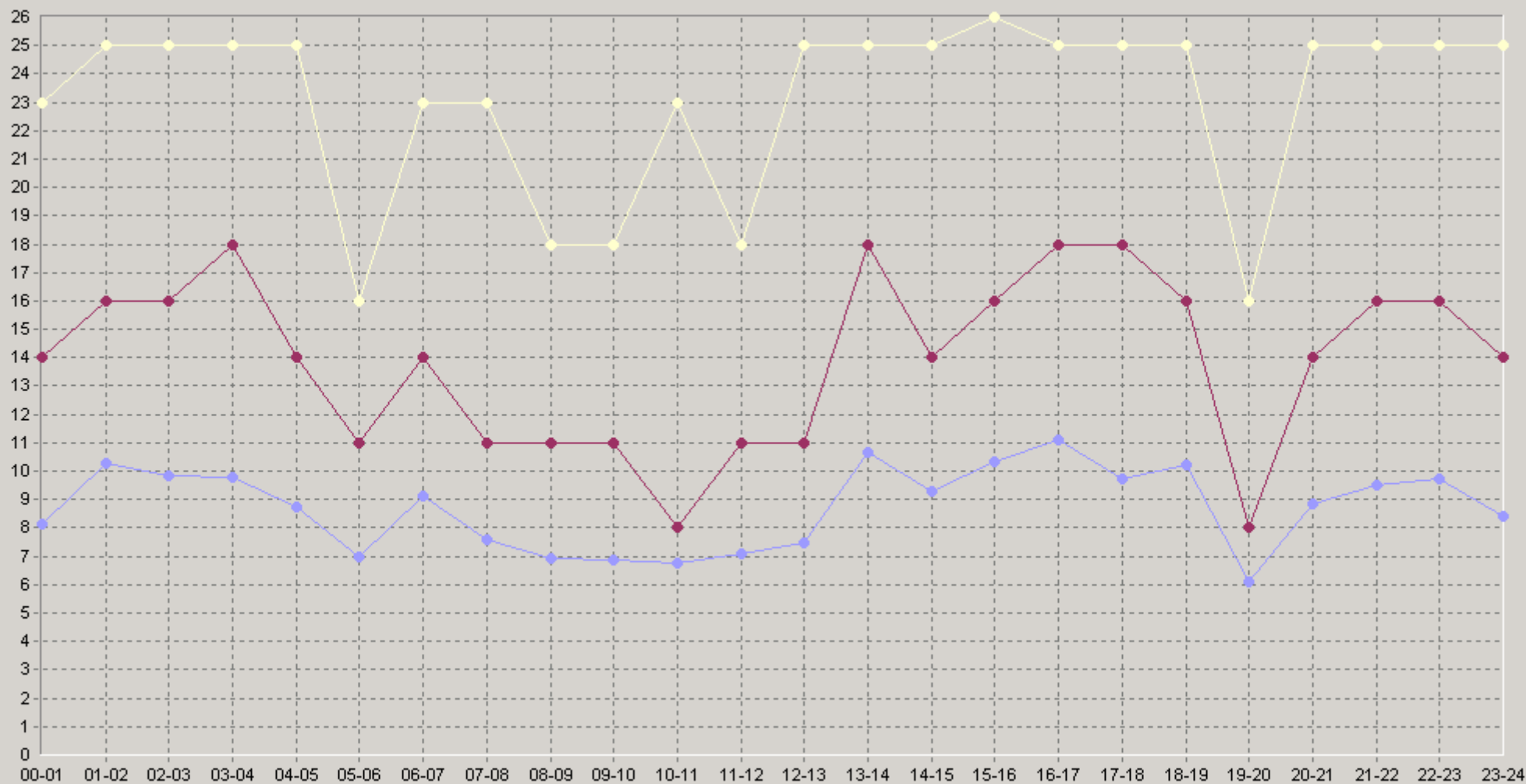
25.04.2008 17:20 - 27.04.2008 13:20

20 IP SLA G711u [10.0.3.252->62.61.7.2] ICMP

		75<	90<			75<	90<
12:00-12:20	6,93	8	25	18:00-18:20	11,8	21	25
12:20-12:40	7,8	14	25	18:20-18:40	8,93	14	26
12:40-13:00	7,75	11	18	18:40-19:00	9,89	16	25
13:00-13:20	10,7	16	25	19:00-19:20	6,6	8	18
13:20-13:40	11,9	18	25	19:20-19:40	4,6	6	14
13:40-14:00	9,45	19	25	19:40-20:00	7,18	8	21
14:00-14:20	9,3	14	23	20:00-20:20	7,7	11	21
14:20-14:40	8,2	11	21	20:20-20:40	10,2	14	25
14:40-15:00	10,6	18	25	20:40-21:00	8,68	14	25
15:00-15:20	7,6	11	25	21:00-21:20	10,1	16	23
15:20-15:40	16	26	26	21:20-21:40	11,2	18	25
15:40-16:00	7,45	11	16	21:40-22:00	7,2	11	25
16:00-16:20	10,1	16	18	22:00-22:20	10,3	16	23
16:20-16:40	14	25	26	22:20-22:40	10,2	16	25
16:40-17:00	9,2	21	25	22:40-23:00	8,64	13,5	25
17:00-17:20	10,9	16	18	23:00-23:20	8,03	13	25
17:20-17:40	10,6	18	25	23:20-23:40	8,69	16	25
17:40-18:00	8,28	14	25	23:40-00:00	8,48	14	25

25.04.2008 17:20 - 27.04.2008 13:20

60 IP SLA G711u [10.0.3.252->62.61.7.2] ICPIF

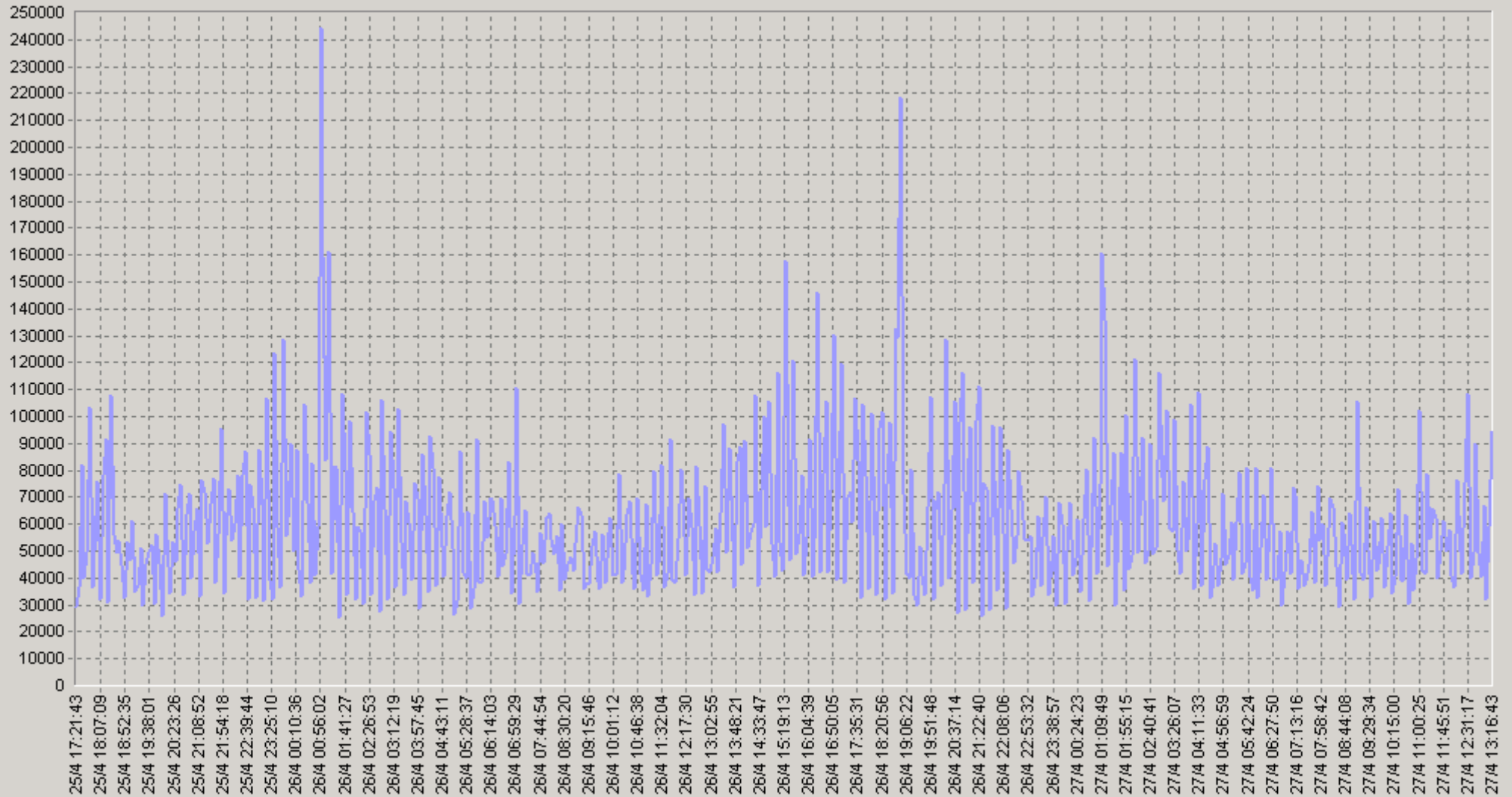


◆ [BaseLine Avg] IP SLA G711u [10.0.3.252->62.61.7.2] ICPIF(60)(SLA-ON-SERVER3)
 ◆ [BaseLine Percnt90 (<=)] IP SLA G711u [10.0.3.252->62.61.7.2] ICPIF(60)(SLA-ON-SERVER3)

◆ [BaseLine Percnt75 (<=)] IP SLA G711u [10.0.3.252->62.61.7.2] ICPIF(60)(SLA-ON-SERVER3)

25.04.2008 17:20 - 27.04.2008 13:20

IP SLA G711u [10.0.3.252->62.61.7.2] Delay (usec)



— IP SLA G711u [10.0.3.252->62.61.7.2] Delay (usec)(SLA-ON-SERVER3)

25.04.2008 17:20 - 27.04.2008 13:20

20 IP SLA G711u [10.0.3.252->62.61.7.2] Delay (usec)

		75<	90<			75<	90<
00:00-00:20	56 317	72 071	107 538	06:00-06:20	57 944	71 787	95 227
00:20-00:40	57 092	73 371	122 276	06:20-06:40	53 498	59 152	107 148
00:40-01:00	89 791	89 254	169 835	06:40-07:00	51 506	60 697	86 279
01:00-01:20	95 335	108 813	164 118	07:00-07:20	60 026	79 246	109 070
01:20-01:40	67 563	95 201	117 242	07:20-07:40	43 105	51 507	59 659
01:40-02:00	67 874	84 329	127 172	07:40-08:00	53 769	74 634	80 419
02:00-02:20	54 667	62 932	86 854	08:00-08:20	56 072	62 643	98 188
02:20-02:40	68 680	95 781	109 963	08:20-08:40	48 154	53 098	80 750
02:40-03:00	71 776	109 566	134 483	08:40-09:00	50 602	63 138	86 065
03:00-03:20	69 154	98 178	119 114	09:00-09:20	49 886	49 321	80 113
03:20-03:40	62 612	81 538	106 489	09:20-09:40	49 306	65 912	85 361
03:40-04:00	66 078	84 600	114 314	09:40-10:00	49 741	64 679	82 771
04:00-04:20	56 582	74 455	109 444	10:00-10:20	49 049	64 421	88 985
04:20-04:40	64 991	97 645	120 402	10:20-10:40	53 131	62 325	86 977
04:40-05:00	54 394	65 842	105 864	10:40-11:00	45 292	52 932	75 974
05:00-05:20	48 892	57 460	97 818	11:00-11:20	59 600	83 675	111 886
05:20-05:40	50 354	56 570	89 419	11:20-11:40	53 430	59 160	114 587
05:40-06:00	55 428	61 915	104 710	11:40-12:00	53 408	67 161	95 383

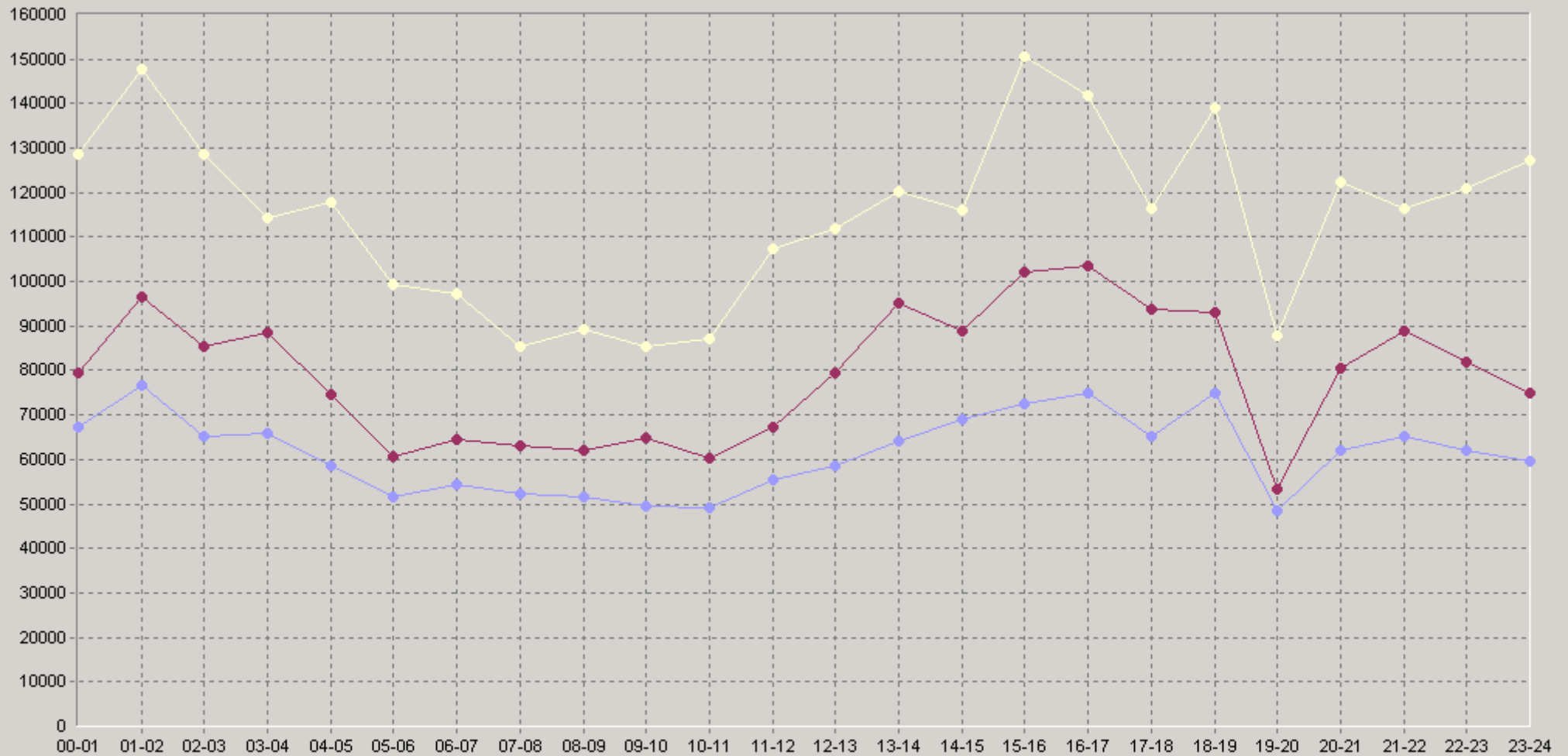
25.04.2008 17:20 - 27.04.2008 13:20

20 IP SLA G711u [10.0.3.252->62.61.7.2] Delay (usec)

		75<	90<			75<	90<
12:00-12:20	56 551	69 431	89 667	18:00-18:20	74 086	94 659	134 944
12:20-12:40	63 545	87 426	127 990	18:20-18:40	68 317	82 415	158 950
12:40-13:00	55 362	77 444	103 924	18:40-19:00	83 281	80 802	138 175
13:00-13:20	55 716	70 500	95 987	19:00-19:20	51 087	50 506	87 826
13:20-13:40	74 994	105 484	124 128	19:20-19:40	41 888	49 373	69 702
13:40-14:00	69 592	97 429	130 533	19:40-20:00	51 981	59 175	94 650
14:00-14:20	61 027	83 100	112 857	20:00-20:20	54 721	66 387	106 913
14:20-14:40	69 587	80 438	114 968	20:20-20:40	72 355	93 495	127 911
14:40-15:00	77 746	112 497	129 518	20:40-21:00	58 984	66 081	122 440
15:00-15:20	63 462	97 083	135 721	21:00-21:20	70 355	88 990	116 593
15:20-15:40	98 331	150 691	170 485	21:20-21:40	68 343	87 782	115 224
15:40-16:00	55 442	73 725	87 087	21:40-22:00	56 877	87 802	112 247
16:00-16:20	60 778	91 191	104 968	22:00-22:20	65 663	88 124	121 581
16:20-16:40	92 740	128 044	181 506	22:20-22:40	64 736	86 145	121 094
16:40-17:00	71 112	98 791	129 208	22:40-23:00	54 991	63 372	98 791
17:00-17:20	74 235	91 035	113 989	23:00-23:20	57 477	72 589	110 681
17:20-17:40	64 485	94 297	113 230	23:20-23:40	57 676	63 088	125 364
17:40-18:00	61 476	93 313	120 969	23:40-00:00	62 931	75 828	128 802

25.04.2008 17:20 - 27.04.2008 13:20

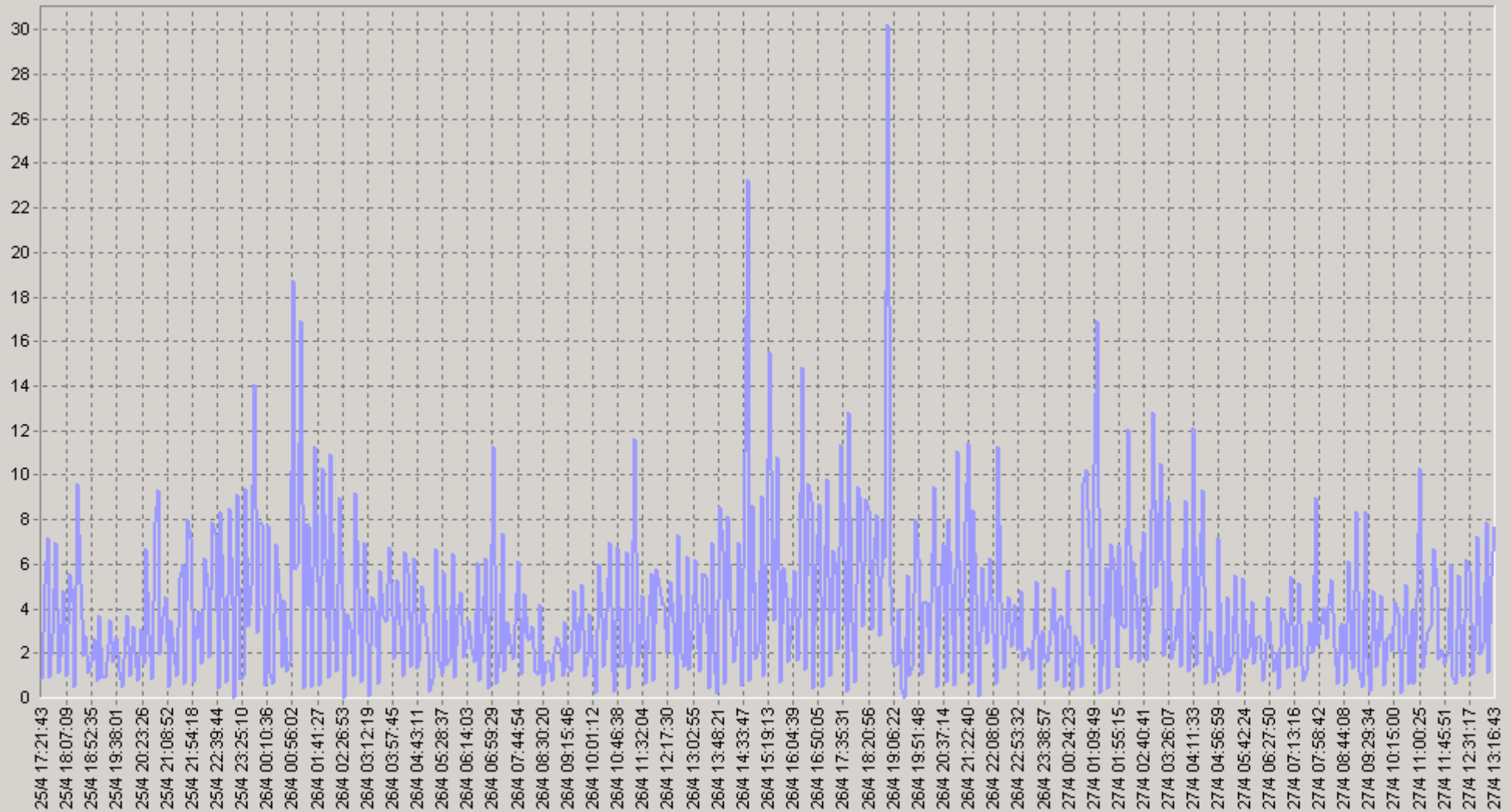
60 IP SLA G711u [10.0.3.252->62.61.7.2] Delay (usec)



◆ [BaseLine Avg] IP SLA G711u [10.0.3.252->62.61.7.2] Delay (usec)(60)(SLA-ON-SERVER3)
 ◆ [BaseLine Percnt75 (<=)] IP SLA G711u [10.0.3.252->62.61.7.2] Delay (usec)(60)(SLA-ON-SERVER3)
 ◆ [BaseLine Percnt90 (<=)] IP SLA G711u [10.0.3.252->62.61.7.2] Delay (usec)(60)(SLA-ON-SERVER3)

25.04.2008 17:20 - 27.04.2008 13:20

IP SLA G711u [10.0.3.252->62.61.7.2] Packet Loss (%)



— IP SLA G711u [10.0.3.252->62.61.7.2] Packet Loss (%)(SLA-ON-SERVER3)

25.04.2008 17:20 - 27.04.2008 13:20

2Q IP SLA G711u [10.0.3.252->62.61.7.2] Packet Loss (%)

		75<	90<			75<	90<
00:00-00:20	2,98	4	9	06:00-06:20	2,6	3	7
00:20-00:40	3,38	5	9	06:20-06:40	2,6	3	6
00:40-01:00	6,18	4	18	06:40-07:00	3,28	5	10
01:00-01:20	7,21	11	24,5	07:00-07:20	4,13	5	12
01:20-01:40	4,85	5	11	07:20-07:40	2,25	2	8
01:40-02:00	5,1	8	13	07:40-08:00	3,9	5	11
02:00-02:20	4,78	6	15	08:00-08:20	3,03	3	10
02:20-02:40	4,45	8	11	08:20-08:40	2,35	3	6
02:40-03:00	5,5	10	12	08:40-09:00	2,33	3	6
03:00-03:20	4,15	6	8	09:00-09:20	2,45	2	7
03:20-03:40	3,97	7	9	09:20-09:40	3,28	5	11
03:40-04:00	4,5	8	11	09:40-10:00	2,5	4	7
04:00-04:20	3,63	5	8	10:00-10:20	2,9	4	9
04:20-04:40	4,63	7	13	10:20-10:40	3,1	4	7
04:40-05:00	2,95	4	8	10:40-11:00	2,68	3	8
05:00-05:20	2,25	2	4	11:00-11:20	4,48	6	14
05:20-05:40	2,37	3	6	11:20-11:40	3,15	4	10
05:40-06:00	3,29	4	7	11:40-12:00	3,45	4	11

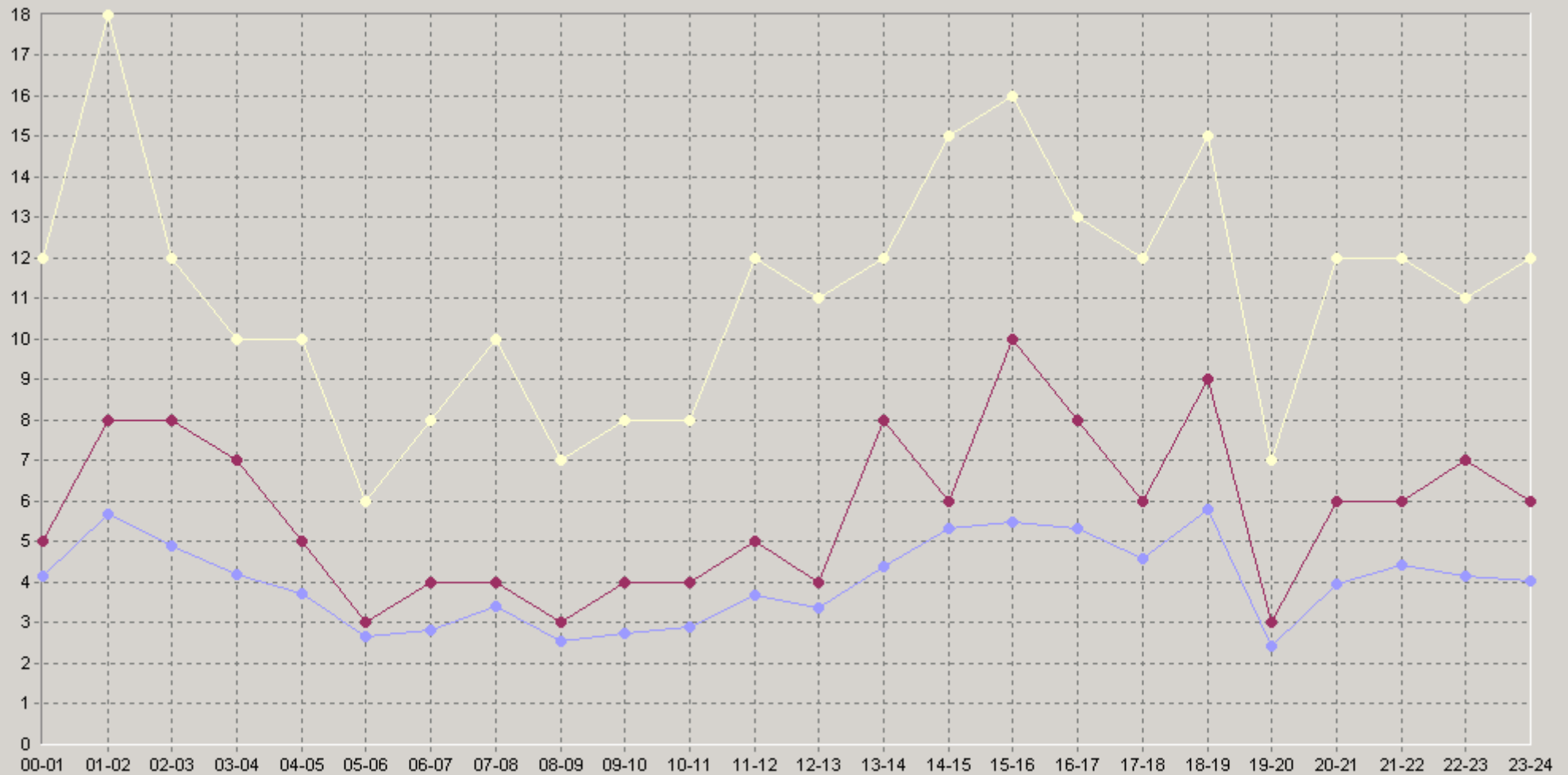
25.04.2008 17:20 - 27.04.2008 13:20

20 IP SLA G711u [10.0.3.252->62.61.7.2] Packet Loss (%)

		75<	90<			75<	90<
12:00-12:20	2,95	4	6	18:00-18:20	5,8	9	13
12:20-12:40	3,8	6	13	18:20-18:40	5,4	9	17
12:40-13:00	3,33	4	8	18:40-19:00	6,26	5	14
13:00-13:20	4,28	7	10	19:00-19:20	2,18	2	6
13:20-13:40	4,6	8	10	19:20-19:40	2,15	3	6
13:40-14:00	4,35	5	12	19:40-20:00	2,95	3	9
14:00-14:20	3,55	4	8	20:00-20:20	3,05	4	7
14:20-14:40	5,45	6	19	20:20-20:40	4,5	6	13
14:40-15:00	7,35	9	15	20:40-21:00	4,3	7	12
15:00-15:20	4,65	7	14	21:00-21:20	4,85	6	13
15:20-15:40	8,7	15	18	21:20-21:40	4,9	6	11
15:40-16:00	3,1	5	6	21:40-22:00	3,6	6	12
16:00-16:20	3,55	5	6	22:00-22:20	4,65	7	10
16:20-16:40	8,6	13	22	22:20-22:40	4,28	7	13
16:40-17:00	3,9	8	10	22:40-23:00	3,51	5	10
17:00-17:20	5,35	6	9	23:00-23:20	3,36	4	9
17:20-17:40	5	7	13	23:20-23:40	3,28	6	10
17:40-18:00	3,8	4	9	23:40-00:00	5,38	7	14

25.04.2008 17:20 - 27.04.2008 13:20

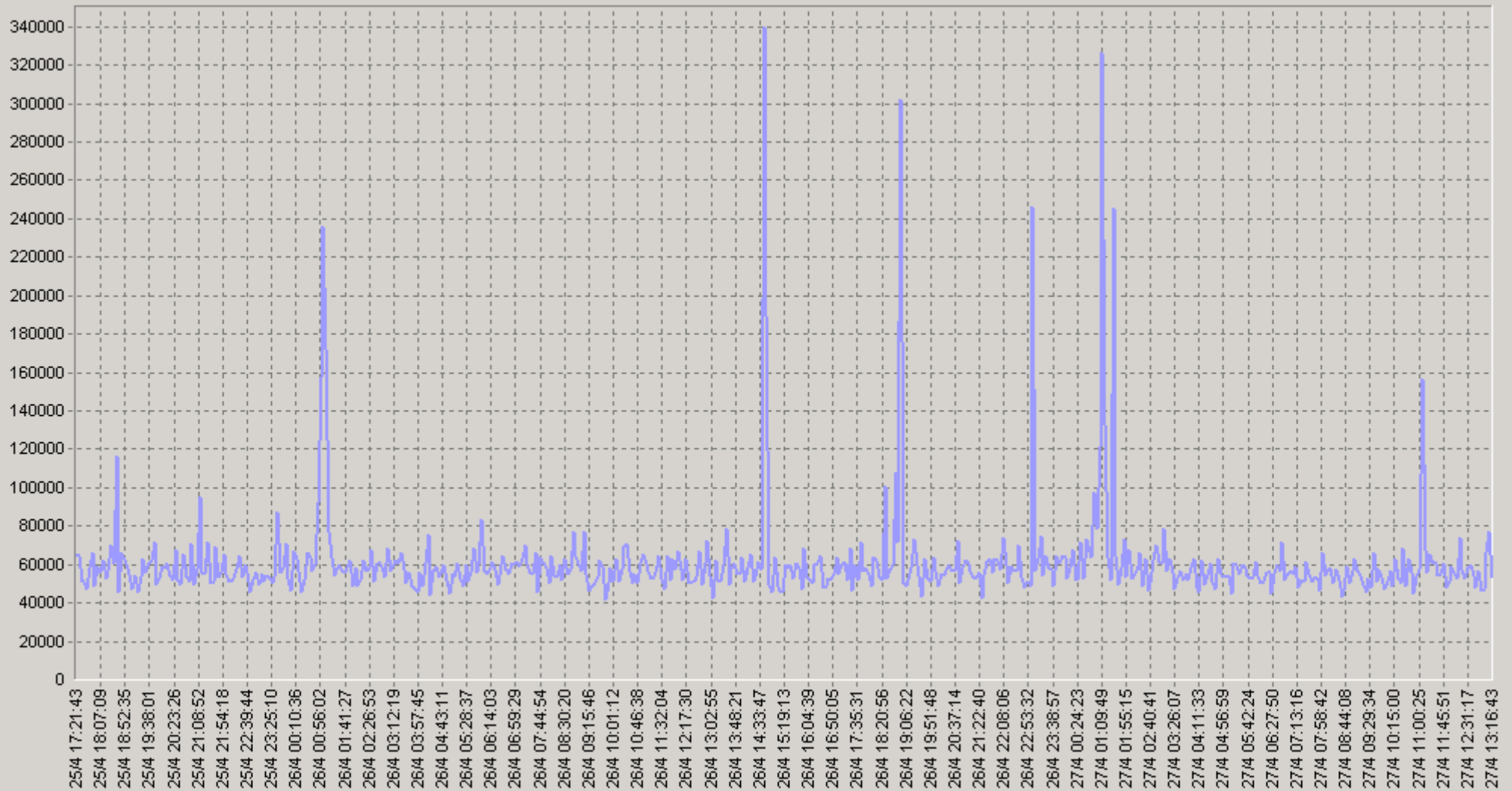
60 IP SLA G711u [10.0.3.252->62.61.7.2] PacketLoss (%)



◆ [BaseLine Avg] IP SLA G711u [10.0.3.252->62.61.7.2] Packet Loss (%) (60)(SLA-ON-SERVER3)
 ◆ [BaseLine Percnt75 (<=)] IP SLA G711u [10.0.3.252->62.61.7.2] Packet Loss (%) (60)(SLA-ON-SERVER3)
 ◆ [BaseLine Percnt90 (<=)] IP SLA G711u [10.0.3.252->62.61.7.2] Packet Loss (%) (60)(SLA-ON-SERVER3)

25.04.2008 17:20 - 27.04.2008 13:20

IP SLA G711u [10.0.3.252->62.61.7.2] Jitter (usec)



— IP SLA G711u [10.0.3.252->62.61.7.2] Jitter (usec)(SLA-ON-SERVER3)

25.04.2008 17:20 - 27.04.2008 13:20

20: IP SLA G711u [10.0.3.252->62.61.7.2] Jitter (usec)

		75<	90<			75<	90<
00:00-00:20	59 324	65 296	82 833	06:00-06:20	55 738	63 600	67 833
00:20-00:40	57 078	64 321	73 917	06:20-06:40	55 704	63 467	78 667
00:40-01:00	85 735	83 500	141 333	06:40-07:00	58 484	64 947	78 154
01:00-01:20	142 477	194 500	225 556	07:00-07:20	58 727	65 722	78 550
01:20-01:40	77 467	65 385	73 400	07:20-07:40	56 991	60 900	75 571
01:40-02:00	57 191	59 304	67 964	07:40-08:00	53 901	56 065	64 786
02:00-02:20	56 972	64 647	74 067	08:00-08:20	57 220	67 400	72 308
02:20-02:40	56 941	62 842	73 857	08:20-08:40	53 987	59 500	73 412
02:40-03:00	59 885	70 720	77 308	08:40-09:00	59 444	66 889	79 538
03:00-03:20	62 731	66 577	78 500	09:00-09:20	56 795	60 296	93 389
03:20-03:40	55 912	59 733	75 833	09:20-09:40	53 367	57 083	64 909
03:40-04:00	52 173	58 033	67 636	09:40-10:00	52 219	58 538	70 500
04:00-04:20	57 432	62 714	73 000	10:00-10:20	55 342	58 400	73 286
04:20-04:40	53 276	60 724	71 565	10:20-10:40	58 290	63 846	78 600
04:40-05:00	54 267	62 923	76 222	10:40-11:00	56 224	66 000	71 813
05:00-05:20	54 338	58 667	62 563	11:00-11:20	70 258	65 478	79 154
05:20-05:40	56 272	60 733	72 905	11:20-11:40	58 422	66 300	80 053
05:40-06:00	60 687	66 909	72 583	11:40-12:00	55 824	59 053	73 316

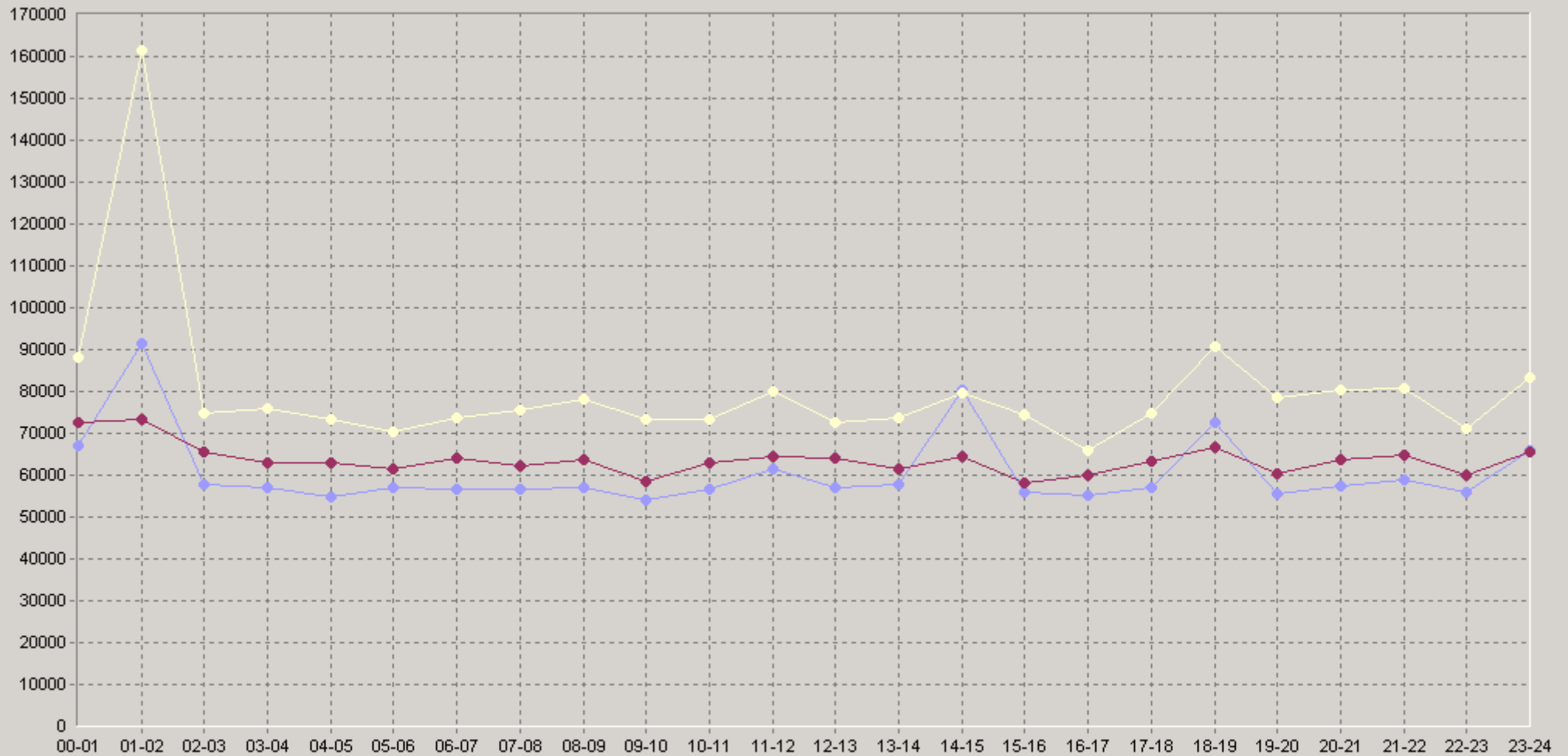
25.04.2008 17:20 - 27.04.2008 13:20

20 IP SLA G711u [10.0.3.252->62.61.7.2] Jitter (usec)

		75<	90<			75<	90<
12:00-12:20	59 972	69 857	84 250	18:00-18:20	57 523	62 529	73 542
12:20-12:40	54 363	62 533	65 308	18:20-18:40	70 475	67 538	84 882
12:40-13:00	56 441	59 724	71 333	18:40-19:00	91 141	67 423	105 333
13:00-13:20	56 956	59 296	68 765	19:00-19:20	51 134	54 684	59 619
13:20-13:40	59 809	65 923	79 700	19:20-19:40	57 460	66 636	79 857
13:40-14:00	57 120	61 774	70 800	19:40-20:00	58 210	64 310	83 923
14:00-14:20	59 553	64 375	76 750	20:00-20:20	55 472	63 200	77 167
14:20-14:40	55 808	62 583	70 840	20:20-20:40	56 129	63 577	68 222
14:40-15:00	133 263	60 032	284 643	20:40-21:00	60 831	70 222	87 714
15:00-15:20	51 162	54 032	58 074	21:00-21:20	60 129	66 333	87 500
15:20-15:40	57 757	59 346	72 857	21:20-21:40	55 091	60 241	72 563
15:40-16:00	58 689	59 474	80 455	21:40-22:00	61 303	69 091	79 765
16:00-16:20	53 860	58 500	62 846	22:00-22:20	56 391	61 786	67 786
16:20-16:40	55 177	59 727	73 231	22:20-22:40	60 116	65 097	75 833
16:40-17:00	55 991	60 476	65 950	22:40-23:00	50 541	53 130	59 250
17:00-17:20	56 830	68 273	74 133	23:00-23:20	79 316	63 563	99 500
17:20-17:40	56 689	62 250	70 593	23:20-23:40	59 718	61 409	83 238
17:40-18:00	57 745	62 750	83 000	23:40-00:00	59 698	68 933	76 833

25.04.2008 17:20 - 27.04.2008 13:20

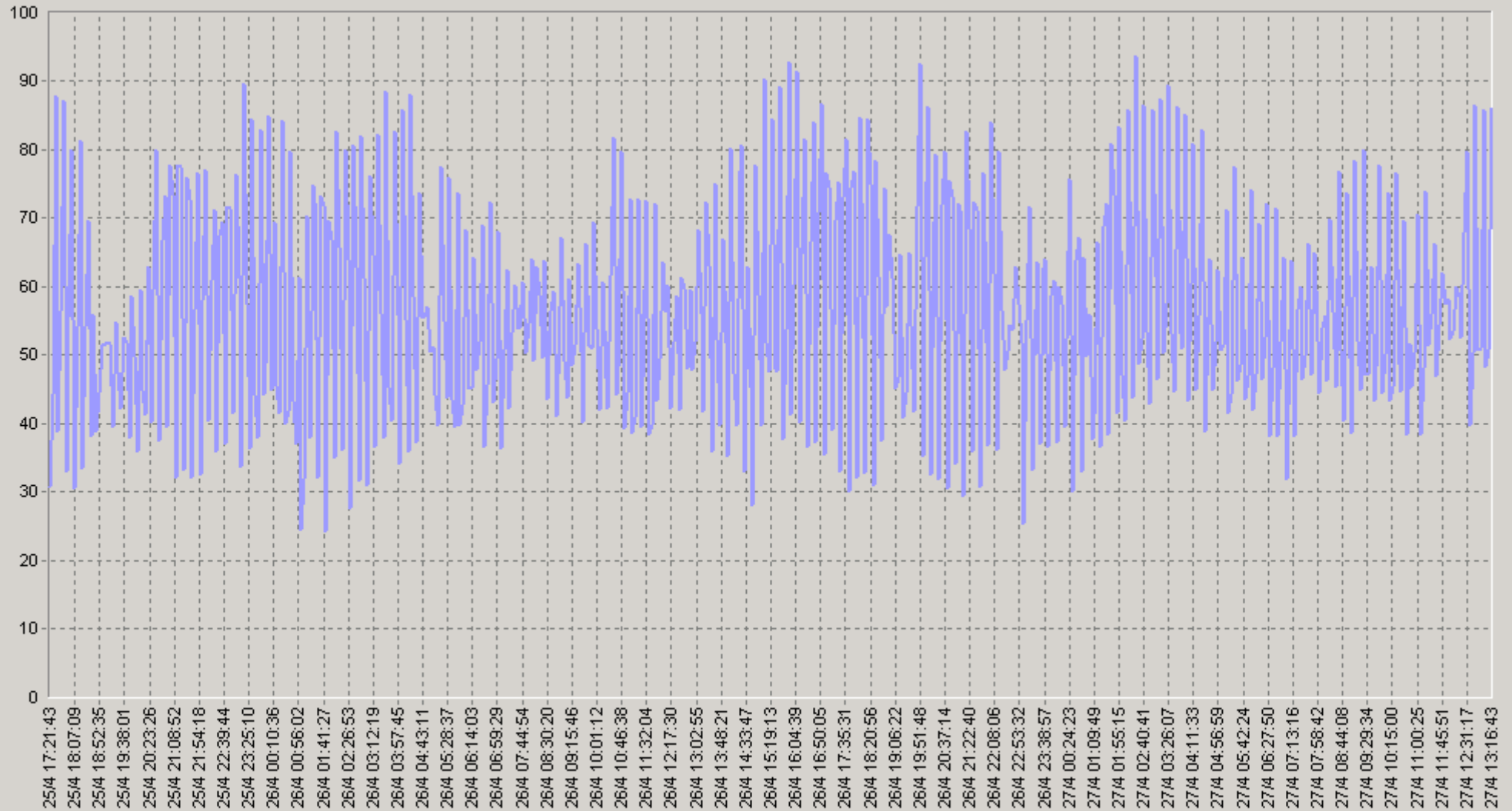
60 IP SLA G711u [10.0.3.252->62.61.7.2] Jitter (usec)



◆ [BaseLine Avg] IP SLA G711u [10.0.3.252->62.61.7.2] Jitter (usec)(60)(SLA-ON-SERVER3)
 ◆ [BaseLine Percnt75 (<=)] IP SLA G711u [10.0.3.252->62.61.7.2] Jitter (usec)(60)(SLA-ON-SERVER3)
 ◆ [BaseLine Percnt90 (<=)] IP SLA G711u [10.0.3.252->62.61.7.2] Jitter (usec)(60)(SLA-ON-SERVER3)

25.04.2008 17:20 - 27.04.2008 13:20

IP SLA G711u [10.0.3.252->62.61.7.2] The Number of Round Trip Operations



IP SLA G711u [10.0.3.252->62.61.7.2] The Number of Round Trip Operations(SLA-ON-SERVER3)

25.04.2008 17:20 - 27.04.2008 13:20

2Q IP SLA G711u [10.0.3.252->62.61.7.2] The Number of Round Trip Operations

		75>	90>			75>	90>
00:00-00:20	54,2	36	30	06:00-06:20	53,8	43	29
00:20-00:40	55,7	38	29	06:20-06:40	52,2	37	27
00:40-01:00	53,8	37	30	06:40-07:00	54	37	33
01:00-01:20	45,2	26	16	07:00-07:20	50,8	33	30
01:20-01:40	59,3	36	28	07:20-07:40	53,5	39	32
01:40-02:00	63,3	35	28	07:40-08:00	56,3	40	30
02:00-02:20	56,6	36	29	08:00-08:20	54,5	39	35
02:20-02:40	62,3	37	27	08:20-08:40	58,6	40	36
02:40-03:00	62,5	35	30	08:40-09:00	52,7	36	29
03:00-03:20	57,6	34	27	09:00-09:20	52,5	36	34
03:20-03:40	63,6	35	28	09:20-09:40	55,6	40	33
03:40-04:00	62,6	39	32	09:40-10:00	56,5	40	37
04:00-04:20	54,5	37	27	10:00-10:20	52,1	39	32
04:20-04:40	60,3	34	30	10:20-10:40	58,5	43	32
04:40-05:00	55,9	43	35	10:40-11:00	50,2	37	32
05:00-05:20	53,4	38	31,5	11:00-11:20	56,4	36	29
05:20-05:40	53,8	38	34	11:20-11:40	52,1	37	32
05:40-06:00	53,4	38	33	11:40-12:00	54,8	39	33

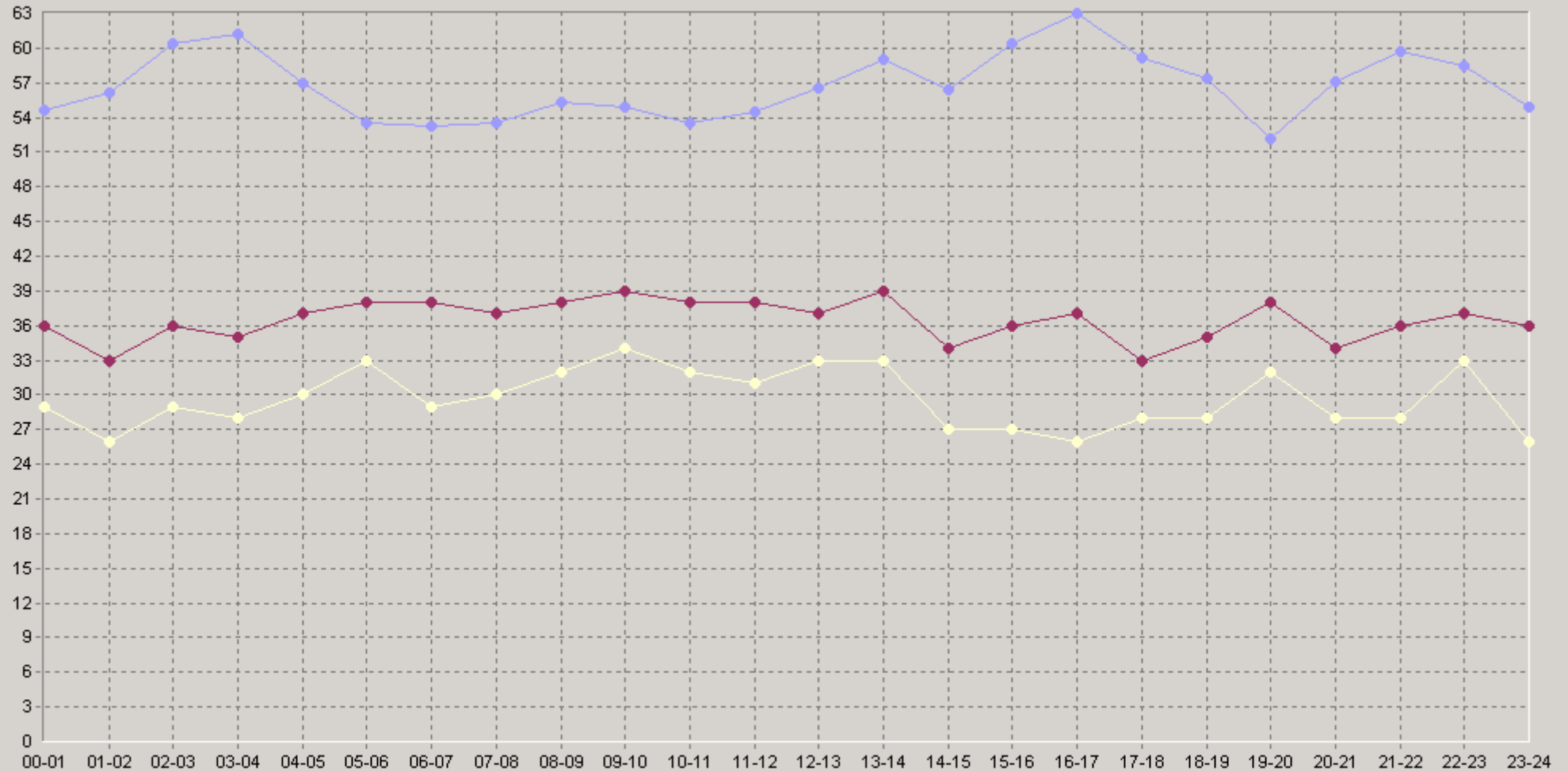
25.04.2008 17:20 - 27.04.2008 13:20

2Q IP SLA G711u [10.0.3.252->62.61.7.2] The Number of Round Trip Operations

		75>	90>			75>	90>
12:00-12:20	55,8	38	33	18:00-18:20	64,6	38	29
12:20-12:40	56,7	38	33	18:20-18:40	55,6	35	28
12:40-13:00	57,3	37	33	18:40-19:00	51,9	33	23
13:00-13:20	61	42	33	19:00-19:20	51,6	41	37
13:20-13:40	61,7	36	33	19:20-19:40	50,7	39	32
13:40-14:00	52,7	36	28	19:40-20:00	54,4	35	29
14:00-14:20	50,7	35	29	20:00-20:20	54,7	37	28
14:20-14:40	63,5	40	34	20:20-20:40	63,2	41	26
14:40-15:00	54,6	28	17	20:40-21:00	53,4	31	28
15:00-15:20	57,6	36	28	21:00-21:20	65,8	45	31
15:20-15:40	67,3	47	27	21:20-21:40	62,5	40	31
15:40-16:00	56,2	31	23	21:40-22:00	50,7	30	26
16:00-16:20	64,5	39	28	22:00-22:20	63,6	40	33
16:20-16:40	67,1	47	26	22:20-22:40	55,5	38	30
16:40-17:00	57,4	31	23	22:40-23:00	56	36	33
17:00-17:20	65,4	37	34	23:00-23:20	56,5	34	22
17:20-17:40	58,7	32	27	23:20-23:40	53,6	32	26
17:40-18:00	56,4	30	27	23:40-00:00	54,9	42	30

25.04.2008 17:20 - 27.04.2008 13:20

60 IP SLA G711u [10.0.3.252->62.61.7.2] The Number of Round Trip Operations



◆ [BaseLine Avg] IP SLA G711u [10.0.3.252->62.61.7.2] The Number of Round Trip Operations(60)(SLA-ON-SERVER3)
 ◆ [BaseLine Percnt75 (>=)] IP SLA G711u [10.0.3.252->62.61.7.2] The Number of Round Trip Operations(60)(SLA-ON-SERVER3)
 ◆ [BaseLine Percnt90 (>=)] IP SLA G711u [10.0.3.252->62.61.7.2] The Number of Round Trip Operations(60)(SLA-ON-SERVER3)