

17.04.2008 18:55 - 18.04.2008 17:53

UDP-



VoIP-link calibratingWorstUDP Jitter (ms)	<=10 100%	>10 0%	>20 0%	>40 0%	>500 0%	1002
VoIP-link calibratingWorstUDP PacketLoss (%)	<=0,5 100%	>0,5 0%	>1 0%	>2 0%	>10 0%	1002
VoIP-link calibratingWorstUDP Round Trip Delay (ms)	<=50 100%	>50 0%	>100 0%	>150 0%	>400 0%	1002
UDP- ()	100%	100%	100%	100%		1002

(2)

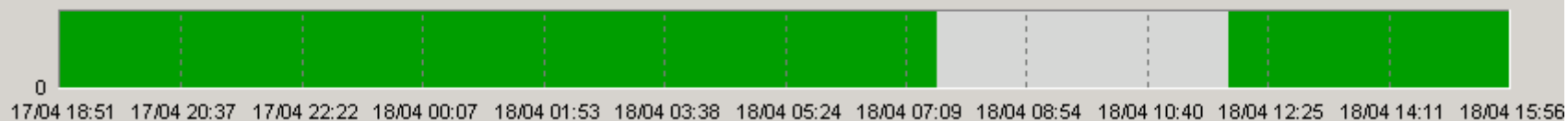
ProLAN

ProLAN.

PROLAN,

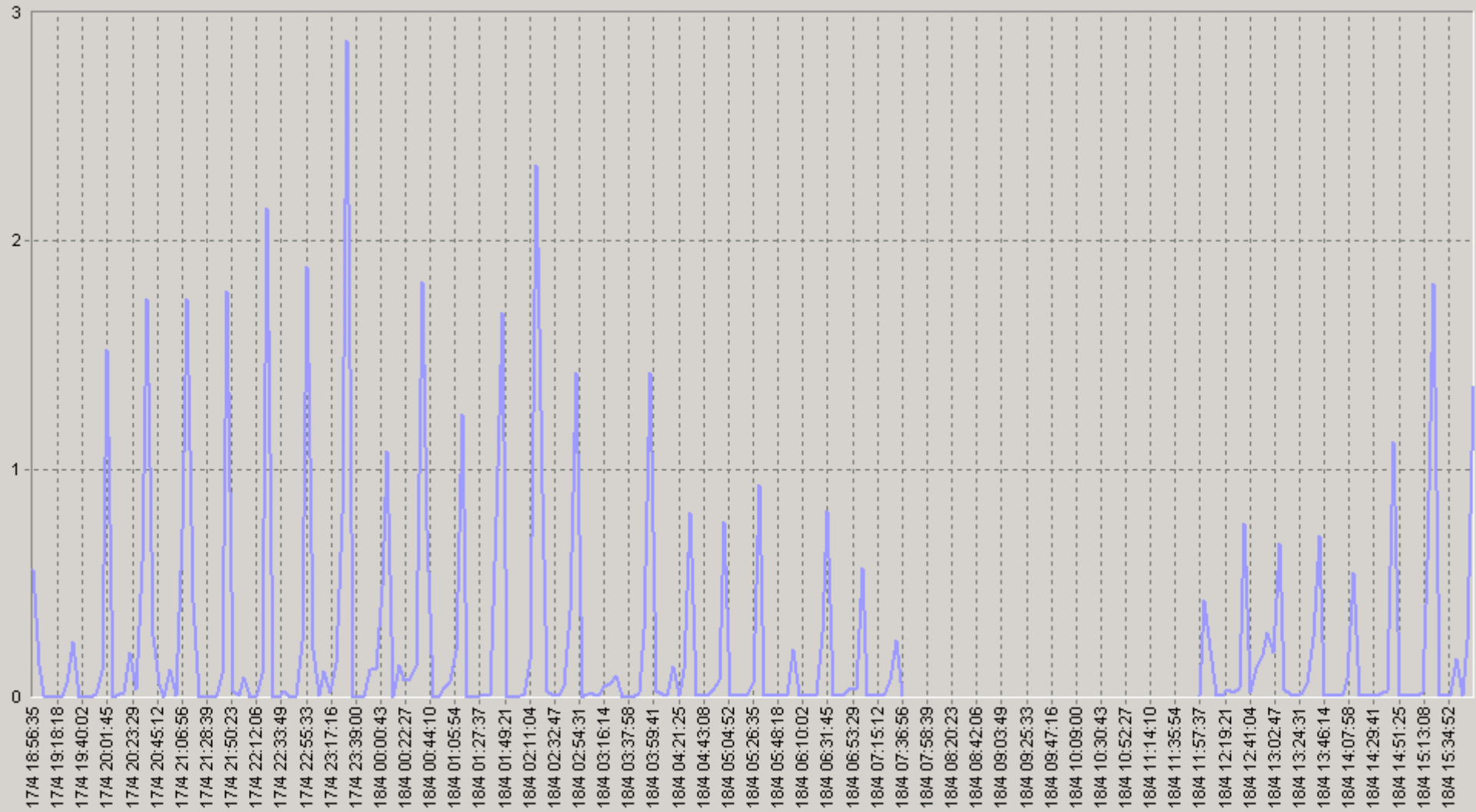
PROLAN
PARTNER@PROLAN.RU

« »



17.04.2008 18:55 - 18.04.2008 17:53

VoIP-link calibrating\Worst UDP Jitter (ms)



— VoIP-link calibrating\Worst UDP Jitter (ms)(23811:SLA-ON-SERVER3)

17.04.2008 18:55 - 18.04.2008 17:53

2Q. VoIP-link calibrating\Worst UDP Jitter (ms)

		75<	90<			75<	90<
00:00-00:20	0,43	0,02	0,95	06:00-06:20	0,06	0,01	0,01
00:20-00:40	0,59	0,38	2,04	06:20-06:40	0,28	0,01	0,69
00:40-01:00	0,14	0	0,05	06:40-07:00	0,02	0,01	0,03
01:00-01:20	0,37	0,5	0,92	07:00-07:20	0,14	0,01	0,01
01:20-01:40	0	0	0,01	07:20-07:40	0,1	0,01	0,34
01:40-02:00	0,62	0,04	1,85	07:40-08:00	n/a	n/a	n/a
02:00-02:20	0,85	1,37	2,18	08:00-08:20	n/a	n/a	n/a
02:20-02:40	0,01	0	0,03	08:20-08:40	n/a	n/a	n/a
02:40-03:00	0,46	1,15	1,6	08:40-09:00	n/a	n/a	n/a
03:00-03:20	0,03	0,03	0,08	09:00-09:20	n/a	n/a	n/a
03:20-03:40	0,03	0	0,09	09:20-09:40	n/a	n/a	n/a
03:40-04:00	0,44	0,17	1,26	09:40-10:00	n/a	n/a	n/a
04:00-04:20	0,04	0,01	0,03	10:00-10:20	n/a	n/a	n/a
04:20-04:40	0,24	0,01	0,22	10:20-10:40	n/a	n/a	n/a
04:40-05:00	0,03	0,01	0,01	10:40-11:00	n/a	n/a	n/a
05:00-05:20	0,2	0,01	0,01	11:00-11:20	n/a	n/a	n/a
05:20-05:40	0,25	0,01	0,88	11:20-11:40	n/a	n/a	n/a
05:40-06:00	0,01	0,01	0,01	11:40-12:00	0,01	0,01	0,01

17.04.2008 18:55 - 18.04.2008 17:53

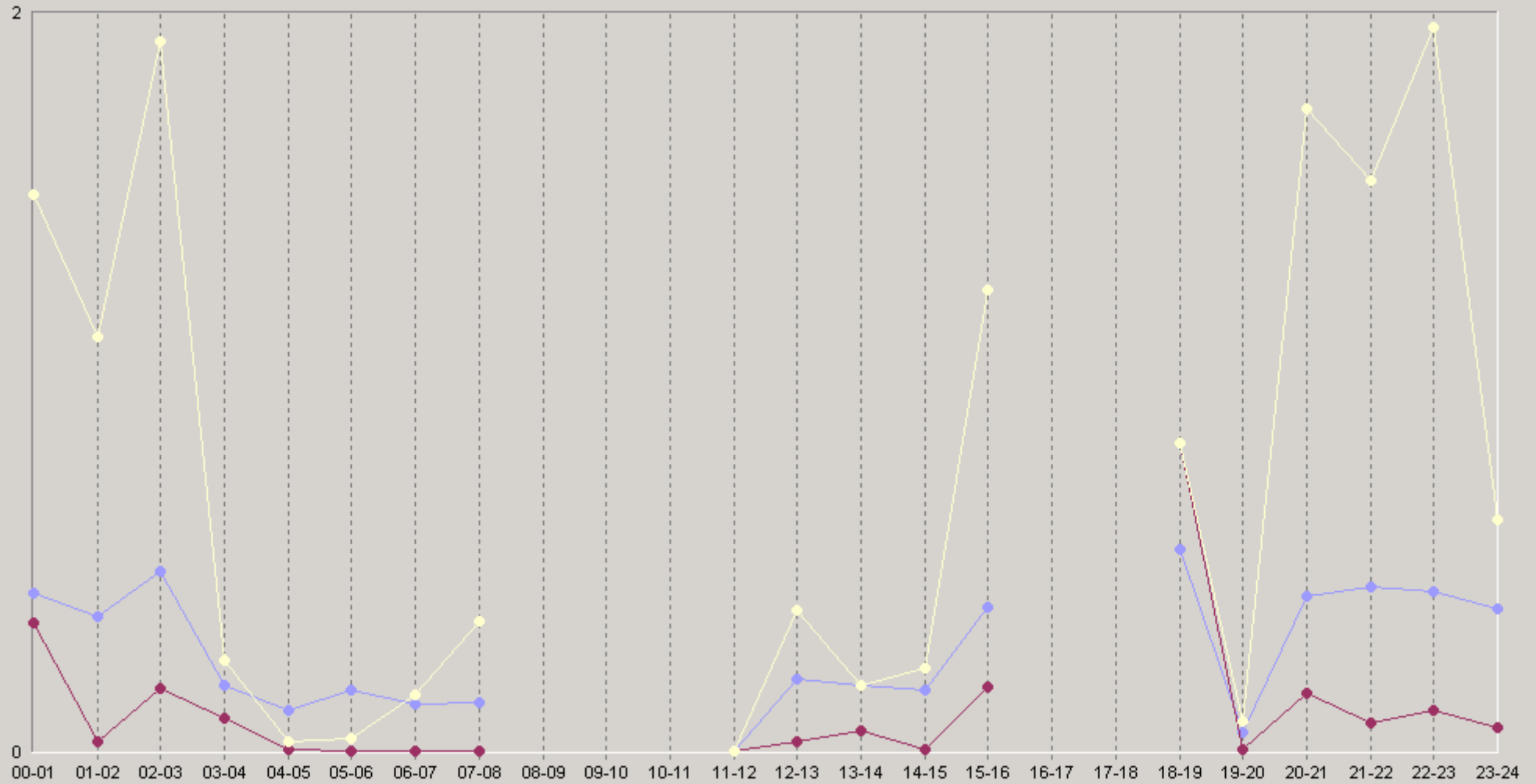
20. VoIP-link calibrating\Worst UDP Jitter (ms)

		75<	90<			75<	90<
12:00-12:20	0,16	0,01	0,08	18:00-18:20	n/a	n/a	n/a
12:20-12:40	0,21	0,01	0,21	18:20-18:40	n/a	n/a	n/a
12:40-13:00	0,16	0,35	0,48	18:40-19:00	0,49	0,76	0,76
13:00-13:20	0,22	0,13	0,38	19:00-19:20	0,04	0,01	0,04
13:20-13:40	0,1	0,05	0,16	19:20-19:40	0,08	0,02	0,26
13:40-14:00	0,17	0,01	0,01	19:40-20:00	0,03	0	0,07
14:00-14:20	0,16	0,01	0,37	20:00-20:20	0,39	0	0,26
14:20-14:40	0,01	0,01	0,01	20:20-20:40	0,7	1,17	2,09
14:40-15:00	0,29	0,01	0,21	20:40-21:00	0,06	0	0
15:00-15:20	0,19	0,03	0,71	21:00-21:20	0,73	1,16	2,37
15:20-15:40	0,43	0,01	1,13	21:20-21:40	0	0	0
15:40-16:00	0,45	0,43	0,84	21:40-22:00	0,48	0,07	1,77
16:00-16:20	n/a	n/a	n/a	22:00-22:20	0,07	0	0,1
16:20-16:40	n/a	n/a	n/a	22:20-22:40	0,52	0,01	2,07
16:40-17:00	n/a	n/a	n/a	22:40-23:00	0,59	0,84	1,76
17:00-17:20	n/a	n/a	n/a	23:00-23:20	0,04	0,01	0,06
17:20-17:40	n/a	n/a	n/a	23:20-23:40	0,96	0,57	1,82
17:40-18:00	n/a	n/a	n/a	23:40-00:00	0,06	0	0,23

UDP-

17.04.2008 18:55 - 18.04.2008 17:53

6Q VoIP-link calibrating\Worst UDP Jitter (ms)



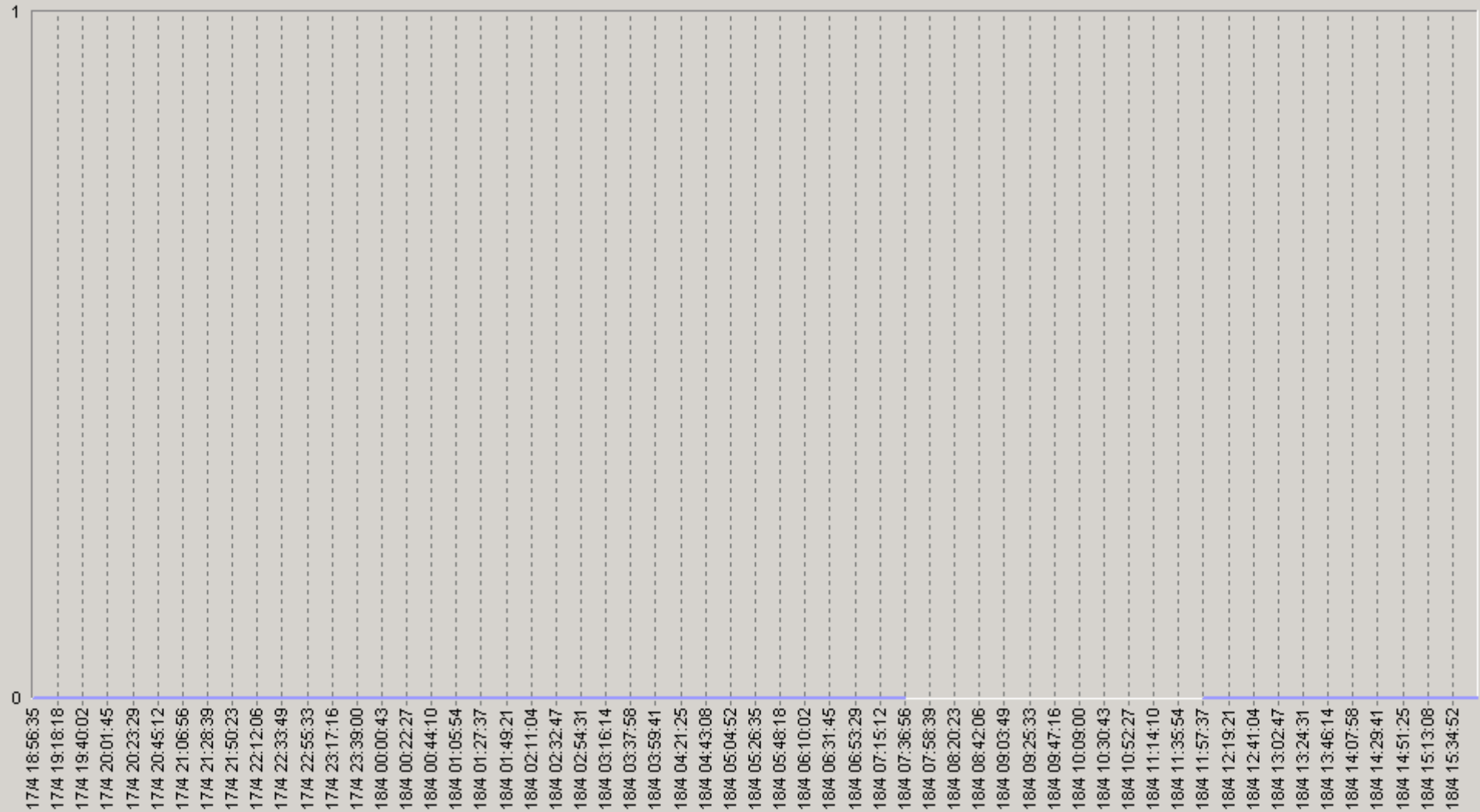
◆ [BaseLine Avg] VoIP-link calibrating\Worst UDP Jitter (ms)(60)(23811:SLA-ON-SERVER3)

◆ [BaseLine Percnt75 (<=)] VoIP-link calibrating\Worst UDP Jitter (ms)(60)(23811:SLA-ON-SERVER3)

◆ [BaseLine Percnt90 (<=)] VoIP-link calibrating\Worst UDP Jitter (ms)(60)(23811:SLA-ON-SERVER3)

17.04.2008 18:55 - 18.04.2008 17:53

VoIP-link calibrating\Worst UDP Packet Loss (%)



— VoIP-link calibrating\Worst UDP Packet Loss (%) (23811:SLA-ON-SERVER3)

17.04.2008 18:55 - 18.04.2008 17:53

20: VoIP-link calibrating\Worst UDP Packet Loss (%)

		75<	90<			75<	90<
00:00-00:20	0	0	0	06:00-06:20	0	0	0
00:20-00:40	0	0	0	06:20-06:40	0	0	0
00:40-01:00	0	0	0	06:40-07:00	0	0	0
01:00-01:20	0	0	0	07:00-07:20	0	0	0
01:20-01:40	0	0	0	07:20-07:40	0	0	0
01:40-02:00	0	0	0	07:40-08:00	n/a	n/a	n/a
02:00-02:20	0	0	0	08:00-08:20	n/a	n/a	n/a
02:20-02:40	0	0	0	08:20-08:40	n/a	n/a	n/a
02:40-03:00	0	0	0	08:40-09:00	n/a	n/a	n/a
03:00-03:20	0	0	0	09:00-09:20	n/a	n/a	n/a
03:20-03:40	0	0	0	09:20-09:40	n/a	n/a	n/a
03:40-04:00	0	0	0	09:40-10:00	n/a	n/a	n/a
04:00-04:20	0	0	0	10:00-10:20	n/a	n/a	n/a
04:20-04:40	0	0	0	10:20-10:40	n/a	n/a	n/a
04:40-05:00	0	0	0	10:40-11:00	n/a	n/a	n/a
05:00-05:20	0	0	0	11:00-11:20	n/a	n/a	n/a
05:20-05:40	0	0	0	11:20-11:40	n/a	n/a	n/a
05:40-06:00	0	0	0	11:40-12:00	0	0	0

17.04.2008 18:55 - 18.04.2008 17:53

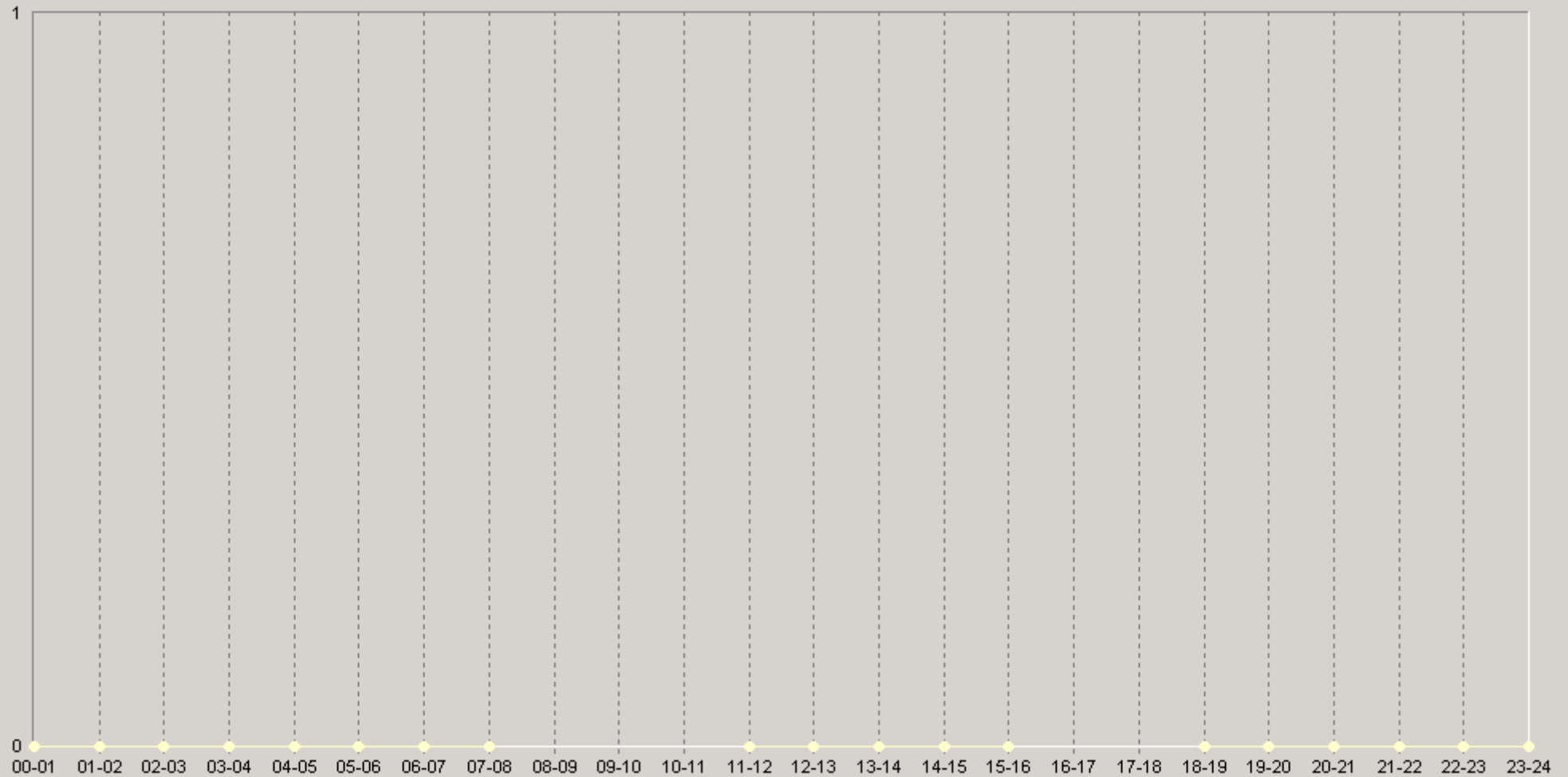
20: VoIP-link calibrating\Worst UDP Packet Loss (%)

		75<	90<			75<	90<
12:00-12:20	0	0	0	18:00-18:20	n/a	n/a	n/a
12:20-12:40	0	0	0	18:20-18:40	n/a	n/a	n/a
12:40-13:00	0	0	0	18:40-19:00	0	0	0
13:00-13:20	0	0	0	19:00-19:20	0	0	0
13:20-13:40	0	0	0	19:20-19:40	0	0	0
13:40-14:00	0	0	0	19:40-20:00	0	0	0
14:00-14:20	0	0	0	20:00-20:20	0	0	0
14:20-14:40	0	0	0	20:20-20:40	0	0	0
14:40-15:00	0	0	0	20:40-21:00	0	0	0
15:00-15:20	0	0	0	21:00-21:20	0	0	0
15:20-15:40	0	0	0	21:20-21:40	0	0	0
15:40-16:00	0	0	0	21:40-22:00	0	0	0
16:00-16:20	n/a	n/a	n/a	22:00-22:20	0	0	0
16:20-16:40	n/a	n/a	n/a	22:20-22:40	0	0	0
16:40-17:00	n/a	n/a	n/a	22:40-23:00	0	0	0
17:00-17:20	n/a	n/a	n/a	23:00-23:20	0	0	0
17:20-17:40	n/a	n/a	n/a	23:20-23:40	0	0	0
17:40-18:00	n/a	n/a	n/a	23:40-00:00	0	0	0

UDP-

17.04.2008 18:55 - 18.04.2008 17:53

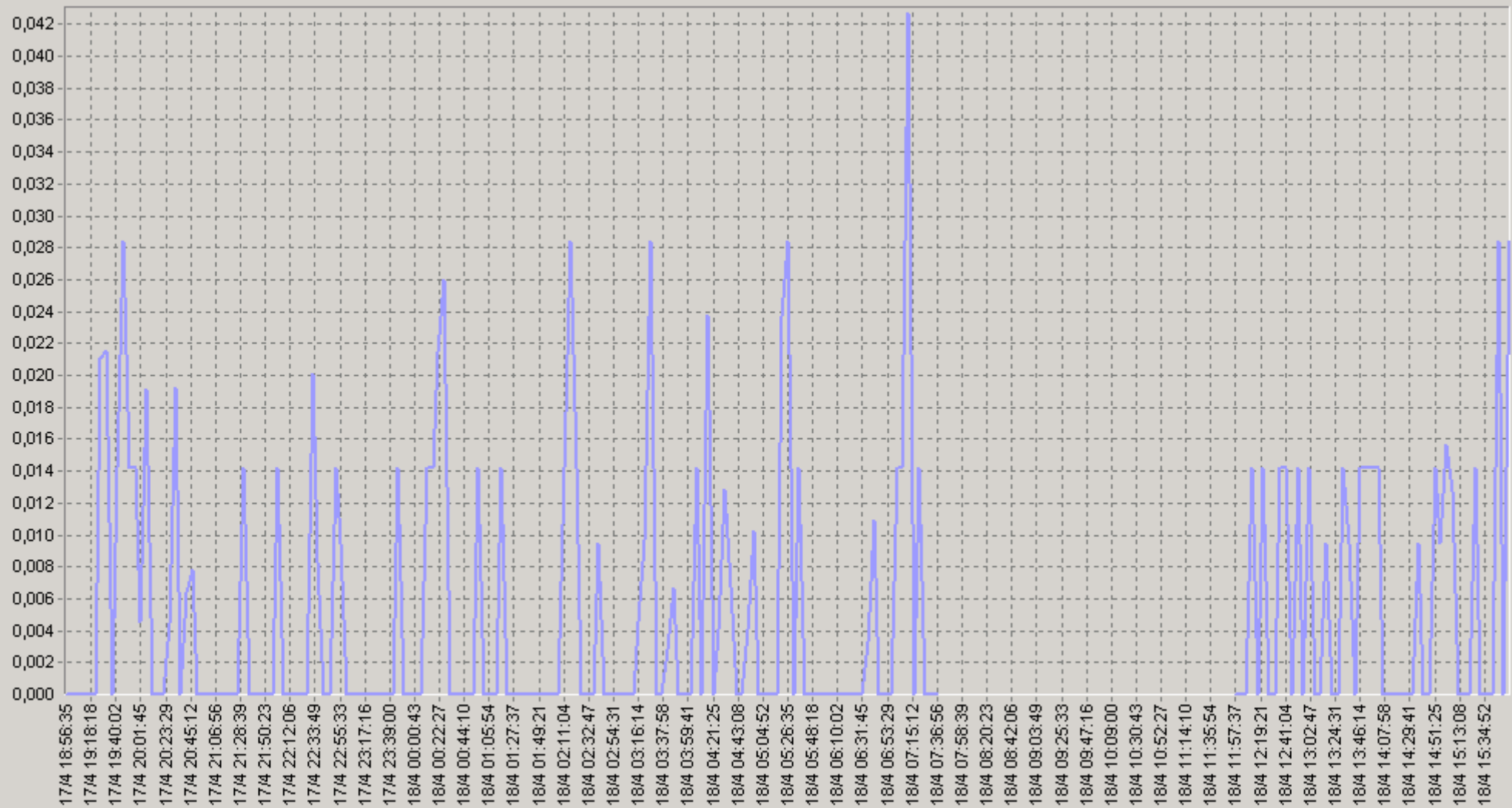
60 VoIP-link calibrating\Worst UDP Packet Loss (%)



◆ [BaseLine Avg] VoIP-link calibrating\Worst UDP Packet Loss (%)(60)(23811:SLA-ON-SERVER3)
 ◆ [BaseLine Percnt75 (<)] VoIP-link calibrating\Worst UDP Packet Loss (%)(60)(23811:SLA-ON-SERVER3)
 ◆ [BaseLine Percnt90 (<)] VoIP-link calibrating\Worst UDP Packet Loss (%)(60)(23811:SLA-ON-SERVER3)

17.04.2008 18:55 - 18.04.2008 17:53

VoIP-link calibrating\Worst UDP Round Trip Delay (ms)



— VoIP-link calibrating\Worst UDP Round Trip Delay (ms)(23811:SLA-ON-SERVER3)

17.04.2008 18:55 - 18.04.2008 17:53

20 VoIP-link calibrating\Worst UDP Round Trip Delay (ms)

		75<	90<			75<	90<
00:00-00:20	0,01	0	0	06:00-06:20	0	0	0
00:20-00:40	0,01	0	0,07	06:20-06:40	0	0	0
00:40-01:00	0	0	0	06:40-07:00	0	0	0
01:00-01:20	0	0	0	07:00-07:20	0,02	0	0,07
01:20-01:40	0	0	0	07:20-07:40	0	0	0
01:40-02:00	0	0	0	07:40-08:00	n/a	n/a	n/a
02:00-02:20	0,01	0	0	08:00-08:20	n/a	n/a	n/a
02:20-02:40	0	0	0	08:20-08:40	n/a	n/a	n/a
02:40-03:00	0	0	0	08:40-09:00	n/a	n/a	n/a
03:00-03:20	0	0	0	09:00-09:20	n/a	n/a	n/a
03:20-03:40	0,01	0	0	09:20-09:40	n/a	n/a	n/a
03:40-04:00	0	0	0	09:40-10:00	n/a	n/a	n/a
04:00-04:20	0,01	0	0,05	10:00-10:20	n/a	n/a	n/a
04:20-04:40	0,01	0	0	10:20-10:40	n/a	n/a	n/a
04:40-05:00	0	0	0	10:40-11:00	n/a	n/a	n/a
05:00-05:20	0	0	0	11:00-11:20	n/a	n/a	n/a
05:20-05:40	0,02	0	0,07	11:20-11:40	n/a	n/a	n/a
05:40-06:00	0	0	0	11:40-12:00	0	0	0

UDP-

17.04.2008 18:55 - 18.04.2008 17:53

20 VoIP-link calibrating\Worst UDP Round Trip Delay (ms)

		75<	90<			75<	90<
12:00-12:20	0	0	0	18:00-18:20	n/a	n/a	n/a
12:20-12:40	0,01	0	0	18:20-18:40	n/a	n/a	n/a
12:40-13:00	0,01	0	0	18:40-19:00	0	0	0
13:00-13:20	0,01	0	0	19:00-19:20	0	0	0
13:20-13:40	0,01	0	0	19:20-19:40	0,01	0	0,07
13:40-14:00	0,01	0	0,07	19:40-20:00	0,02	0	0,07
14:00-14:20	0	0	0	20:00-20:20	0,01	0	0
14:20-14:40	0	0	0	20:20-20:40	0,01	0	0
14:40-15:00	0,01	0	0	20:40-21:00	0	0	0
15:00-15:20	0,01	0	0	21:00-21:20	0	0	0
15:20-15:40	0	0	0	21:20-21:40	0	0	0
15:40-16:00	0,01	0	0,07	21:40-22:00	0	0	0
16:00-16:20	n/a	n/a	n/a	22:00-22:20	0	0	0
16:20-16:40	n/a	n/a	n/a	22:20-22:40	0,01	0	0
16:40-17:00	n/a	n/a	n/a	22:40-23:00	0,01	0	0
17:00-17:20	n/a	n/a	n/a	23:00-23:20	0	0	0
17:20-17:40	n/a	n/a	n/a	23:20-23:40	0	0	0
17:40-18:00	n/a	n/a	n/a	23:40-00:00	0	0	0

17.04.2008 18:55 - 18.04.2008 17:53

6Q VoIP-link calibrating\Worst UDP Round Trip Delay (ms)

